

# Experience a safer and more open world

## Electronic Security Hardware

HES | Securitron

2019 – 2020 Pricelist

US & Canada Effective date December 1, 2019



**ASSA ABLOY**  
Opening Solutions

Experience a safer  
and more open world

# Electronic Security Hardware

HES | Securitron

.....

**2019 – 2020 Pricelist**

# Table of Contents

|  |    |
|--|----|
| <b>Electric Strikes</b>                              |    |
| HES® 1006  | 2  |
| HES 1500   | 4  |
| HES 1600   | 5  |
| HES 4500C  | 6  |
| HES 5000, 5200                                       | 7  |
| HES 7000   | 8  |
| HES 7501   | 8  |
| HES 8000, 8300                                       | 9  |
| HES 8500   | 10 |
| Securiton® UNL, MUNL                                 | 10 |
| HES 9400, 9500, 9600, 9700, 9800                     | 11 |
| HES Folger Adam SB:310-1(X), 310-2                   | 12 |
| HES Folger Adam 310-2 3/4, 310-2 3/4 OB              | 13 |
| HES Folger Adam 310-3-1                              | 13 |
| HES Folger Adam 310-4, 310-4 (S)                     | 14 |
| HES Folger Adam 310-4-X                              | 15 |
| HES Folger Adam 310-6-X                              | 16 |
| HES Folger Adam 310-1-X                              | 18 |
| HES Folger Adam 712, 712-75                          | 19 |
| HES Folger Adam 732, 732-75                          | 19 |
| HES Folger Adam SB710, SB710-75                      | 20 |
| HES Folger Adam SB730, SB730-75                      | 20 |
| HES Folger Adam 742-75                               | 21 |
| HES Folger Adam SB740-75                             | 21 |
| HES Electric Strike Accessories                      | 22 |
| <b>Electromagnetic Locks</b>                         |    |
| <b>Intelligent Magnalocks®</b>                       |    |
| Securiton M380E EcoMag                               | 23 |
| Securiton M680E EcoMag                               | 23 |
| <b>Delayed Egress Magnalocks</b>                     |    |
| Securiton iMXDa                                      | 24 |
| <b>Durable Magnalocks</b>                            |    |
| Securiton M32  | 24 |
| Securiton M62  | 25 |
| Securiton M82  | 25 |
| Securiton M32, M62, M82 Brackets                     | 26 |
| Securiton M32, M62, M82 Accessories                  | 26 |
| Securiton M38  | 27 |
| Securiton M68  | 27 |
| Securiton Universal Magnalock Accessories            | 27 |
| Securiton DM62                                       | 28 |
| <b>Recessed Magnalocks</b>                           |    |
| Securiton M34R                                       | 28 |
| <b>Shear Aligning Magnalocks</b>                     |    |
| Securiton SAM, SAM2                                  | 29 |
| <b>Cabinet Locks</b>                                 |    |
| HES 610  | 30 |
| HES 660  | 30 |
| HES K20  | 30 |
| HES KP20   | 30 |
| HES K100-622H Aperio® Cabinet Lock                   | 31 |
| HES K200 Wiegand Cabinet Lock                        | 31 |
| HES KS200 Wiegand Server Cabinet Lock                | 31 |
| Securiton MCL  | 31 |
| Securiton M32-SS                                     | 31 |
| <b>Specialty Locks</b>                               |    |
| Securiton GL1  | 32 |
| Securiton MM15                                       | 32 |
| Securiton M62FG-SASM                                 | 32 |
| <b>Keypads &amp; Card Readers</b>                    |    |
| <b>Stand Alone Keypads</b>                           |    |
| Securiton DK-12                                      | 33 |
| <b>Keypad Systems</b>                                |    |
| Securiton DK-16                                      | 33 |
| Securiton DK-26                                      | 33 |
| <b>Wiegand Keypads</b>                               |    |
| Securiton DK-37                                      | 33 |
| Securiton DK-38                                      | 33 |
| <b>Aperio Card Reader</b>                            |    |
| Securiton R100H                                      | 33 |
| <b>Push Buttons &amp; Egress Devices</b>             |    |
| Securiton XMS Exit Motion Sensor                     | 34 |
| <b>Emergency Exit Buttons</b>                        |    |
| Securiton EEB  | 34 |
| <b>Push Buttons</b>                                  |    |
| Securiton PB   | 34 |
| Securiton PB2  | 35 |
| Securiton PB3  | 35 |
| Securiton PB4L                                       | 36 |
| Securiton PB5  | 36 |
| Securiton MK Mortise Key Switch                      | 36 |
| Securiton KP-1 Tubular Key Switch                    | 37 |
| Securiton WSS Wave Switch                            | 37 |
| Securiton SP-1 Capacitive Button                     | 37 |
| <b>Egress Bars</b>                                   |    |
| Securiton DSB  | 38 |
| Securiton TSB  | 38 |
| Securiton EMB  | 39 |
| <b>Egress Handles</b>                                |    |
| Securiton TSH  | 39 |
| Securiton EMH  | 39 |
| <b>Power</b>   |    |
| Securiton BPS Linear Power Supplies                  | 40 |
| Securiton AQ Series Power Supplies                   | 41 |
| Securiton AQ Series Distribution Boards              | 41 |
| Securiton AQ Series Power Supply Boards Only         | 41 |
| Securiton EcoPower®                                  | 42 |
| Securiton BPSS Solar Power Supplies                  | 42 |
| Securiton AQE Single-Port PoE                        | 42 |
| Securiton AQE Multi-Port PoE                         | 43 |
| Securiton PSP Plug-In Power Supplies                 | 43 |
| Other Power Products                                 | 43 |
| <b>Power Transfers</b>                               |    |
| Securiton ICPT Inductive Coupling Power Transfer     | 44 |
| Securiton CEPT Concealed Electrical Power Transfers  | 44 |
| Securiton SEPT Square-Cut Electrical Power Transfers | 44 |
| Securiton EPT Electrical Power Transfers             | 45 |
| Securiton EH Electric Hinges                         | 45 |
| Securiton TSB Door Cords                             | 45 |
| <b>Accessories</b>                                   |    |
| Securiton TM-2, TM-9, DT-7 & PZ1 Timers & Alarms     | 46 |
| Securiton BA-DPA Door Prop Alarm Monitoring          | 46 |
| Securiton DPS Door Position Switches                 | 46 |
| Securiton MSS Magnetic Switch/High Security          | 47 |
| Securiton LM Latch Monitoring                        | 47 |
| Securiton RLP, RB-4 Relay Logic Packs & Boards       | 47 |
| <b>Terms &amp; Conditions   Warranty</b>             |    |
| Terms & Conditions, Warranties                       | 48 |

# Electric Strikes

## HES 1006CLB Complete Pacs for Latchbolt Locks

| MODEL          | DESCRIPTION | 630   |
|----------------|-------------|-------|
| 1006CLB        |             | \$617 |
| 1006CLB-F      | Fail Safe   | \$617 |
| 1006CLB-LBM    |             | \$732 |
| 1006CLB-F-LBM  | Fail Safe   | \$732 |
| 1006CLB-LB5M   |             | \$742 |
| 1006CLB-F-LB5M | Fail Safe   | \$742 |



## HES 1006CDB Complete Pacs for Locks with Deadbolts

| MODEL     | DESCRIPTION | 630   |
|-----------|-------------|-------|
| 1006CDB   |             | \$641 |
| 1006CDB-F | Fail Safe   | \$641 |

## HES 1006CAS Complete Pacs for Locks with Deadbolts

| MODEL       | DESCRIPTION | 630   |
|-------------|-------------|-------|
| 1006CAS     |             | \$641 |
| 1006CAS-F   | Fail Safe   | \$641 |
| 1006CAS-2   |             | \$667 |
| 1006CAS-2-F | Fail Safe   | \$667 |

## HES 1006CS Complete Pacs for Latchbolts & Deadbolts

| MODEL    | DESCRIPTION | 630   |
|----------|-------------|-------|
| 1006CS   |             | \$678 |
| 1006CS-F | Fail Safe   | \$678 |

## HES 1006 Electric Strike Bodies

| MODEL       | DESCRIPTION | 630   | 605   | 606   | 612   | 613   | 629   | BLK   |
|-------------|-------------|-------|-------|-------|-------|-------|-------|-------|
| 1006        |             | \$580 | \$670 | \$656 | \$656 | \$628 | \$670 | \$601 |
| 1006-F      | Fail Safe   | \$580 | \$670 | \$656 | \$656 | \$628 | \$670 | \$601 |
| 1006-F-LBM  | Fail Safe   | \$695 | \$785 | \$772 | \$772 | \$743 | \$785 | \$716 |
| 1006-F-LB5M | Fail Safe   | \$705 | \$796 | \$782 | \$782 | \$754 | \$796 | \$727 |
| 1006-LBM    |             | \$695 | \$785 | \$772 | \$772 | \$743 | \$785 | \$716 |
| 1006-LB5M   |             | \$705 | \$796 | \$782 | \$782 | \$754 | \$796 | \$727 |

## Faceplates

| MODEL | DESCRIPTION   | 630  | 605   | 606   | 612   | 613  | 629   | BLK  |
|-------|---|------|-------|-------|-------|------|-------|------|
| LB    | Kit includes J, KM and KD faceplates                                    | \$37 |       |       |       |      |       |      |
| DB    | Kit includes faceplates and brackets to make N and H series options     | \$61 |       |       |       |      |       |      |
| DB2   | Kit includes faceplates and brackets to make N-2 and H-2 series options | \$87 |       |       |       |      |       |      |
| E     |   | \$55 | \$107 | \$95  | \$95  | \$76 | \$95  | \$76 |
| R     |   | \$55 | \$107 | \$95  | \$95  | \$76 | \$95  | \$76 |
| Z     |   | \$37 | \$106 | \$93  | \$93  | \$58 | \$93  | \$58 |
| J-2   |   | \$71 | \$118 | \$103 | \$103 | \$92 | \$103 | \$92 |
| KM-2  |   | \$71 | \$118 | \$103 | \$103 | \$92 | \$103 | \$92 |

### Tier Two Faceplates

| MODEL | 630  | 605   | 606  | 612  | 613  | 629  | BLK  |
|-------|------|-------|------|------|------|------|------|
| HM    | \$55 | \$106 | \$93 | \$93 | \$76 | \$93 | \$76 |
| HTD   | \$55 | \$106 | \$93 | \$93 | \$76 | \$93 | \$76 |
| J     | \$36 | \$105 | \$95 | \$95 | \$57 | \$95 | \$57 |
| KD    | \$36 | \$105 | \$95 | \$95 | \$57 | \$95 | \$57 |
| KM    | \$36 | \$105 | \$95 | \$95 | \$57 | \$95 | \$57 |
| ND    | \$55 | \$106 | \$93 | \$93 | \$76 | \$93 | \$76 |
| NM    | \$55 | \$106 | \$93 | \$93 | \$76 | \$93 | \$76 |

### Accessories

| ITEM     | DESCRIPTION                      | PRICE |
|----------|----------------------------------|-------|
| 157      | Torx screws                      | \$14  |
| 1000-102 | Rain guard                       | \$35  |
| 1000-104 | Lip extension trim adapter (BLK) | \$64  |
| 1000-110 | Replacement strike plate         | \$105 |
| 1000-130 | KD filler plate                  | \$47  |
| 1006-103 | Full keeper shims                | \$12  |
| 1006-105 | Trim enhancer (BLK)              | \$33  |
| 1006-109 | Trim adapter (BLK)               | \$45  |

### How to Order Specify quantity and the following information. Order related products separately.

| SERIES  | MODEL  | FAIL SAFE/SECURE   | FINISH*  | OPTION(S)                            |
|---|--|--|--|--------------------------------------|
| <b>1006</b>   | —  | <b>- F</b>   | <b>- 630</b>   | <b>- LBM</b>                         |
| <b>1006</b> Universal Electric Strike Faceplates ordered separately | <b>CS**</b> Complete Electric Strike; includes the HES SMART Pac® III and J, KD, KM, HM, and AD faceplates | <b>F</b> Fail Safe/Secure<br><b>(blank)</b> Fail Secure (standard) | <b>605</b> Bright Brass<br><b>606</b> Satin Brass<br><b>612</b> Satin Bronze<br><b>613</b> Bronze Toned<br><b>629</b> Bright Stainless Steel<br><b>630</b> Satin Stainless Steel<br><b>BLK</b> Black | <b>LBM</b> Latchbolt Monitor         |
|   | <b>CLB</b> Complete Electric Strike for latchbolt locks; includes the J, K, KD, and KM faceplates          |  |  | <b>LBSM</b> Latchbolt Strike Monitor |
|   | <b>CDB**</b> Complete Electric Strike for Deadbolt Locks; includes the HM and AD faceplates                |  |  |                                      |
|   | <b>CAS</b> Complete Electric Strike for Deadbolt Locks; includes the ND and NM faceplates                  |  |  |                                      |

*\*Complete Pacs are only available in the 630 finish. \*\*Complete Pacs with deadbolts are not available with monitoring options.*

## HES 1500C Complete Pacs for Latchbolt Locks

| MODEL             | DESCRIPTION                          | 630   | 605   | 606   | 612   | 613E  | 629   | BSP   |
|-------------------|--------------------------------------|-------|-------|-------|-------|-------|-------|-------|
| <b>1500C</b>      |                                      | \$555 | \$655 | \$640 | \$640 | \$612 | \$645 | \$612 |
| <b>1500C-LM</b>   | Lock monitors                        | \$660 | \$760 | \$745 | \$745 | \$717 | \$750 | \$717 |
| <b>1500C-DLM</b>  | Dual lock monitors                   | \$765 | \$865 | \$850 | \$850 | \$822 | \$855 | \$822 |
| <b>1500C-LMS</b>  | Lock monitors & strike monitors      | \$670 | \$770 | \$755 | \$755 | \$727 | \$760 | \$727 |
| <b>1500C-DLMS</b> | Dual lock monitors & strike monitors | \$775 | \$875 | \$860 | \$860 | \$832 | \$865 | \$832 |



## HES 1500 Electric Strike Bodies

| MODEL            | DESCRIPTION                         | 630   | 605   | 606   | 612   | 613E  | 629   | BSP   |
|------------------|-------------------------------------|-------|-------|-------|-------|-------|-------|-------|
| <b>1500</b>      |                                     | \$514 | \$590 | \$580 | \$580 | \$546 | \$590 | \$546 |
| <b>1500-LM</b>   | Lock monitor                        | \$619 | \$695 | \$685 | \$685 | \$651 | \$695 | \$651 |
| <b>1500-DLM</b>  | Dual lock monitors                  | \$724 | \$800 | \$790 | \$790 | \$756 | \$800 | \$756 |
| <b>1500-LMS</b>  | Lock monitor & strike monitor       | \$629 | \$705 | \$695 | \$695 | \$661 | \$705 | \$661 |
| <b>1500-DLMS</b> | Dual lock monitors & strike monitor | \$734 | \$810 | \$800 | \$800 | \$766 | \$810 | \$766 |

## Faceplates

| MODEL        | DESCRIPTION                                 | 630  | 605   | 606   | 612   | 613E | 629   | BSP  |
|--------------|---|------|-------|-------|-------|------|-------|------|
| <b>1LB</b>   | Kit includes 1J, 1K, 1KD and 1KM faceplates | \$42 | \$90  | \$83  | \$83  | \$68 | \$83  | \$68 |
| <b>1LB-2</b> | Kit includes 1J-2 & 1KM-2 faceplates        | \$70 | \$117 | \$111 | \$111 | \$96 | \$111 | \$96 |

## Accessories

| ITEM            | DESCRIPTION                               | PRICE |
|-----------------|---|-------|
| <b>157</b>      | Torx screws                               | \$14  |
| <b>OPT-1SRK</b> | Optional spring replacement kit           | \$47  |
| <b>OPT-1LM</b>  | Optional kit includes single lock monitor | \$108 |
| <b>OPT-1DLM</b> | Optional kit includes dual lock monitors  | \$216 |
| <b>MOD-1SOL</b> | Solenoid replacement module               | \$295 |

| MODEL           | DESCRIPTION  | 630  | 605  | 606  | 612  | 613E | 629  | BSP  |
|-----------------|--|------|------|------|------|------|------|------|
| <b>1500-104</b> | Lip extension trim adapter (finish to match)               | \$39 | \$84 | \$78 | \$78 | \$63 | \$78 | \$63 |
| <b>1500-106</b> | 4500 filler plates and trim enhancer kit (finish to match) | \$32 | \$77 | \$71 | \$71 | \$56 | \$71 | \$56 |

## How to Order Specify quantity and the following information. Order related products separately.

| SERIES   | MODEL  | FINISH  | OPTION(S)*  |
|--|--|---|---|
| <b>1500</b>  | —  | <b>– 630</b>  | <b>– LM</b>   |
| <b>1500</b> Universal Electric Strike faceplate option kits ordered separately | <b>C</b> Complete Electric Strike; includes 1LB faceplate kit for latchbolts | <b>605</b> Bright Brass<br><b>606</b> Satin Brass<br><b>612</b> Satin Bronze<br><b>613E</b> Dark Oxidized Satin Bronze Powder<br><b>629</b> Bright Stainless Steel<br><b>630</b> Satin Stainless Steel<br><b>BSP</b> Black Suede Powder | <b>LM</b> Lock Monitor<br><b>DLM</b> Dual Lock Monitor<br><b>LMS</b> Lock Monitor and Strike Monitor<br><b>DLMS</b> Dual Lock Monitors and Strike Monitor |

\*LMS/DLMS factory installed only option.

## HES 1600CLB Complete Pacs for Latchbolt Locks

| MODEL                | DESCRIPTION                         | 630   | 605   | 606   | 612   | 613E  | 629   | BSP   |
|----------------------|-------------------------------------|-------|-------|-------|-------|-------|-------|-------|
| <b>1600-CLB</b>      |                                     | \$555 | \$655 | \$640 | \$640 | \$612 | \$645 | \$612 |
| <b>1600-CLB-LM</b>   | Lock monitor                        | \$660 | \$760 | \$745 | \$745 | \$717 | \$750 | \$717 |
| <b>1600-CLB-DLM</b>  | Dual lock monitor                   | \$765 | \$865 | \$850 | \$850 | \$822 | \$855 | \$822 |
| <b>1600-CLB-LMS</b>  | Lock monitor & strike monitor       | \$670 | \$770 | \$755 | \$755 | \$727 | \$760 | \$727 |
| <b>1600-CLB-DLMS</b> | Dual lock monitors & strike monitor | \$775 | \$875 | \$860 | \$860 | \$832 | \$865 | \$832 |

## HES 1600CDB Complete Pacs for Locks with Deadbolts

| MODEL                | DESCRIPTION                         | 630   | 605   | 606   | 612   | 613E  | 629   | BSP   |
|----------------------|-------------------------------------|-------|-------|-------|-------|-------|-------|-------|
| <b>1600-CDB</b>      |                                     | \$555 | \$655 | \$640 | \$640 | \$612 | \$645 | \$612 |
| <b>1600-CDB-LM</b>   | Lock monitor                        | \$660 | \$760 | \$745 | \$745 | \$717 | \$750 | \$717 |
| <b>1600-CDB-DLM</b>  | Dual lock monitors                  | \$765 | \$865 | \$850 | \$850 | \$822 | \$855 | \$822 |
| <b>1600-CDB-LMS</b>  | Lock monitor & strike monitor       | \$670 | \$770 | \$755 | \$755 | \$727 | \$760 | \$727 |
| <b>1600-CDB-DLMS</b> | Dual lock monitors & strike monitor | \$775 | \$875 | \$860 | \$860 | \$832 | \$865 | \$832 |

## HES 1600CS Complete Pacs for Latchbolt Locks & Deadlocks

| MODEL               | DESCRIPTION                         | 630   | 605   | 606    | 612    | 613E  | 629    | BSP   |
|---------------------|-------------------------------------|-------|-------|--------|--------|-------|--------|-------|
| <b>1600-CS</b>      |                                     | \$615 | \$771 | \$798  | \$798  | \$663 | \$781  | \$663 |
| <b>1600-CS-LM</b>   | Lock monitor                        | \$720 | \$876 | \$903  | \$903  | \$768 | \$886  | \$768 |
| <b>1600-CS-DLM</b>  | Dual lock monitors                  | \$825 | \$981 | \$1008 | \$1008 | \$873 | \$991  | \$873 |
| <b>1600-CS-LMS</b>  | Lock monitor & strike monitor       | \$730 | \$886 | \$913  | \$913  | \$778 | \$896  | \$778 |
| <b>1600-CS-DLMS</b> | Dual lock monitors & strike monitor | \$835 | \$991 | \$1018 | \$1018 | \$883 | \$1001 | \$883 |

## HES 1600 Electric Strike Bodies

| MODEL            | DESCRIPTION                         | 630   | 605   | 606   | 612   | 613E  | 629   | BSP   |
|------------------|-------------------------------------|-------|-------|-------|-------|-------|-------|-------|
| <b>1600</b>      |                                     | \$514 | \$590 | \$580 | \$580 | \$546 | \$590 | \$546 |
| <b>1600-LM</b>   | Lock monitor                        | \$619 | \$695 | \$685 | \$685 | \$651 | \$695 | \$651 |
| <b>1600-DLM</b>  | Dual lock monitors                  | \$724 | \$800 | \$790 | \$790 | \$756 | \$800 | \$756 |
| <b>1600-LMS</b>  | Lock monitor & strike monitor       | \$629 | \$705 | \$695 | \$695 | \$661 | \$705 | \$661 |
| <b>1600-DLMS</b> | Dual lock monitors & strike monitor | \$734 | \$810 | \$800 | \$800 | \$766 | \$810 | \$766 |

## Faceplates

| MODEL        | DESCRIPTION   | 630  | 605   | 606   | 612   | 613E | 629   | BSP  |
|--------------|---|------|-------|-------|-------|------|-------|------|
| <b>1LB</b>   | Kit includes 1J, 1K, 1KD and 1KM faceplates                               | \$42 | \$90  | \$83  | \$83  | \$68 | \$83  | \$68 |
| <b>1LB-2</b> | Kit includes 1J-2 & 1KM-2 faceplates                                      | \$70 | \$117 | \$111 | \$111 | \$96 | \$111 | \$96 |
| <b>1DB</b>   | Kit includes faceplates and brackets to make 1N, 1ND, 1NM or 1NTD options | \$42 | \$90  | \$83  | \$83  | \$68 | \$83  | \$68 |
| <b>1DB-2</b> | Kit includes faceplates and brackets to make 1N-2 option                  | \$70 | \$117 | \$111 | \$111 | \$96 | \$111 | \$96 |

## Accessories

| ITEM            | DESCRIPTION                               | PRICE |
|-----------------|---|-------|
| <b>157</b>      | Torx screws                               | \$14  |
| <b>OPT-1SRK</b> | Optional spring replacement kit           | \$47  |
| <b>OPT-1LM</b>  | Optional kit includes single lock monitor | \$108 |
| <b>OPT-1DLM</b> | Optional kit includes dual lock monitors  | \$216 |
| <b>MOD-1SOL</b> | Solenoid replacement module               | \$295 |

| MODEL           | DESCRIPTION   | 630  | 605  | 606  | 612  | 613E | 629  | BSP  |
|-----------------|---|------|------|------|------|------|------|------|
| <b>1600-104</b> | Lip extension trim adapter (finish to match)              | \$40 | \$84 | \$78 | \$78 | \$63 | \$78 | \$63 |
| <b>1600-106</b> | 1006 filler plate and trim enhancer kit (finish to match) | \$33 | \$77 | \$71 | \$71 | \$56 | \$71 | \$56 |

## How to Order Specify quantity and the following information. Order related products separately.

| SERIES   | MODEL   | FINISH  | OPTION(S)*  |
|--|---|---|---|
| <b>1600</b>  | <b>– CS</b>   | <b>– 630</b>                                  | <b>– LM</b>                                       |
| 1600 Universal Electric Strike; Faceplate option kits ordered separately | <b>CS</b> Complete Electric Strike; includes 1LB faceplate kit for latchbolts and 1DB faceplate kit for deadbolts | <b>605</b> Bright Brass                       | <b>LM</b> Lock Monitor                            |
|  | <b>CLB</b> Complete Electric Strike for Latchbolt Locks; includes 1LB faceplate kit for latchbolts                | <b>606</b> Satin Brass                        | <b>DLM</b> Dual Lock Monitor                      |
|  | <b>CDB</b> Complete Electric Strike for Deadbolt Locks; includes 1DB faceplate kit for deadbolts                  | <b>612</b> Satin Bronze                       | <b>LMS</b> Lock Monitor and Strike Monitor        |
|  |   | <b>613E</b> Dark Oxidized Satin Bronze Powder | <b>DLMS</b> Dual Lock Monitors and Strike Monitor |
|  |   | <b>629</b> Bright Stainless Steel             |   |
|  |   | <b>630</b> Satin Stainless Steel              |   |
|  | <b>BSP</b> Black Suede Powder   |   |   |

\*LMS/DLMS factory installed only option.



## HES 4500C Complete Pacs for Latchbolt Locks

| MODEL             | DESCRIPTION              | 630   | 605   | 606   | 612   | 613   | 629   |
|-------------------|--------------------------|-------|-------|-------|-------|-------|-------|
| <b>4500C</b>      |                          | \$627 | \$717 | \$704 | \$704 | \$670 | \$717 |
| <b>4500C-LBM</b>  | Latchbolt monitor        | \$742 | \$833 | \$819 | \$819 | \$785 | \$833 |
| <b>4500C-LBSM</b> | Latchbolt strike monitor | \$753 | \$843 | \$830 | \$830 | \$796 | \$843 |



### Accessories

| ITEM            | DESCRIPTION                  | PRICE |
|-----------------|------------------------------|-------|
| <b>157</b>      | Torx screws                  | \$14  |
| <b>4500-105</b> | Trim enhancer (BLK)          | \$33  |
| <b>4500-110</b> | Replacement strike plate     | \$100 |
| <b>4500-131</b> | Filler block                 | \$42  |
| <b>4501-1/2</b> | 1/2" stackable lip extension | \$56  |
| <b>4501-1</b>   | 1" stackable lip extension   | \$63  |

### How to Order *Specify quantity and the following information. Order related products separately.*

| SERIES   | FINISH*                           | OPTION(S)                            |
|--|-----------------------------------|--------------------------------------|
| <b>4500C</b>   | <b>- 630</b>                      | <b>- LBM</b>                         |
| <b>4500C</b> Complete Electric Strike; includes faceplates for cylindrical and mortise locks | <b>605</b> Bright Brass           | <b>LBM</b> Latchbolt Monitor         |
|  | <b>606</b> Satin Brass            | <b>LBSM</b> Latchbolt Strike Monitor |
|  | <b>612</b> Satin Bronze           |                                      |
|  | <b>613</b> Bronze Toned           |                                      |
|  | <b>629</b> Bright Stainless Steel |                                      |
|  | <b>630</b> Satin Stainless Steel  |                                      |



## HES 5000C, 52000C Complete Pacs for Latchbolt Locks

| MODEL             | DESCRIPTION              | 630   |
|-------------------|--------------------------|-------|
| <b>5000C</b>      |                          | \$208 |
| <b>5000C-LBM</b>  | Latchbolt monitor        | \$286 |
| <b>5200C</b>      |                          | \$213 |
| <b>5200C-LBM</b>  | Latchbolt monitor        | \$292 |
| <b>5200C-LBSM</b> | Latchbolt strike monitor | \$302 |



## HES 5000, 52000 Electric Strike Bodies

| MODEL            | DESCRIPTION              | 630   |
|------------------|--------------------------|-------|
| <b>5000</b>      |                          | \$183 |
| <b>5000-LBM</b>  | Latchbolt monitor        | \$261 |
| <b>5200</b>      |                          | \$188 |
| <b>5200-LBM</b>  | Latchbolt monitor        | \$266 |
| <b>5200-LBSM</b> | Latchbolt strike monitor | \$277 |

## Faceplates

| MODEL       | DESCRIPTION   | 630  | 605  | 606  | 612  | 613  | 629  | BLK  |
|-------------|---|------|------|------|------|------|------|------|
| <b>501</b>  | For use with cylindrical locksets in NSI metal jambs  | \$20 | \$68 | \$50 | \$50 | \$42 | \$68 | \$42 |
| <b>501A</b> | For use with cylindrical locksets or spring latches in aluminum frames. Includes universal mounting tabs. | \$25 | \$74 | \$53 | \$53 | \$46 | \$74 | \$46 |
| <b>502</b>  | For use with cylindrical locksets or spring latches in aluminum frames. Includes universal mounting tabs  | \$44 | \$89 | \$73 | \$73 | \$60 | \$89 | \$60 |
| <b>503</b>  | For use with cylindrical locksets or spring latches in aluminum frames. Includes universal mounting tabs  | \$44 | \$89 | \$73 | \$73 | \$60 | \$89 | \$60 |
| <b>504</b>  | For use with cylindrical locksets. Four-point mounting for wood installations.                            | \$44 | \$89 | \$73 | \$73 | \$60 | \$89 | \$60 |

## Accessories

| ITEM              | DESCRIPTION                    | PRICE |
|-------------------|--------------------------------|-------|
| <b>157</b>        | Torx screws                    | \$14  |
| <b>5000-105</b>   | Trim enhancer (goof plate)     | \$32  |
| <b>5104-1/2</b>   | 1/2" stackable lip extension   | \$54  |
| <b>5104-1</b>     | 1" stackable lip extension     | \$61  |
| <b>5104-1-1/4</b> | 1-1/4" stackable lip extension | \$63  |
| <b>5200 105</b>   | Trim enhancer (goof plate)     | \$32  |
| <b>5200-500</b>   | Filler block                   | \$57  |
| <b>5204-1/2</b>   | 1/2" stackable lip extension   | \$54  |
| <b>5204-1</b>     | 1" stackable lip extension     | \$61  |
| <b>5204-1-1/4</b> | 1-1/4" stackable lip extension | \$63  |

## How to Order Specify quantity and the following information. Order related products separately.

| SERIES            | MODEL  | FINISH  | OPTION(S)*   |
|-------------------|--|---|--|
| <b>5000, 5200</b> | —  | — <b>630</b>  | — <b>LM</b>  |
| <b>5000, 5200</b> | <b>C*</b> Complete Electric Strike; includes the 501 and 501A faceplates | <b>605</b> Bright Brass<br><b>606</b> Satin Brass<br><b>612</b> Satin Bronze<br><b>613</b> Bronze Powder<br><b>629</b> Bright Stainless Steel<br><b>630</b> Satin Stainless Steel<br><b>BLK</b> Black | <b>LBM</b> Latchbolt Monitor<br><b>LBSM**</b> Latchbolt Strike Monitor |

\*Complete Pacs are only available in the 630 finish. \*\*LBSM only available with 5200.

## HES 7000C Complete Pacs for Latchbolt Locks

| MODEL            | DESCRIPTION       | 630   |
|------------------|-------------------|-------|
| <b>7000C</b>     |                   | \$324 |
| <b>7000C-LBM</b> | Latchbolt monitor | \$442 |



## HES 7000 Electric Strike Bodies

| MODEL           | DESCRIPTION       | 630   |
|-----------------|-------------------|-------|
| <b>7000</b>     |                   | \$263 |
| <b>7000-LBM</b> | Latchbolt monitor | \$381 |

## Faceplates

| MODEL       | DESCRIPTION                | 630   | 605   | 606  | 612  | 613E  | 629   | BLK  |
|-------------|----------------------------|-------|-------|------|------|-------|-------|------|
| <b>791</b>  | Cylindrical lock faceplate | \$61  | \$109 | \$93 | \$93 | \$80  | \$109 | \$80 |
| <b>792</b>  | Cylindrical lock faceplate | \$61  | \$109 | \$93 | \$93 | \$80  | \$109 | \$80 |
| <b>783S</b> | Rim exit device faceplate  | \$157 |       |      |      | \$224 |       |      |
| <b>786S</b> | Rim exit device faceplate  | \$175 |       |      |      | \$254 |       |      |
| <b>789S</b> | Rim exit device faceplate  | \$175 |       |      |      | \$254 |       |      |

## Accessories

| ITEM            | DESCRIPTION   | PRICE |
|-----------------|---|-------|
| <b>157</b>      | Torx screws   | \$14  |
| <b>7000-104</b> | Lip extension trim adapter (791 & 792 options only)   | \$32  |
| <b>7000-105</b> | Trim enhancer (goof plate) (791 & 792 options only)   | \$32  |
| <b>7000-106</b> | Keeper pocket adapter (783S & 789S options only)      | \$31  |
| <b>7000-107</b> | Full keeper shim pack                                 | \$17  |
| <b>7000-108</b> | Spacer plate (783S & 789S options, black finish only) | \$34  |
| <b>7000-110</b> | Replacement strike plate (701 option only)            | \$106 |
| <b>SMB</b>      | Surface mounting box                                  | \$215 |

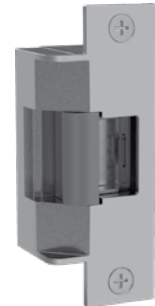
## How to Order Specify quantity and the following information. Order related products separately.

| SERIES   | MODEL  | FINISH*  | OPTION(S)   |
|--|--|--|---|
| <b>7000</b>  | —  | — 630  | — LBM   |
|  |  | <b>791 and 792 Options</b>   | <b>783S, 786S, 789S Options</b>   |
| <b>7000</b> Universal Electric Strike; faceplates ordered separately | <b>C*</b> Complete Electric Strike; includes the 791 and 792 faceplates<br><br><b>(blank)</b> Strike Body Only | <b>605</b> Bright Brass<br><b>606</b> Satin Brass<br><b>612</b> Satin Bronze<br><b>613E</b> Dark Oxidized Satin Bronze Powder<br><b>629</b> Bright Stainless Steel<br><b>630</b> Satin Stainless Steel<br><b>BLK</b> Black | <b>613E</b> Dark Oxidized Satin Bronze Powder<br><b>630</b> Satin Stainless Steel<br><br><b>LBM</b> Latchbolt Monitor |

\*Complete Pacs are only available in 630 finish.

## HES 7501 Complete Electric Strike Kits

| MODEL           | DESCRIPTION       | 630   | 605   | 606   | 612   | 613   | 629   |
|-----------------|-------------------|-------|-------|-------|-------|-------|-------|
| <b>7501</b>     |                   | \$624 | \$713 | \$699 | \$699 | \$683 | \$713 |
| <b>7501-LBM</b> | Latchbolt monitor | \$737 | \$826 | \$813 | \$813 | \$796 | \$826 |



## How to Order Specify quantity and the following information. Order related products separately.

| SERIES   | FINISH*  | OPTION(S)                    |
|--|--|------------------------------|
| <b>7501</b>  | — 630  | — LBM                        |
| <b>7501</b> Universal Electric Strike; includes faceplate for cylindrical locksets | <b>605</b> Bright Brass<br><b>606</b> Satin Brass<br><b>612</b> Satin Bronze<br><b>613</b> Bronze Toned<br><b>629</b> Bright Stainless Steel<br><b>630</b> Satin Stainless Steel | <b>LBM</b> Latchbolt Monitor |

### HES 8000C, 8300C Complete Pac for Latchbolt Locks

| MODEL            | DESCRIPTION       | 630   |
|------------------|-------------------|-------|
| <b>8000C</b>     |                   | \$248 |
| <b>8000C-LBM</b> | Latchbolt monitor | \$362 |
| <b>8300C</b>     |                   | \$559 |
| <b>8300C-LBM</b> | Latchbolt monitor | \$674 |



### HES 8000, 8300 Electric Strike Bodies

| MODEL           | DESCRIPTION       | 630   |
|-----------------|-------------------|-------|
| <b>8000</b>     |                   | \$217 |
| <b>8000-LBM</b> | Latchbolt monitor | \$331 |
| <b>8300</b>     |                   | \$528 |
| <b>8300-LBM</b> | Latchbolt monitor | \$643 |

### Faceplates

| MODEL       | 630  | 605  | 606  | 612  | 613  | 629  | BLK  |
|-------------|------|------|------|------|------|------|------|
| <b>801</b>  | \$31 | \$80 | \$64 | \$64 | \$52 | \$80 | \$52 |
| <b>801A</b> | \$36 | \$85 | \$69 | \$69 | \$57 | \$85 | \$57 |
| <b>801E</b> | \$31 | \$80 | \$64 | \$64 | \$52 | \$80 | \$52 |
| <b>802</b>  | \$49 | \$99 | \$82 | \$82 | \$70 | \$99 | \$78 |
| <b>803</b>  | \$49 | \$99 | \$82 | \$82 | \$70 | \$99 | \$70 |
| <b>805</b>  | \$49 | \$99 | \$82 | \$82 | \$70 | \$99 | \$70 |

### How to Order Specify quantity and the following information. Order related products separately.

| SERIES            | MODEL  | FINISH*  | OPTION(S)                    |
|-------------------|--|--|------------------------------|
| <b>8000</b>       | —  | <b>– 630</b>   | <b>– LBM</b>                 |
| <b>8000, 8300</b> | Universal Electric Strike; faceplates ordered separately<br><br><b>C</b> Complete Electric Strike; includes the 801 and 801A faceplates<br><br><b>(blank)</b> Strike Body Only | <b>605</b> Bright Brass<br><b>606</b> Satin Brass<br><b>612</b> Satin Bronze<br><b>613</b> Bronze Toned<br><b>629</b> Bright Stainless Steel<br><b>630</b> Satin Stainless Steel<br><b>BLK</b> Black | <b>LBM</b> Latchbolt Monitor |

\*Complete Pacs are only available in 630 finish.

## HES 8500 Electric Strike Bodies

| MODEL            | DESCRIPTION              | 630   | 605   | 606   | 612   | 613   | 629   |
|------------------|--------------------------|-------|-------|-------|-------|-------|-------|
| <b>8500</b>      |                          | \$528 | \$588 | \$578 | \$578 | \$578 | \$588 |
| <b>8500-LBM</b>  | Latchbolt monitor        | \$643 | \$703 | \$693 | \$693 | \$693 | \$703 |
| <b>8500-LBSM</b> | Latchbolt strike monitor | \$653 | \$714 | \$703 | \$703 | \$703 | \$714 |



## Faceplates

| MODEL       | 630  | 605  | 606  | 612  | 613  | 629  |
|-------------|------|------|------|------|------|------|
| <b>851M</b> | \$40 | \$90 | \$73 | \$73 | \$63 | \$90 |
| <b>852K</b> | \$40 | \$90 | \$73 | \$73 | \$63 | \$90 |
| <b>852L</b> | \$40 | \$90 | \$73 | \$73 | \$63 | \$90 |
| <b>852M</b> | \$40 | \$90 | \$73 | \$73 | \$63 | \$90 |

## How to Order Specify quantity and the following information. Order related products separately.

| SERIES   | MODEL   | FINISH*  | OPTION(S)  |
|--|---|--|--|
| <b>8500</b>  | —   | – 630  | – LBM  |
| <b>8500</b> Universal Electric Strike; faceplates ordered separately | <b>C</b> Complete Electric Strike; includes the 801 and 801A faceplates | <b>605</b> Bright Brass<br><b>606</b> Satin Brass<br><b>612</b> Satin Bronze<br><b>613</b> Bronze Toned<br><b>629</b> Bright Stainless Steel<br><b>630</b> Satin Stainless Steel | <b>LBM</b> Latchbolt Monitor<br><b>LBSM</b> Latchbolt Strike Monitor |

\*Complete Pacs are only available in 630 finish.

## Securitron UNL, MUNL Complete Pacs for Latchbolt Locks

| MODEL          | 626   | 613   |
|----------------|-------|-------|
| <b>UNL-12</b>  | \$499 | \$556 |
| <b>UNL-24</b>  | \$497 | \$556 |
| <b>MUNL-12</b> | \$695 | \$747 |
| <b>MUNL-24</b> | \$695 | \$747 |



## Accessories

| ITEM            | DESCRIPTION                                  | PRICE |
|-----------------|--|-------|
| <b>FSUNL-12</b> | Fail Safe/Fail Secure UnLatch Module, 12 VDC | \$123 |
| <b>FSUNL-24</b> | Fail Safe/Fail Secure UnLatch Module, 24 VDC | \$123 |

## How to Order Specify quantity and the following information. Order related products separately.

| SERIES                 | FAIL SAFE/SECURE   | VOLTAGE           | FINISH   |
|------------------------|--|-------------------|--|
| <b>MUNL</b>            | —  | – 24              | – 10B  |
| <b>UNL</b> Cylindrical | <b>(blank)</b> Fail Secure (Standard)  | <b>12</b> 12 Volt | <b>(blank)</b> US26D/626—Stainless Steel                                   |
| <b>MUNL</b> Mortise    | Note: <b>FSUNL</b> for field-selectable fail safe operation ordered separately | <b>24</b> 24 Volt | <b>10B</b> US10B/613—Oil Rubbed Bronze<br><b>US3</b> US03/605—Bright Brass |

## HES 9400, 9500, 9600, 9700, 9800 Surface Mounted Electric Strikes for Rim Exit Devices

| MODEL            | DESCRIPTION              | 630   | 605   | 606   | 612   | 613   | 613E  | 628E  | 629   | BSP   |
|------------------|--------------------------|-------|-------|-------|-------|-------|-------|-------|-------|-------|
| <b>9400</b>      |                          | \$526 | \$612 | \$599 | \$599 | \$599 | \$558 |       | \$612 |       |
| <b>9400-LBM</b>  | Latchbolt monitor        | \$636 | \$722 | \$709 | \$709 | \$709 | \$668 |       | \$722 |       |
| <b>9400-LBSM</b> | Latchbolt strike monitor | \$646 | \$732 | \$719 | \$719 | \$719 | \$678 |       | \$732 |       |
| <b>9500</b>      |                          | \$625 | \$711 | \$698 | \$698 | \$698 | \$657 |       | \$711 |       |
| <b>9500-LBM</b>  | Latchbolt monitor        | \$735 | \$821 | \$808 | \$808 | \$808 | \$767 |       | \$821 |       |
| <b>9500-LBSM</b> | Latchbolt strike monitor | \$745 | \$831 | \$818 | \$818 | \$818 | \$777 |       | \$831 |       |
| <b>9600</b>      |                          | \$526 | \$612 | \$599 | \$599 | \$599 | \$558 |       | \$612 |       |
| <b>9600-LBM</b>  | Latchbolt monitor        | \$636 | \$722 | \$709 | \$709 | \$709 | \$668 |       | \$722 |       |
| <b>9600-LBSM</b> | Latchbolt strike monitor | \$646 | \$732 | \$719 | \$719 | \$719 | \$678 |       | \$732 |       |
| <b>9700</b>      |                          | \$625 | \$711 | \$698 | \$698 | \$698 | \$657 |       | \$711 |       |
| <b>9700-LBM</b>  | Latchbolt monitor        | \$735 | \$821 | \$808 | \$808 | \$808 | \$767 |       | \$821 |       |
| <b>9700-LBSM</b> | Latchbolt strike monitor | \$745 | \$831 | \$818 | \$818 | \$818 | \$777 |       | \$831 |       |
| <b>9800</b>      |                          | \$625 | \$711 | \$698 |       |       | \$657 | \$657 | \$711 | \$657 |
| <b>9800-LBM</b>  | Coming soon              |       |       |       |       |       |       |       |       |       |
| <b>9800-LBSM</b> | Coming soon              |       |       |       |       |       |       |       |       |       |



### Accessories

| ITEM            | DESCRIPTION                     | PRICE |
|-----------------|---------------------------------|-------|
| <b>9000-MTK</b> | Metal template installation kit | \$79  |
| <b>SMB</b>      | Surface mounting box            | \$215 |

### Spacer Plates/ Brackets

| MODEL           | DESCRIPTION             | 630  | 613E  | 628E | BSP   |
|-----------------|-------------------------|------|-------|------|-------|
| <b>9000-108</b> | 1/8" Spacer plate       | \$33 | \$46  | \$45 | \$46  |
| <b>9000-116</b> | 1/16" Spacer plate      | \$33 | \$46  | \$45 | \$46  |
| <b>9000-ASB</b> | Aluminum Spacer Bracket |      | \$108 | \$99 | \$108 |

### How to Order Specify quantity and the following information. Order related products separately.

| SERIES   | FINISH  | OPTION(S)  |
|--|---|--|
| 9600   | - 630   | - LBM  |
| <b>9400</b> Surface Mounted Electric Strike for 1/2" Pullman Exit Device; no faceplates required   | <b>605</b> Bright Brass<br><b>606</b> Satin Brass                           | <b>LBM</b> Latchbolt Monitor<br><b>LBSM</b> Latchbolt Strike Monitor |
| <b>9500</b> Surface Mounted Electric Strike for 3/4" Pullman, fire rated; no faceplates required   | <b>612</b> Satin Bronze<br><b>613</b> Bronze Toned                          |  |
| <b>9600</b> Surface Mounted Electric Strike for 3/4" Pullman Rim Exit Devices, non-fire rated; no faceplates required                    | <b>613E</b> Dark Oxidized Satin Bronze<br><b>629</b> Bright Stainless Steel |  |
| <b>9700</b> Surface Mounted Electric Strike for Corbin Russwin SecureBolt® and Yale SquareBolt® Rim Exit Devices; no faceplates required | <b>628E</b> Satin Aluminum Powder<br><b>630</b> Satin Stainless Steel       |  |
| <b>9800</b> Surface Mounted Electric Strike for Adams Rite® Starwheel and Interlocking Rim Exit Devices; no faceplates required          | <b>BSP</b> Black Suede Powder   |  |

### HES Folger Adam SB:310-1(1/2)

#### Electric Strike Bodies

| ITEM                   | DESCRIPTION | PRICE |
|------------------------|-------------|-------|
| 310-1(1/2)-12D         |             | \$555 |
| 310-1(1/2)-24D         |             | \$555 |
| 310-1(1/2)-F-12D       | Fail safe   | \$555 |
| 310-1(1/2)-F-24D       | Fail safe   | \$555 |
| 310-1(1/2)-12D-LCBMA   |             | \$696 |
| 310-1(1/2)-24D-LCBMA   |             | \$696 |
| 310-1(1/2)-F-12D-LCBMA | Fail safe   | \$696 |
| 310-1(1/2)-F-24D-LCBMA | Fail safe   | \$696 |



### HES Folger Adam SB:310-1(3/4)

#### Electric Strike Bodies

| ITEM                   | DESCRIPTION | PRICE |
|------------------------|-------------|-------|
| 310-1(3/4)-12D         |             | \$555 |
| 310-1(3/4)-24D         |             | \$555 |
| 310-1(3/4)-F-12D       | Fail safe   | \$555 |
| 310-1(3/4)-F-24D       | Fail safe   | \$555 |
| 310-1(3/4)-12D-LCBMA   |             | \$696 |
| 310-1(3/4)-24D-LCBMA   |             | \$696 |
| 310-1(3/4)-F-12D-LCBMA | Fail safe   | \$696 |
| 310-1(3/4)-F-24D-LCBMA | Fail safe   | \$696 |

### HES Folger Adam SB:310-1(1)

#### Electric Strike Bodies

| ITEM                 | DESCRIPTION | PRICE |
|----------------------|-------------|-------|
| 310-1(1)-12D         |             | \$555 |
| 310-1(1)-24D         |             | \$555 |
| 310-1(1)-F-12D       | Fail safe   | \$555 |
| 310-1(1)-F-24D       | Fail safe   | \$555 |
| 310-1(1)-12D-LCBMA   |             | \$696 |
| 310-1(1)-24D-LCBMA   |             | \$696 |
| 310-1(1)-F-12D-LCBMA | Fail safe   | \$696 |
| 310-1(1)-F-24D-LCBMA | Fail safe   | \$696 |

### HES Folger Adam SB:310-1(PK)

#### Electric Strike Bodies

| ITEM                  | DESCRIPTION | PRICE |
|-----------------------|-------------|-------|
| 310-1(PK)-12D         |             | \$555 |
| 310-1(PK)-24D         |             | \$555 |
| 310-1(PK)-F-12D       | Fail safe   | \$555 |
| 310-1(PK)-F-24D       | Fail safe   | \$555 |
| 310-1(PK)-12D-LCBMA   |             | \$696 |
| 310-1(PK)-24D-LCBMA   |             | \$696 |
| 310-1(PK)-F-12D-LCBMA | Fail safe   | \$696 |
| 310-1(PK)-F-24D-LCBMA | Fail safe   | \$696 |

### HES Folger Adam SB:310-1(SK)

#### Electric Strike Bodies

| ITEM                  | DESCRIPTION | PRICE |
|-----------------------|-------------|-------|
| 310-1(SK)-12D         |             | \$571 |
| 310-1(SK)-24D         |             | \$571 |
| 310-1(SK)-F-12D       | Fail safe   | \$571 |
| 310-1(SK)-F-24D       | Fail safe   | \$571 |
| 310-1(SK)-12D-LCBMA   |             | \$711 |
| 310-1(SK)-24D-LCBMA   |             | \$711 |
| 310-1(SK)-F-12D-LCBMA | Fail safe   | \$711 |
| 310-1(SK)-F-24D-LCBMA | Fail safe   | \$711 |

### How to Order Specify quantity and the following information. Order related products separately.

| PREFIX                  | SERIES                        | KEEPER STYLE   | FAIL SAFE/SECURE                              | VOLTAGE                    | OPTION(S)   |
|-------------------------|-------------------------------|--|---|----------------------------|---|
| <b>SB</b>               | <b>310-1</b>                  | <b>(3/4)</b>   | <b>- F</b>                                    | <b>- 24D</b>               | <b>- LCBMA</b>  |
| <b>Strike BODY ONLY</b> |                               |  |   |                            |   |
| <b>SB</b> Strike Body   | <b>310-1</b> Strike Body Only | (1/2) 1/2" keeper<br>(3/4) 3/4" keeper<br>(1) 1" keeper<br>(PK) For use with 3/4" Pullman style latchbolts<br>(SK) For use with Squarebolt® style rim exit devices | (blank) Fail Secure (Standard)<br>F Fail Safe | 12D 12 Volt<br>24D 24 Volt | LCBMA Latchbolt & locking cam monitor with auxiliary switch |

### HES Folger Adam 310-2 Complete Pacs for Latchbolt Locks

| MODEL             | DESCRIPTION | 630   | 605   | 606   | 612   | 613   | 629   |
|-------------------|-------------|-------|-------|-------|-------|-------|-------|
| 310-2-12D         |             | \$708 | \$815 | \$783 | \$783 | \$746 | \$815 |
| 310-2-24D         |             | \$708 | \$815 | \$783 | \$783 | \$746 | \$815 |
| 310-2-F-12D       | Fail safe   | \$708 | \$815 | \$783 | \$783 | \$746 | \$815 |
| 310-2-F-24D       | Fail safe   | \$708 | \$815 | \$783 | \$783 | \$746 | \$815 |
| 310-2-12D-LCBMA   |             | \$848 | \$955 | \$922 | \$922 | \$887 | \$955 |
| 310-2-24D-LCBMA   |             | \$848 | \$955 | \$922 | \$922 | \$887 | \$955 |
| 310-2-F-12D-LCBMA | Fail safe   | \$848 | \$955 | \$922 | \$922 | \$887 | \$955 |
| 310-2-F-24D-LCBMA | Fail safe   | \$848 | \$955 | \$922 | \$922 | \$887 | \$955 |



### Faceplates

| MODEL    | 630   | 605   | 606   | 612   | 613   | 629   |
|----------|-------|-------|-------|-------|-------|-------|
| FP-310-2 | \$153 | \$260 | \$226 | \$226 | \$191 | \$260 |

### HES Folger Adam 310-2 3/4 Complete Pacs for Latchbolt Locks

| MODEL                 | DESCRIPTION | 630   | 605    | 606    | 612    | 613   | 629    |
|-----------------------|-------------|-------|--------|--------|--------|-------|--------|
| 310-2 3/4-12D         |             | \$808 | \$912  | \$881  | \$881  | \$846 | \$910  |
| 310-2 3/4-24D         |             | \$808 | \$912  | \$881  | \$881  | \$846 | \$910  |
| 310-2 3/4-F-12D       | Fail safe   | \$808 | \$912  | \$881  | \$881  | \$846 | \$910  |
| 310-2 3/4-F-24D       | Fail safe   | \$808 | \$912  | \$881  | \$881  | \$846 | \$910  |
| 310-2 3/4-12D-LCBMA   |             | \$947 | \$1052 | \$1021 | \$1021 | \$985 | \$1050 |
| 310-2 3/4-24D-LCBMA   |             | \$947 | \$1052 | \$1021 | \$1021 | \$985 | \$1050 |
| 310-2 3/4-F-12D-LCBMA | Fail safe   | \$947 | \$1052 | \$1021 | \$1021 | \$985 | \$1050 |
| 310-2 3/4-F-24D-LCBMA | Fail safe   | \$947 | \$1052 | \$1021 | \$1021 | \$985 | \$1050 |

### HES Folger Adam 310-2 3/4OB Complete Pacs for Latchbolt Locks

| MODEL             | DESCRIPTION | 630   | 605    | 606    | 612    | 613    | 629    |
|-------------------|-------------|-------|--------|--------|--------|--------|--------|
| 310-2 3/4OB-12D   |             | \$999 | \$1105 | \$1073 | \$1073 | \$1041 | \$1105 |
| 310-2 3/4OB-24D   |             | \$999 | \$1105 | \$1073 | \$1073 | \$1041 | \$1105 |
| 310-2 3/4OB-F-12D | Fail safe   | \$999 | \$1105 | \$1073 | \$1073 | \$1041 | \$1105 |
| 310-2 3/4OB-F-24D | Fail safe   | \$999 | \$1105 | \$1073 | \$1073 | \$1041 | \$1105 |

### Faceplates

| MODEL         | 630   | 605   | 606   | 612   | 613   | 629   |
|---------------|-------|-------|-------|-------|-------|-------|
| FP-310-2-34OB | \$442 | \$548 | \$518 | \$518 | \$485 | \$548 |

### Faceplates

| MODEL       | 630   | 605   | 606   | 612   | 613   | 629   |
|-------------|-------|-------|-------|-------|-------|-------|
| FP-310-2-34 | \$252 | \$356 | \$326 | \$326 | \$290 | \$354 |

### HES Folger Adam 310-3-1 Complete Pacs for Latchbolt Locks & Deadbolts

| MODEL               | DESCRIPTION | 630    | 605    | 606    | 612    | 613    | 629    |
|---------------------|-------------|--------|--------|--------|--------|--------|--------|
| 310-3-1-12D         |             | \$1012 | \$1068 | \$1042 | \$1042 | \$1007 | \$1068 |
| 310-3-1-24D         |             | \$1012 | \$1068 | \$1042 | \$1042 | \$1007 | \$1068 |
| 310-3-1-F-12D       | Fail safe   | \$1012 | \$1068 | \$1042 | \$1042 | \$1007 | \$1068 |
| 310-3-1-F-24D       | Fail safe   | \$1012 | \$1068 | \$1042 | \$1042 | \$1007 | \$1068 |
| 310-3-1-12D-LCBMA   |             | \$1152 | \$1207 | \$1181 | \$1181 | \$1147 | \$1207 |
| 310-3-1-24D-LCBMA   |             | \$1152 | \$1207 | \$1181 | \$1181 | \$1147 | \$1207 |
| 310-3-1-F-12D-LCBMA | Fail safe   | \$1152 | \$1207 | \$1181 | \$1181 | \$1147 | \$1207 |
| 310-3-1-F-24D-LCBMA | Fail safe   | \$1152 | \$1207 | \$1181 | \$1181 | \$1147 | \$1207 |

### Faceplates

| MODEL      | 630   | 605   | 606   | 612   | 613   | 629   |
|------------|-------|-------|-------|-------|-------|-------|
| FP-310-3-1 | \$457 | \$512 | \$486 | \$486 | \$452 | \$512 |

### How to Order Specify quantity and the following information. Order related products separately.

| SERIES  | FAIL SAFE/SECURE               | VOLTAGE                    | FINISH   | OPTION(S)  |
|---|--------------------------------|----------------------------|--|--|
| <b>310-2</b>  | <b>- F</b>                     | <b>- 24D</b>               | <b>- 613</b>   | <b>- LCBMA</b>   |
| <b>COMPLETE PACS</b>  |                                |                            |  |  |
| 310-2 1/2" keeper standard; for up to a 5/8" throw latchbolt                      | (blank) Fail Secure (Standard) | 12D 12 Volt<br>24D 24 Volt | 605 Bright Brass<br>606 Satin Brass<br>612 Satin Bronze<br>613 Bronze Toned<br>629 Bright Stainless Steel<br>630 Satin Stainless Steel | LCBMA* Latchbolt & locking cam monitor with auxiliary switch |
| 310-2 3/4 3/4" keeper standard; for up to a 3/4" throw latchbolt without deadbolt | F Fail Safe                    |                            |  |  |
| 310-2 3/4OB* 3/4" keeper standard; for a pair of doors without a door coordinator |                                |                            |  |  |
| 310-3-1 1" keeper standard; for up to a 3/4" throw latchbolt and a 1" deadbolt    |                                |                            |  |  |

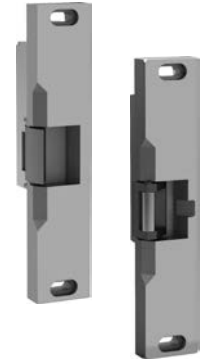
### How to Order

| PREFIX                | SERIES  | FINISH   |
|-----------------------|---|--|
| <b>FP</b>             | <b>- 310-2 3/4OB</b>  | <b>- 630</b>   |
| <b>FACEPLATE ONLY</b> |   |  |
| FP Faceplate          | 310-2 1/2" keeper standard; for up to a 5/8" throw latchbolt<br>310-2 3/4 3/4" keeper standard; for up to a 3/4" throw latchbolt without deadbolt<br>310-2 3/4OB 3/4" keeper standard; for a pair of doors without a door coordinator<br>310-3-1 1" keeper standard; for up to a 3/4" throw latchbolt and a 1" deadbolt | 605 Bright Brass<br>606 Satin Brass<br>612 Satin Bronze<br>613 Bronze Toned<br>629 Bright Stainless Steel<br>630 Satin Stainless Steel |

\*LCBMA not available with 310-2 3/4OB.

## HES Folger Adam 310-4 Complete Pacs for Pullman Rim Exit Devices

| MODEL             | DESCRIPTION | 630   | 605   | 606   | 612   | 613   | 629   |
|-------------------|-------------|-------|-------|-------|-------|-------|-------|
| 310-4-12D         |             | \$740 | \$850 | \$818 | \$818 | \$781 | \$850 |
| 310-4-24D         |             | \$740 | \$850 | \$818 | \$818 | \$781 | \$850 |
| 310-4-F-12D       | Fail safe   | \$740 | \$850 | \$818 | \$818 | \$781 | \$850 |
| 310-4-F-24D       | Fail safe   | \$740 | \$850 | \$818 | \$818 | \$781 | \$850 |
| 310-4-12D-LCBMA   |             | \$879 | \$989 | \$958 | \$958 | \$920 | \$989 |
| 310-4-24D-LCBMA   |             | \$879 | \$989 | \$958 | \$958 | \$920 | \$989 |
| 310-4-F-12D-LCBMA | Fail safe   | \$879 | \$989 | \$958 | \$958 | \$920 | \$989 |
| 310-4-F-24D-LCBMA | Fail safe   | \$879 | \$989 | \$958 | \$958 | \$920 | \$989 |



### Faceplates

| MODEL    | 630   | 605   | 606   | 612   | 613   | 629   |
|----------|-------|-------|-------|-------|-------|-------|
| FP-310-4 | \$184 | \$294 | \$263 | \$263 | \$224 | \$294 |

## HES Folger Adam 310-4(S) Complete Pacs for Squarebolt® Rim Exit Device

| MODEL                | DESCRIPTION | 630   | 605    | 606    | 612    | 613   | 629    |
|----------------------|-------------|-------|--------|--------|--------|-------|--------|
| 310-4(S)-12D         |             | \$786 | \$892  | \$861  | \$861  | \$825 | \$892  |
| 310-4(S)-24D         |             | \$786 | \$892  | \$861  | \$861  | \$825 | \$892  |
| 310-4(S)-F-12D       | Fail safe   | \$786 | \$892  | \$861  | \$861  | \$825 | \$892  |
| 310-4(S)-F-24D       | Fail safe   | \$786 | \$892  | \$861  | \$861  | \$825 | \$892  |
| 310-4(S)-12D-LCBMA   |             | \$925 | \$1031 | \$1001 | \$1001 | \$964 | \$1031 |
| 310-4(S)-24D-LCBMA   |             | \$925 | \$1031 | \$1001 | \$1001 | \$964 | \$1031 |
| 310-4(S)-F-12D-LCBMA | Fail safe   | \$925 | \$1031 | \$1001 | \$1001 | \$964 | \$1031 |
| 310-4(S)-F-24D-LCBMA | Fail safe   | \$925 | \$1031 | \$1001 | \$1001 | \$964 | \$1031 |

### Faceplates

| MODEL       | 630   | 605   | 606   | 612   | 613   | 629   |
|-------------|-------|-------|-------|-------|-------|-------|
| FP-310-4-SK | \$215 | \$321 | \$290 | \$290 | \$254 | \$321 |

### How to Order *Specify quantity and the following information. Order related products separately.*

| SERIES   | FAIL SAFE/SECURE                              | VOLTAGE                    | FINISH  | OPTION(S)  |
|--|---|----------------------------|---|--|
| <b>310-4 (S)</b>   | <b>- F</b>                                    | <b>- 12D</b>               | <b>- 605</b>  | <b>- LCBMA</b>   |
| <b>COMPLETE PACS</b>   |   |                            |   |  |
| 310-4 PK keeper standard; for use with 3/4" Pullman style latchbolts         | (blank) Fail Secure (Standard)<br>F Fail Safe | 12D 12 Volt<br>24D 24 Volt | 605 Bright Brass<br>606 Satin Brass   | LCBMA* Latchbolt & locking cam monitor with auxiliary switch |
| 310-4(S) SK keeper standard; for use with Squarebolt® style rim exit devices |   |                            | 612 Satin Bronze<br>613 Bronze Toned<br>629 Bright Stainless Steel<br>630 Satin Stainless Steel |  |

### How to Order *Specify quantity and the following information. Order related products separately.*

| PREFIX                 | SERIES   | KEEPER STYLE   | FINISH   |
|------------------------|--|--|--|
| <b>FP</b>              | <b>- 310-4</b>   | <b>(SK)</b>  | <b>- 630</b>   |
| <b>FACEPIATES ONLY</b> |  |  |  |
| FP Faceplate           | 310-4 PK keeper standard; for use with 3/4" Pullman style latchbolts<br>310-4(S) SK keeper standard; for use with Squarebolt® style rim exit devices | (SK) For use with Squarebolt® style rim exit devices | 605 Bright Brass<br>606 Satin Brass<br>612 Satin Bronze<br>613 Bronze Toned<br>629 Bright Stainless Steel<br>630 Satin Stainless Steel |



## HES Folger Adam 310-4-1 Complete Pacs for Surface Vertical Rods

| MODEL               | DESCRIPTION | 630    | 605    | 606    | 612    | 613    | 629    |
|---------------------|-------------|--------|--------|--------|--------|--------|--------|
| 310-4-1-12D         |             | \$1385 | \$1429 | \$1393 | \$1393 | \$1385 | \$1429 |
| 310-4-1-24D         |             | \$1385 | \$1429 | \$1393 | \$1393 | \$1385 | \$1429 |
| 310-4-1-F-12D       | Fail safe   | \$1385 | \$1429 | \$1393 | \$1393 | \$1385 | \$1429 |
| 310-4-1-F-24D       | Fail safe   | \$1385 | \$1429 | \$1393 | \$1393 | \$1385 | \$1429 |
| 310-4-1-12D-LCBMA   |             | \$1634 | \$1679 | \$1641 | \$1641 | \$1634 | \$1679 |
| 310-4-1-24D-LCBMA   |             | \$1634 | \$1679 | \$1641 | \$1641 | \$1634 | \$1679 |
| 310-4-1-F-12D-LCBMA | Fail safe   | \$1634 | \$1679 | \$1641 | \$1641 | \$1634 | \$1679 |
| 310-4-1-F-24D-LCBMA | Fail safe   | \$1634 | \$1679 | \$1641 | \$1641 | \$1634 | \$1679 |



**INSTALLATION NOTE:** Double-door models are available with four different center-to-center dimensions between latchbolt keepers. Keepers are wide enough to compensate for vertical rod exit bolts, which may be as much as 3/8" (10 mm) off center-to-center dimension, either way. When using an electric strike in conjunction with a vertical rod exit device, it is necessary that:

1. The bottom rod of the exit device be removed or made inoperative
2. The latchbolt of the exit device be the "Pullman" or beveled type
3. The latchbolt be free-latching and remain projected while the door is open. Mechanisms that hold the latchbolt retracted while the door is open, and automatically release it when the door is closed, must be removed or made inoperative.

### Faceplates

| MODEL      | 630   | 605   | 606   | 612   | 613   |
|------------|-------|-------|-------|-------|-------|
| FP-310-4-1 | \$383 | \$428 | \$390 | \$390 | \$383 |

## HES Folger Adam 310-4-2 Complete Pacs for Surface Vertical Rods

| MODEL               | DESCRIPTION | 630    | 605    | 606    | 612    | 613    | 629    |
|---------------------|-------------|--------|--------|--------|--------|--------|--------|
| 310-4-2-12D         |             | \$1385 | \$1429 | \$1393 | \$1393 | \$1385 | \$1429 |
| 310-4-2-24D         |             | \$1385 | \$1429 | \$1393 | \$1393 | \$1385 | \$1429 |
| 310-4-2-F-12D       | Fail safe   | \$1385 | \$1429 | \$1393 | \$1393 | \$1385 | \$1429 |
| 310-4-2-F-24D       | Fail safe   | \$1385 | \$1429 | \$1393 | \$1393 | \$1385 | \$1429 |
| 310-4-2-12D-LCBMA   |             | \$1634 | \$1679 | \$1641 | \$1641 | \$1634 | \$1679 |
| 310-4-2-24D-LCBMA   |             | \$1634 | \$1679 | \$1641 | \$1641 | \$1634 | \$1679 |
| 310-4-2-F-12D-LCBMA | Fail safe   | \$1634 | \$1679 | \$1641 | \$1641 | \$1634 | \$1679 |
| 310-4-2-F-24D-LCBMA | Fail safe   | \$1634 | \$1679 | \$1641 | \$1641 | \$1634 | \$1679 |

### Faceplates

| MODEL      | 630   | 605   | 606   | 612   | 613   | 629   |
|------------|-------|-------|-------|-------|-------|-------|
| FP-310-4-2 | \$383 | \$428 | \$390 | \$390 | \$383 | \$428 |

## HES Folger Adam 310-4-3 Complete Pacs for Surface Vertical Rods

| MODEL               | DESCRIPTION | 630    | 605    | 606    | 612    | 613    | 629    |
|---------------------|-------------|--------|--------|--------|--------|--------|--------|
| 310-4-3-12D         |             | \$1450 | \$1497 | \$1462 | \$1462 | \$1450 | \$1497 |
| 310-4-3-24D         |             | \$1450 | \$1497 | \$1462 | \$1462 | \$1450 | \$1497 |
| 310-4-3-F-12D       | Fail safe   | \$1450 | \$1497 | \$1462 | \$1462 | \$1450 | \$1497 |
| 310-4-3-F-24D       | Fail safe   | \$1450 | \$1497 | \$1462 | \$1462 | \$1450 | \$1497 |
| 310-4-3-12D-LCBMA   |             | \$1699 | \$1745 | \$1710 | \$1710 | \$1699 | \$1745 |
| 310-4-3-24D-LCBMA   |             | \$1699 | \$1745 | \$1710 | \$1710 | \$1699 | \$1745 |
| 310-4-3-F-12D-LCBMA | Fail safe   | \$1699 | \$1745 | \$1710 | \$1710 | \$1699 | \$1745 |
| 310-4-3-F-24D-LCBMA | Fail safe   | \$1699 | \$1745 | \$1710 | \$1710 | \$1699 | \$1745 |

### Faceplates

| MODEL      | 630   | 605   | 606   | 612   | 613   |
|------------|-------|-------|-------|-------|-------|
| FP-310-4-3 | \$448 | \$494 | \$459 | \$459 | \$448 |

## HES Folger Adam 310-4-30 Complete Pacs for Surface Vertical Rods

| MODEL                | DESCRIPTION | 630    | 605    | 606    | 612    | 613    | 629    |
|----------------------|-------------|--------|--------|--------|--------|--------|--------|
| 310-4-30-12D         |             | \$1450 | \$1497 | \$1462 | \$1462 | \$1450 | \$1497 |
| 310-4-30-24D         |             | \$1450 | \$1497 | \$1462 | \$1462 | \$1450 | \$1497 |
| 310-4-30-F-12D       | Fail safe   | \$1450 | \$1497 | \$1462 | \$1462 | \$1450 | \$1497 |
| 310-4-30-F-24D       | Fail safe   | \$1450 | \$1497 | \$1462 | \$1462 | \$1450 | \$1497 |
| 310-4-30-12D-LCBMA   |             | \$1699 | \$1745 | \$1710 | \$1710 | \$1699 | \$1745 |
| 310-4-30-24D-LCBMA   |             | \$1699 | \$1745 | \$1710 | \$1710 | \$1699 | \$1745 |
| 310-4-30-F-12D-LCBMA | Fail safe   | \$1699 | \$1745 | \$1710 | \$1710 | \$1699 | \$1745 |
| 310-4-30-F-24D-LCBMA | Fail safe   | \$1699 | \$1745 | \$1710 | \$1710 | \$1699 | \$1745 |

### Faceplates

| MODEL       | 630   | 605   | 606   | 612   | 613   |
|-------------|-------|-------|-------|-------|-------|
| FP-310-4-30 | \$448 | \$494 | \$459 | \$459 | \$448 |

How to Orders on next page

**How to Order** *Specify quantity and the following information. Order related products separately.*

| SERIES  | KEEPER STYLE   | FAIL SAFE/SECURE                      | VOLTAGE            | FINISH   | OPTION(S)   |
|---|--|---------------------------------------|--------------------|--|---|
| <b>310-4-X</b>  | <b>(PK)</b>  | <b>F</b>                              | <b>- 24D</b>       | <b>- 612</b>   | <b>- LCBMA</b>  |
| <b>COMPLETE PACS</b>  |  |                                       |                    |  |   |
| <b>1</b> For use with vertical rod spacing between 4" and 4-3/4"      | <b>(PK)</b> For use with 3/4" Pullman style latchbolts | <b>(blank)</b> Fail Secure (Standard) | <b>12D</b> 12 Volt | <b>605</b> Bright Brass  | <b>LCBMA</b><br>Latchbolt & locking cam monitor with auxiliary switch |
| <b>2</b> For use with vertical rod spacing between 4-5/8" and 5-3/8"  |  |                                       | <b>24D</b> 24 Volt | <b>606</b> Satin Brass   |   |
| <b>3</b> For use with vertical rod spacing between 5-1/4" and 6"      |  | <b>F</b> Fail Safe                    |                    | <b>612</b> Satin Bronze  |   |
| <b>30</b> For use with vertical rod spacing between 2-5/8" and 3-3/8" |  |                                       |                    | <b>613</b> Bronze Toned<br><b>629</b> Bright Stainless Steel<br><b>630</b> Satin Stainless Steel |   |

**How to Order** *Specify quantity and the following information. Order related products separately.*

| PREFIX                | SERIES  | KEEPER STYLE   | FINISH   |
|-----------------------|---|--|--|
| <b>FP</b>             | <b>- 310-4-X</b>  | <b>(PK)</b>  | <b>- 630</b>   |
| <b>FACEPLATE ONLY</b> |   |  |  |
| <b>FP</b> Faceplate   | <b>1</b> For use with vertical rod spacing between 4" and 4-3/4"<br><b>2</b> For use with vertical rod spacing between 4-5/8" and 5-3/8"<br><b>30</b> For use with vertical rod spacing between 2-5/8" and 3-3/8" | <b>(PK)</b> For use with 3/4" Pullman style latchbolts | <b>605</b> Bright Brass<br><b>606</b> Satin Brass<br><b>612</b> Satin Bronze<br><b>613</b> Bronze Toned<br><b>629</b> Bright Stainless Steel<br><b>630</b> Satin Stainless Steel |

**HES Folger Adam 310-6-1 Complete Pacs for Concealed Vertical Rods**

| MODEL                      | DESCRIPTION | 627    | 612    |
|----------------------------|-------------|--------|--------|
| <b>310-6-1-12D</b>         |             | \$1396 | \$1627 |
| <b>310-6-1-24D</b>         |             | \$1396 | \$1627 |
| <b>310-6-1-F-12D</b>       | Fail safe   | \$1396 | \$1627 |
| <b>310-6-1-F-24</b>        | Fail safe   | \$1396 | \$1627 |
| <b>310-6-1-12D-LCBMA</b>   |             | \$1644 | \$1875 |
| <b>310-6-1-24D-LCBMA</b>   |             | \$1644 | \$1875 |
| <b>310-6-1-F-12D-LCBMA</b> | Fail safe   | \$1644 | \$1875 |
| <b>310-6-1-F-24D-LCBMA</b> | Fail safe   | \$1644 | \$1875 |



*Vertical rod spacing between 4" and 4-3/4".*

**Faceplates**

| MODEL             | 627   | 612   |
|-------------------|-------|-------|
| <b>FP-310-6-1</b> | \$393 | \$624 |

**HES Folger Adam 310-6-2 Complete Pacs for Concealed Vertical Rods**

| MODEL                      | DESCRIPTION | 627    | 612    |
|----------------------------|-------------|--------|--------|
| <b>310-6-2-12D</b>         |             | \$1396 | \$1627 |
| <b>310-6-2-24D</b>         |             | \$1396 | \$1627 |
| <b>310-6-2-F-12D</b>       | Fail safe   | \$1396 | \$1627 |
| <b>310-6-2-F-24D</b>       | Fail safe   | \$1396 | \$1627 |
| <b>310-6-2-12D-LCBMA</b>   |             | \$1644 | \$1875 |
| <b>310-6-2-24D-LCBMA</b>   |             | \$1644 | \$1875 |
| <b>310-6-2-F-12D-LCBMA</b> | Fail safe   | \$1644 | \$1875 |
| <b>310-6-2-F-24D-LCBMA</b> | Fail safe   | \$1644 | \$1875 |

*Vertical rod spacing between 4-5/8" and 5-3/8".*

**Faceplates**

| MODEL             | 627   | 612   |
|-------------------|-------|-------|
| <b>FP-310-6-2</b> | \$393 | \$624 |

**HES Folger Adam 310-6-3 Complete Pacs for Concealed Vertical Rods**

| MODEL                      | DESCRIPTION | 627    | 612    |
|----------------------------|-------------|--------|--------|
| <b>310-6-3-12D</b>         |             | \$1396 | \$1627 |
| <b>310-6-3-24D</b>         |             | \$1396 | \$1627 |
| <b>310-6-3-F-12D</b>       | Fail safe   | \$1396 | \$1627 |
| <b>310-6-3-F-24D</b>       | Fail safe   | \$1396 | \$1627 |
| <b>310-6-3-12D-LCBMA</b>   |             | \$1644 | \$1875 |
| <b>310-6-3-24D-LCBMA</b>   |             | \$1644 | \$1875 |
| <b>310-6-3-F-12D-LCBMA</b> | Fail safe   | \$1644 | \$1875 |
| <b>310-6-3-F-24D-LCBMA</b> | Fail safe   | \$1644 | \$1875 |

*Vertical rod spacing between 5-1/4" and 6".*

**Faceplates**

| MODEL             | 627   | 612   |
|-------------------|-------|-------|
| <b>FP-310-6-3</b> | \$393 | \$624 |

## HES Folger Adam 310-6-8 Complete Pacs for Concealed Vertical Rods

| MODEL               | DESCRIPTION | 627    | 612    |
|---------------------|-------------|--------|--------|
| 310-6-8-12D         |             | \$1396 | \$1627 |
| 310-6-8-24D         |             | \$1396 | \$1627 |
| 310-6-8-F-12D       | Fail safe   | \$1396 | \$1627 |
| 310-6-8-F-24D       | Fail safe   | \$1396 | \$1627 |
| 310-6-8-12D-LCBMA   |             | \$1644 | \$1875 |
| 310-6-8-24D-LCBMA   |             | \$1644 | \$1875 |
| 310-6-8-F-12D-LCBMA | Fail safe   | \$1644 | \$1875 |
| 310-6-8-F-24D-LCBMA | Fail safe   | \$1644 | \$1875 |

Only used on active leaf.

## HES Folger Adam 310-6-30 Complete Pacs for Concealed Vertical Rods

| MODEL                | DESCRIPTION | 627    | 612    |
|----------------------|-------------|--------|--------|
| 310-6-30-12D         |             | \$1396 | \$1627 |
| 310-6-30-24D         |             | \$1396 | \$1627 |
| 310-6-30-F-12D       | Fail safe   | \$1396 | \$1627 |
| 310-6-30-F-24D       | Fail safe   | \$1396 | \$1627 |
| 310-6-30-12D-LCBMA   |             | \$1644 | \$1875 |
| 310-6-30-24D-LCBMA   |             | \$1644 | \$1875 |
| 310-6-30-F-12D-LCBMA | Fail safe   | \$1905 | \$1670 |
| 310-6-30-F-24D-LCBMA | Fail safe   | \$1644 | \$1875 |

Vertical rod spacing between 2-5/8" and 3-3/8".

### Faceplates

| MODEL      | 627   | 612   |
|------------|-------|-------|
| FP-310-6-8 | \$393 | \$624 |

### Faceplates

| MODEL       | 627   | 612   |
|-------------|-------|-------|
| FP-310-6-30 | \$393 | \$624 |

**INSTALLATION NOTE:** Double-door models are available with four different center-to-center dimensions between latchbolt keepers. Keepers are wide enough to compensate for vertical rod exit bolts, which may be as much as 3/8" (10 mm) off center-to-center dimension, either way. When using an electric strike in conjunction with a vertical rod exit device, it is necessary that:

1. The bottom rod of the exit device be removed or made inoperative
2. The latchbolt of the exit device be the "Pullman" or beveled type
3. The latchbolt be free-latching and remain projected while the door is open. Mechanisms that hold the latchbolt retracted while the door is open, and automatically release it when the door is closed, must be removed or made inoperative.

### How to Order *Specify quantity and the following information. Order related products separately.*

| SERIES   | KEEPER STYLE                                    | FAIL SAFE/SECURE               | VOLTAGE     | FINISH             | OPTION(S)   |
|--|---|--------------------------------|-------------|--------------------|---|
| 310-6-X  | (PK)  | - F                            | - 24D       | - 627              | - LCBMA   |
| <b>COMPLETE PACS</b>   |   |                                |             |                    |   |
| 1 For use with vertical rod spacing between 4" and 4-3/4"      | (PK) For use with 3/4" Pullman style latchbolts | (blank) Fail Secure (Standard) | 12D 12 Volt | 612 Satin Bronze   | LCBMA Latchbolt & locking cam monitor with auxiliary switch |
| 2 For use with vertical rod spacing between 4-5/8" and 5-3/8"  |   |                                | 24D 24 Volt | 627 Satin Aluminum |   |
| 3 For use with vertical rod spacing between 5-1/4" and 6"      |   |                                | F Fail Safe |                    |   |
| 8 For only the active leaf of a pair of doors                  |   |                                |             |                    |   |
| 30 For use with vertical rod spacing between 2-5/8" and 3-3/8" |   |                                |             |                    |   |

### How to Order *Specify quantity and the following information. Order related products separately.*

| PREFIX                | SERIES   | KEEPER STYLE                                    | FINISH             |
|-----------------------|--|---|--------------------|
| FP                    | - 310-6-X  | (PK)  | - 612              |
| <b>FACEPLATE ONLY</b> |  |   |                    |
| FP Faceplate          | 1 For use with vertical rod spacing between 4" and 4-3/4"      | (PK) For use with 3/4" Pullman style latchbolts | 612 Satin Bronze   |
|                       | 2 For use with vertical rod spacing between 4-5/8" and 5-3/8"  |   | 627 Satin Aluminum |
|                       | 3 For use with vertical rod spacing between 5-1/4" and 6"      |   |                    |
|                       | 8 For only the active leaf of a pair of doors                  |   |                    |
|                       | 30 For use with vertical rod spacing between 2-5/8" and 3-3/8" |   |                    |

### HES Folger Adam 310-1-1 Electric Strike Bodies

| MODEL               | DESCRIPTION | 630    |
|---------------------|-------------|--------|
| 310-1-1-12D         |             | \$933  |
| 310-1-1-24D         |             | \$933  |
| 310-1-1-F-12D       | Fail safe   | \$933  |
| 310-1-1-F-24D       | Fail safe   | \$933  |
| 310-1-1-12D-LCBMA   |             | \$1202 |
| 310-1-1-24D-LCBMA   |             | \$1202 |
| 310-1-1-F-12D-LCBMA | Fail safe   | \$1202 |
| 310-1-1-F-24D-LCBMA | Fail safe   | \$1202 |



### HES Folger Adam 310-1-2 Electric Strike Bodies

| MODEL               | DESCRIPTION | 630    |
|---------------------|-------------|--------|
| 310-1-2-12D         |             | \$933  |
| 310-1-2-24D         |             | \$933  |
| 310-1-2-F-12D       | Fail safe   | \$933  |
| 310-1-2-F-24D       | Fail safe   | \$933  |
| 310-1-2-12D-LCBMA   |             | \$1202 |
| 310-1-2-24D-LCBMA   |             | \$1202 |
| 310-1-2-F-12D-LCBMA | Fail safe   | \$1202 |
| 310-1-2-F-24D-LCBMA | Fail safe   | \$1202 |

### HES Folger Adam 310-1-3 Electric Strike Bodies

| MODEL               | DESCRIPTION | 630    |
|---------------------|-------------|--------|
| 310-1-3-12D         |             | \$933  |
| 310-1-3-24D         |             | \$933  |
| 310-1-3-F-12D       | Fail safe   | \$933  |
| 310-1-3-F-24D       | Fail safe   | \$933  |
| 310-1-3-12D-LCBMA   |             | \$1202 |
| 310-1-3-24D-LCBMA   |             | \$1202 |
| 310-1-3-F-12D-LCBMA | Fail safe   | \$1202 |
| 310-1-3-F-24D-LCBMA | Fail safe   | \$1202 |

### HES Folger Adam 310-1-30 Electric Strike Bodies

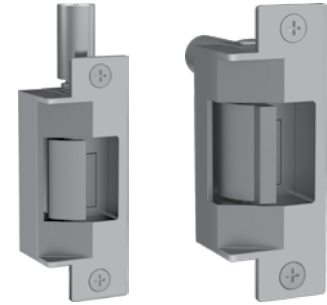
| MODEL                | DESCRIPTION | 630    |
|----------------------|-------------|--------|
| 310-1-30-12D         |             | \$933  |
| 310-1-30-24D         |             | \$933  |
| 310-1-30-F-12D       | Fail safe   | \$933  |
| 310-1-30-F-24D       | Fail safe   | \$933  |
| 310-1-30-12D-LCBMA   |             | \$1202 |
| 310-1-30-24D-LCBMA   |             | \$1202 |
| 310-1-30-F-12D-LCBMA | Fail safe   | \$1202 |
| 310-1-30-F-24D-LCBMA | Fail safe   | \$1202 |

### How to Order *Specify quantity and the following information. Order related products separately.*

| PREFIX                  | SERIES                 | X - MODEL   | KEEPER STYLE                               | FAIL SAFE/SECURE                              | VOLTAGE                    | OPTION(S)   |
|-------------------------|------------------------|---|--|---|----------------------------|---|
| SB                      | - 310-1                | - 1   | (PK)                                       | - F   | - 24D                      | - LCBMA   |
| <b>STRIKE BODY ONLY</b> |                        |   |  |   |                            |   |
| SB Strike Body          | 310-1 Strike Body Only | 1 For use with vertical rod spacing between 4" and 4-3/4"<br>2 For use with vertical rod spacing between 4-5/8" and 5-3/8"<br>3 For use with vertical rod spacing between 5-1/4" and 6"<br>30 For use with vertical rod spacing between 2-5/8" and 3-3/8" | (PK) For use with Pullman style latchbolts | (blank) Fail Secure (Standard)<br>F Fail Safe | 12D 12 Volt<br>24D 24 Volt | LCBMA Latchbolt & locking cam monitor with auxiliary switch |

### HES Folger Adam 712 Complete Pacs for Latchbolt Locks

| MODEL            | DESCRIPTION | 630   | 605   | 606   | 612   | 613   | 629   |
|------------------|-------------|-------|-------|-------|-------|-------|-------|
| 712-12D          |             | \$662 | \$771 | \$741 | \$741 | \$702 | \$741 |
| 712-24D          |             | \$662 | \$771 | \$741 | \$741 | \$702 | \$741 |
| 712-F-12D        | Fail safe   | \$662 | \$771 | \$741 | \$741 | \$702 | \$741 |
| 712-F-24D        | Fail safe   | \$662 | \$771 | \$741 | \$741 | \$702 | \$741 |
| 712-12D-LBMLCM   |             | \$803 | \$912 | \$882 | \$882 | \$842 | \$882 |
| 712-24D-LBMLCM   |             | \$803 | \$912 | \$882 | \$882 | \$842 | \$882 |
| 712-F-12D-LBMLCM | Fail safe   | \$803 | \$912 | \$882 | \$882 | \$842 | \$882 |
| 712-F-24D-LBMLCM | Fail safe   | \$803 | \$912 | \$882 | \$882 | \$842 | \$882 |



### HES Folger Adam 712-75 Complete Pacs for Latchbolt Locks

| MODEL               | DESCRIPTION | 630   | 605   | 606   | 612   | 613   | 629   |
|---------------------|-------------|-------|-------|-------|-------|-------|-------|
| 712-75-12D          |             | \$689 | \$799 | \$765 | \$765 | \$731 | \$765 |
| 712-75-24D          |             | \$689 | \$799 | \$765 | \$765 | \$731 | \$765 |
| 712-75-F-12D        | Fail safe   | \$689 | \$799 | \$765 | \$765 | \$731 | \$765 |
| 712-75-F-24D        | Fail safe   | \$689 | \$799 | \$765 | \$765 | \$731 | \$765 |
| 712-75-12D-LBMLCM   |             | \$830 | \$939 | \$905 | \$905 | \$871 | \$905 |
| 712-75-24D-LBMLCM   |             | \$830 | \$939 | \$905 | \$905 | \$871 | \$905 |
| 712-75-F-12D-LBMLCM | Fail safe   | \$830 | \$939 | \$905 | \$905 | \$871 | \$905 |
| 712-75-F-24D-LBMLCM | Fail safe   | \$830 | \$939 | \$905 | \$905 | \$871 | \$905 |

**700 & 742 Series | LBMLCM:** When using LBMLCM with a SARGENT 78/8200 Series or BEST 40 Series Mortise Lock, a 1/2" or 5/8" keeper latchbolt detection will be dependent on the door gap in order to ensure functionality. Consult customer support regarding use with other manufacturers.

**712-75, 732-75 and 742-75:** The LBMLCM option is compatible with SARGENT 78/8200 Series or BEST 40 Series 3/4" throw mortise lock latchbolts in hollow metal and wood frame applications. Monitoring capabilities are dependent on a maximum 1/8" door gap in order to ensure functionality. Consult customer support regarding use with other manufacturers.

### HES Folger Adam 732 Complete Pacs for Latchbolt Locks

| MODEL            | DESCRIPTION | 630   | 605   | 606   | 612   | 613   | 629   |
|------------------|-------------|-------|-------|-------|-------|-------|-------|
| 732-12D          |             | \$662 | \$771 | \$741 | \$741 | \$702 | \$741 |
| 732-24D          |             | \$662 | \$771 | \$741 | \$741 | \$702 | \$741 |
| 732-F-12D        | Fail safe   | \$662 | \$771 | \$741 | \$741 | \$702 | \$741 |
| 732-F-24D        | Fail safe   | \$662 | \$771 | \$741 | \$741 | \$702 | \$741 |
| 732-12D-LBMLCM   |             | \$803 | \$912 | \$882 | \$882 | \$842 | \$882 |
| 732-24D-LBMLCM   |             | \$803 | \$912 | \$882 | \$882 | \$842 | \$882 |
| 732-F-12D-LBMLCM | Fail safe   | \$803 | \$912 | \$882 | \$882 | \$842 | \$882 |
| 732-F-24D-LBMLCM | Fail safe   | \$803 | \$912 | \$882 | \$882 | \$842 | \$882 |

### HES Folger Adam 732-75 Complete Pacs for Latchbolt Locks

| MODEL               | DESCRIPTION | 630   | 605   | 606   | 612   | 613   | 629   |
|---------------------|-------------|-------|-------|-------|-------|-------|-------|
| 732-75-12D          |             | \$689 | \$751 | \$765 | \$765 | \$731 | \$765 |
| 732-75-24D          |             | \$689 | \$799 | \$765 | \$765 | \$731 | \$765 |
| 732-75-F-12D        | Fail safe   | \$689 | \$799 | \$765 | \$765 | \$731 | \$765 |
| 732-75-F-24D        | Fail safe   | \$689 | \$799 | \$765 | \$765 | \$731 | \$765 |
| 732-75-12D-LBMLCM   |             | \$830 | \$939 | \$905 | \$905 | \$871 | \$905 |
| 732-75-24D-LBMLCM   |             | \$830 | \$939 | \$905 | \$905 | \$871 | \$905 |
| 732-75-F-12D-LBMLCM | Fail safe   | \$830 | \$939 | \$905 | \$905 | \$871 | \$905 |
| 732-75-F-24D-LBMLCM | Fail safe   | \$830 | \$939 | \$905 | \$905 | \$871 | \$905 |

### Faceplates

| MODEL     | 630   | 605   | 606   | 612   | 613   | 629   |
|-----------|-------|-------|-------|-------|-------|-------|
| FP-712    | \$143 | \$251 | \$222 | \$222 | \$183 | \$222 |
| FP-712-75 | \$169 | \$279 | \$245 | \$245 | \$212 | \$245 |

### How to Order Complete Pacs Specify quantity and the following information. Order related products separately.

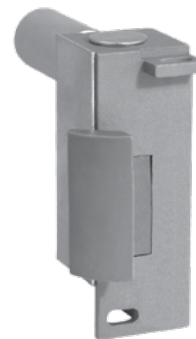
| SERIES   | FAIL SAFE/SECURE       | VOLTAGE      | FINISH                     | OPTION(S)                       |
|--|------------------------|--------------|----------------------------|---------------------------------|
| <b>712</b>   | <b>- F</b>             | <b>- 24D</b> | <b>- 630</b>               | <b>- LBMLCM</b>                 |
| 712 1/2" PK keeper standard; Hollow metal frames, for up to a 5/8" throw latchbolt                     | (blank)                | 12D 12 Volt  | 605 Bright Brass           | LBMLCM                          |
| 712-75 3/4" PK keeper standard; Hollow metal frames, for up to a 3/4" throw latchbolt without deadbolt | Fail Secure (Standard) | 24D 24 Volt  | 606 Satin Brass            | Latchbolt & locking cam monitor |
|  |                        |              | 612 Satin Bronze           |                                 |
| 732 1/2" PK keeper standard; Wood frames, for up to a 5/8" throw latchbolt                             | F Fail Safe            |              | 613 Bronze Toned           |                                 |
| 732-75 3/4" PK keeper standard; Wood frames, for up to a 3/4" throw latchbolt without deadbolt         |                        |              | 629 Bright Stainless Steel |                                 |
|  |                        |              | 630 Satin Stainless Steel  |                                 |

### How to Order Faceplate Only

| PREFIX       | SERIES   | FINISH                     |
|--------------|--|----------------------------|
| <b>FP</b>    | <b>- 732-75</b>  | <b>- 613</b>               |
| FP Faceplate | 712 1/2" PK keeper standard; Hollow metal frames, for up to a 5/8" throw latchbolt                     | 605 Bright Brass           |
|              | 712-75 3/4" PK keeper standard; Hollow metal frames, for up to a 3/4" throw latchbolt without deadbolt | 606 Satin Brass            |
|              | 732 PK keeper standard; Wood frames, for up to a 5/8" throw latchbolt                                  | 612 Satin Bronze           |
|              | 732-75 3/4" PK keeper standard; Wood frames, for up to a 3/4" throw latchbolt without deadbolt         | 613 Bronze Toned           |
|              |  | 629 Bright Stainless Steel |
|              |  | 630 Satin Stainless Steel  |

## HES Folger Adam SB710 Electric Strike Bodies

| MODEL            | DESCRIPTION | 630   |
|------------------|-------------|-------|
| 710-12D          |             | \$520 |
| 710-24D          |             | \$520 |
| 710-F-12D        | Fail safe   | \$520 |
| 710-F-24D        | Fail safe   | \$520 |
| 710-12D-LBMLCM   |             | \$660 |
| 710-24D-LBMLCM   |             | \$660 |
| 710-F-12D-LBMLCM | Fail safe   | \$660 |
| 710-F-24D-LBMLCM | Fail safe   | \$660 |



## HES Folger Adam SB710-75 Electric Strike Bodies

| MODEL               | DESCRIPTION | 630   |
|---------------------|-------------|-------|
| 710-75-12D          |             | \$520 |
| 710-75-24D          |             | \$520 |
| 710-75-F-12D        | Fail safe   | \$520 |
| 710-75-F-24D        | Fail safe   | \$520 |
| 710-75-12D-LBMLCM   |             | \$660 |
| 710-75-24D-LBMLCM   |             | \$660 |
| 710-75-F-12D-LBMLCM | Fail safe   | \$660 |
| 710-75-F-24D-LBMLCM | Fail safe   | \$660 |

## HES Folger Adam 730 Electric Strike Bodies

| MODEL            | DESCRIPTION | 630   |
|------------------|-------------|-------|
| 730-12D          |             | \$520 |
| 730-24D          |             | \$520 |
| 730-F-12D        | Fail safe   | \$520 |
| 730-F-24D        | Fail safe   | \$520 |
| 730-12D-LBMLCM   |             | \$660 |
| 730-24D-LBMLCM   |             | \$660 |
| 730-F-12D-LBMLCM | Fail safe   | \$660 |
| 730-F-24D-LBMLCM | Fail safe   | \$660 |

## HES Folger Adam 730-75 Electric Strike Bodies

| MODEL               | DESCRIPTION | 630   |
|---------------------|-------------|-------|
| 730-75-24D          |             | \$520 |
| 730-75-12D          |             | \$520 |
| 730-75-F-12D        | Fail safe   | \$520 |
| 730-75-F-24D        | Fail safe   | \$520 |
| 730-75-12D-LBMLCM   |             | \$660 |
| 730-75-24D-LBMLCM   |             | \$660 |
| 730-75-F-12D-LBMLCM | Fail safe   | \$660 |
| 730-75-F-24D-LBMLCM | Fail safe   | \$660 |

## How to Order *Specify quantity and the following information. Order related products separately.*

| PREFIX                  | STRIKE SERIES  | KEEPER STYLE                                     | FAIL SAFE/SECURE  | VOLTAGE                                  | OPTION(S)  |
|-------------------------|--|--|---|--|--|
| <b>SB</b>               | <b>- 710</b>   | <b>(3/4)</b>                                     | <b>- F</b>  | <b>- 24D</b>                             | <b>-LCBMA</b>                                    |
| <b>Strike BODY ONLY</b> |  |  |   |  |  |
| <b>SB Strike Body</b>   | <b>710</b> Hollow metal frames, for up to a 5/8" throw latchbolt<br><b>710-75</b> Hollow metal frames, for up to a 3/4" throw latchbolt without deadbolt<br><b>730</b> Wood frames, for up to a 5/8" throw latchbolt<br><b>730-75</b> Wood frames, for up to a 3/4" throw latchbolt without deadbolt | <b>1/2</b> 1/2" Keeper<br><b>3/4</b> 3/4" Keeper | <b>(blank)</b> Fail Secure (Standard)<br><b>F</b> Fail Safe | <b>12D</b> 12 Volt<br><b>24D</b> 24 Volt | <b>LBMLCM</b><br>Latchbolt & locking cam monitor |

**INSTALLATION NOTE:** Double-door models are available with four different center-to-center dimensions between latchbolt keepers. Keepers are wide enough to compensate for vertical rod exit bolts, which may be as much as 3/8" (10 mm) off center-to-center dimension, either way. When using an electric strike in conjunction with a vertical rod exit device, it is necessary that:

1. The bottom rod of the exit device be removed or made inoperative.
2. The latchbolt of the exit device be the "Pullman" or beveled type.
3. The latchbolt be free-latching and remain projected while the door is open. Mechanisms that hold the latchbolt retracted while the door is open, and automatically release it when the door is closed, must be removed or made inoperative.

### HES Folger Adam 742-75 Complete Pacs for Latchbolt Locks

| MODEL               | DESCRIPTION | 630   | 605   | 606   | 612   | 613   | 629   |
|---------------------|-------------|-------|-------|-------|-------|-------|-------|
| 742-75-12D          |             | \$716 | \$826 | \$793 | \$793 | \$754 | \$793 |
| 742-75-24D          |             | \$716 | \$826 | \$793 | \$793 | \$754 | \$793 |
| 742-75-F-12D        | Fail safe   | \$716 | \$826 | \$793 | \$793 | \$754 | \$793 |
| 742-75-F-24D        | Fail safe   | \$716 | \$826 | \$793 | \$793 | \$754 | \$793 |
| 742-75-12D-LBMLCM   |             | \$855 | \$966 | \$933 | \$933 | \$894 | \$933 |
| 742-75-24D-LBMLCM   |             | \$855 | \$966 | \$933 | \$933 | \$894 | \$933 |
| 742-75-F-12D-LBMLCM | Fail safe   | \$855 | \$966 | \$933 | \$933 | \$894 | \$933 |
| 742-75-F-24D-LBMLCM | Fail safe   | \$855 | \$966 | \$933 | \$933 | \$894 | \$933 |



### Faceplates

| MODEL  | 630   | 605   | 606   | 612   | 613   | 629   |
|--------|-------|-------|-------|-------|-------|-------|
| FP-742 | \$158 | \$268 | \$234 | \$234 | \$196 | \$234 |

### How to Order Complete Pacs

Specify quantity and the following information. Order related products separately.

| SERIES | FAIL SAFE/SECURE                              | VOLTAGE                    | FINISH   | OPTION(S)                                 |
|--------|---|----------------------------|--|---|
| 742-75 | - F   | - 12D                      | - 613  | - LBMLCM                                  |
| 742-75 | (blank) Fail Secure (Standard)<br>F Fail Safe | 12D 12 Volt<br>24D 24 Volt | 605 Bright Brass<br>606 Satin Brass<br>612 Satin Bronze<br>613 Bronze Toned<br>629 Bright Stainless Steel<br>630 Satin Stainless Steel | LBMLCM<br>Latchbolt & locking cam monitor |

### How to Order Faceplate Only

| PREFIX       | SERIES   | FINISH   |
|--------------|--|--|
| FP           | - 742-75   | - 630  |
| FP Faceplate | 742-75<br>Hollow metal frames, for up to a 3/4" throw latchbolt without deadbolt | 605 Bright Brass<br>606 Satin Brass<br>612 Satin Bronze<br>613 Bronze Toned<br>629 Bright Stainless Steel<br>630 Satin Stainless Steel |

### HES Folger Adam SB740-75 Electric Strike Bodies

| MODEL               | DESCRIPTION | 630   |
|---------------------|-------------|-------|
| 740-75-12D          |             | \$558 |
| 740-75-24D          |             | \$558 |
| 740-75-F-12D        | Fail safe   | \$558 |
| 740-75-F-24D        | Fail safe   | \$558 |
| 740-75-12D-LBMLCM   |             | \$698 |
| 740-75-24D-LBMLCM   |             | \$698 |
| 740-75-F-12D-LBMLCM | Fail safe   | \$698 |
| 740-75-F-24D-LBMLCM | Fail safe   | \$698 |



### How to Order

Specify quantity and the following information. Order related products separately.

| PREFIX                  | SERIES | KEEPER STYLE    | FAIL SAFE/SECURE                              | VOLTAGE                    | OPTION(S)                              |
|-------------------------|--------|-----------------|---|----------------------------|--|
| SB                      | 740-75 | (3/4)           | —   | - 24D                      | —                                      |
| <b>STRIKE BODY ONLY</b> |        |                 |   |                            |  |
| SB Strike Body          | 740-75 | 3/4 3/4" Keeper | (blank) Fail Secure (Standard)<br>F Fail Safe | 12D 12 Volt<br>24D 24 Volt | LBMLCM Latchbolt & locking cam monitor |

**700 & 742 Series | LBMLCM:** When using LBMLCM with a SARGENT 78/8200 Series or BEST 40 Series Mortise Lock, a 1/2" or 5/8" keeper latchbolt detection will be dependent on the door gap in order to ensure functionality. Consult customer support regarding use with other manufacturers.

**712-75, 732-75 and 742-75:** The LBMLCM option is compatible with SARGENT 78/8200 Series or BEST 40 Series 3/4" throw mortise lock latchbolts in hollow metal and wood frame applications. Monitoring capabilities are dependent on a maximum 1/8" door gap in order to ensure functionality. Consult customer support regarding use with other manufacturers.

## HES Electric Strike Accessories

| ITEM        | DESCRIPTION   | PRICE |
|-------------|---|-------|
| HES-CUT-MTK | For installing the 1006, 1500, 1600, 4500, 5000, 5200, 7000, and 7501 electric strikes (4-7/8" ANSI jamb preparations only).  | \$77  |
| 9000-MTK    | Metal template installation kit.  | \$79  |
| SMB         | Surface mounting box.   | \$215 |
| 150         | Stainless steel. Installed at the edge of the door to cover the lock and electric strike. Available in 626 finish only.   | \$90  |
| 152         | Mount inside hollow metal and aluminum jambs.   | \$26  |
| 157         | Torx screws.  | \$14  |
| 157D        | Tamper-Resistant Torx R20 insert bit.   | \$42  |
| 310-2-3     | Designed to prevent tampering with the latchbolt as well as the latchbolt keeper. Prevents one door from being open before the other.   | \$211 |
| 2001-1      | Converts AC to unfiltered DC. Rated 35 V, 2 Amp. Not recommended for 1006 Electric Strike.  | \$39  |
| 2001M       | Converts AC to unfiltered DC. Rated 35 V, 1 Amp. Includes MOV and self-resettable fuse. Not recommended for 1006 Electric Strike.   | \$67  |
| 2004M       | Adapter between existing HES electric strikes and ElectroLynx® connectors.  | \$41  |
| 2005M3      | In-line power controller able to receive input voltages from 12–32V AC or DC. Built-in bridge rectifier. Reduces initial voltage by 25% to extend the life of the electric strike. Includes built-in resettable fuse, MOV, voltage regulation and input voltage level indicating and unit status. Addition of Smart Pac® III to any Electric Strike extends the 5-year no-fault warranty to a 10-year no-fault warranty. For use with 1006, input voltage must be DC. | \$102 |
| 2006M       | Audible operation indicator at 24 VDC, 75 db at 11-3/4".  | \$50  |
| 2007M       | With 4" wire leads.   | \$21  |



# Electromagnetic Locks

## Securitron M380E EcoMag® 600 lbs Intelligent Magnalocks®

| MODEL           | DESCRIPTION        | 600   | 605   | 606   | 612   | 613E  | 628   | 629   | 630   | BSP   |
|-----------------|--------------------|-------|-------|-------|-------|-------|-------|-------|-------|-------|
| <b>M380EBD</b>  | BondSTAT, DPS      | \$691 | \$752 | \$752 | \$752 | \$691 | \$644 | \$752 | \$752 | \$691 |
| <b>M380EBDX</b> | BondSTAT, DPS, REX | \$855 | \$902 | \$902 | \$902 | \$855 | \$799 | \$902 | \$902 | \$855 |



### How to Order *Specify quantity and the following information. Order related products separately.*

| MODEL SERIES  | ACCESSORY OPTIONS   | FINISH OPTIONS*   |
|---|---|---|
| <b>M680E</b>  | <b>X</b>  | <b>- 606</b>  |
| <b>M380EBD</b> 600 lbs with BondSTAT Monitor & Door Position Switch | <b>(blank)</b> No Accessory Options<br><b>X</b> PIR Request to Exit | <b>628/US28</b> Satin Aluminum Clear<br><b>605/US3</b> Bright Brass<br><b>606/US4</b> Satin Brass<br><b>612/US10</b> Satin Bronze<br><b>613E</b> Dark Oxidized Satin Bronze<br><b>629</b> Bright Stainless Steel<br><b>630</b> Satin Stainless Steel<br><b>BSP</b> Black Suede Powder<br><b>WSP*</b> White Suede Powder (Coming Soon) |

## Securitron M680E EcoMag® 1,200 lbs Intelligent Magnalocks®

| MODEL           | DESCRIPTION        | 600    | 605    | 606    | 612    | 613E   | 628   | 629    | 630    | BSP    |
|-----------------|--------------------|--------|--------|--------|--------|--------|-------|--------|--------|--------|
| <b>M680E</b>    |                    |        |        |        |        |        | \$664 |        |        |        |
| <b>M680EBD</b>  | BondSTAT, DPS      | \$832  | \$833  | \$833  | \$833  | \$781  | \$729 | \$833  | \$833  | \$781  |
| <b>M680EBDX</b> | BondSTAT, DPS, REX | \$1085 | \$1085 | \$1085 | \$1085 | \$1033 | \$981 | \$1085 | \$1085 | \$1033 |



### How to Order *Specify quantity and the following information. Order related products separately.*

| MODEL SERIES             | MONITORING OPTIONS  | ACCESSORY OPTIONS   | FINISH OPTIONS*  |
|--------------------------|---|---|--|
| <b>M680E</b>             | <b>BD</b>   | <b>X</b>  | <b>- 606</b>   |
| <b>M680E</b> (1,200 lbs) | <b>(blank)</b> No Monitoring<br><b>BD</b> BondSTAT Monitor & Door Position Switch | <b>(blank)</b> No Accessory Options<br><b>X</b> PIR Request to Exit | <b>600</b> Paintable Primer Gray Finish<br><b>628/US28</b> Satin Aluminum Clear<br><b>605/US3</b> Bright Brass<br><b>606/US4</b> Satin Brass<br><b>612/US10</b> Satin Bronze<br><b>613E</b> Dark Oxidized Satin Bronze<br><b>629</b> Bright Stainless Steel<br><b>630</b> Satin Stainless Steel<br><b>BSP</b> Black Suede Powder<br><b>WSP*</b> White Suede Powder (Coming Soon) |

## Securiton iMXDa Delayed Egress

| ITEM        | DESCRIPTION                             | PRICE  |
|-------------|---|--------|
| iMXDa       | Dual Voltage, Integrated Initiation     | \$1337 |
| iMXDa-CA15S | Dual Voltage, California, 15 sec        | \$1337 |
| iMXDa-CA30S | Dual Voltage, California, 30 sec        | \$1337 |
| iMXDaCH     | Dual Voltage, Chicago                   | \$1337 |
| iMXDaH      | iMXDa for HUGS Infant Protection System | \$1337 |
| iEXDa       | Dual Voltage, External Initiation       | \$1186 |



## Delayed Egress Magnalock Accessories

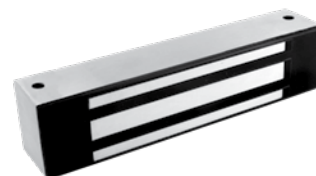
| ITEM      | DESCRIPTION  | PRICE |
|-----------|--|-------|
| BA-XDT-12 | 12 VDC Boxed Alarm & Door Label Exit Delay Timer       | \$273 |
| BA-XDT-24 | 24 VDC Boxed Alarm & Door Label Exit Delay Timer       | \$273 |
| EXD-1L    | Label & Documentation Exit Delay System                | \$24  |
| FA-XDT-12 | 12 VDC, Flush Mount with Alarm & Door Exit Delay Timer | \$273 |
| FA-XDT-24 | 24 VDC, Flush Mount with Alarm & Door Exit Delay Timer | \$273 |
| XDT-12    | 12 VDC Exit Delay Timer                                | \$180 |
| XDT-24    | 24 VDC Exit Delay Timer                                | \$180 |
| SB-MXD    | Sex Bolt Kit — Door Movement                           | \$200 |

## How to Order Specify quantity and the following information. Order related products separately.

| MODEL SERIES                | TIMING OPTIONS  |
|-----------------------------|---|
| <b>iMXDa</b>                | <b>CH</b>   |
| iMXDa Integrated Initiation | <b>(blank)</b> Adjustable Timing<br>-CA15S California Required 15s Timings  |
| iEXDa External Initiation   | -CA30S California Required 30s Timings<br><b>CH</b> Chicago Required Timings<br><b>H</b> HUGS Infant Protection Timings |

## Securiton M32 600 lbs Durable Magnalocks®

| ITEM   | DESCRIPTION   | PRICE |
|--------|---|-------|
| M32BD  | BondSTAT Monitor & Door Position Switch               | \$556 |
| M32D   | Door Position Switch                                  | \$458 |
| M32    | No Monitoring   | \$387 |
| M32B   | BondSTAT Monitor                                      | \$495 |
| M32F   | Face Drilled, No Monitoring                           | \$387 |
| M32FB  | Face Drilled, BondSTAT Monitor                        | \$495 |
| M32FBD | Face Drilled, BondSTAT Monitor & Door Position Switch | \$556 |
| M32FD  | Face Drilled, Door Position Switch                    | \$458 |



## How to Order Specify quantity and the following information. Order related products separately.

| MODEL SERIES  | MOUNTING METHOD                                      | MONITORING OPTIONS  | STRIKE PLATE OPTIONS   |
|---------------|--|---|--|
| <b>M32</b>    |  | <b>BD</b>   | <b>-SS</b>   |
| M32 (600 lbs) | <b>(blank)</b> Direct Mount<br><b>F</b> Face Drilled | <b>(blank)</b> No Monitoring<br><b>B</b> BondSTAT Monitor<br><b>D</b> Door Position Switch<br><b>BD</b> BondSTAT Monitor & Door Position Switch | <b>(blank)</b> Standard Strike<br><b>SS</b> Split Strike (Add \$120)*<br><b>SASM</b> Shock Absorbing Strike Mount (Add \$75) |

*\*D and BD monitoring options not available with (SS) Split Strike option.*

### Securitron M62 1,200 lbs Durable Magnalocks®



| ITEM    | DESCRIPTION  | PRICE |
|---------|--|-------|
| M62     | No Monitoring  | \$495 |
| M62B    | BondSTAT Monitor   | \$603 |
| M62BD   | BondSTAT Monitor & Door Position Switch                                | \$663 |
| M62D    | Door Position Switch   | \$567 |
| M62F    | Face Drilled   | \$495 |
| M62FB   | Face Drilled, BondSTAT Monitor   | \$603 |
| M62FBD  | Face Drilled, BondSTAT Monitor & Door Position Switch                  | \$663 |
| M62FD   | Face Drilled, Door Position Switch                                     | \$567 |
| M62G    | Gate Conduit   | \$522 |
| M62GB   | Gate Conduit, BondSTAT Monitor   | \$629 |
| M62GBD  | Gate Conduit, BondSTAT Monitor & Door Position Switch                  | \$691 |
| M62GD   | Gate Conduit, Door Position Switch                                     | \$595 |
| M62FG   | Face Drilled, Gate Conduit   | \$522 |
| M62FGB  | Face Drilled, Gate Conduit, BondSTAT Monitoring                        | \$629 |
| M62FGBD | Face Drilled, Gate Conduit, BondSTAT Monitoring & Door Position Switch | \$691 |
| M62FGD  | Face Drilled, Gate Conduit, Door Position Switch                       | \$595 |

#### How to Order *Specify quantity and the following information. Order related products separately.*

| MODEL SERIES  | MOUNTING METHOD  | MONITORING OPTIONS  | STRIKE PLATE OPTIONS   |
|---------------|--|---|--|
| <b>M62</b>    | <b>FG</b>  | <b>BD</b>   | <b>-SS</b>   |
| M62 (600 lbs) | (blank) Direct Mount<br>F Face Drilled<br>G Gate Conduit | (blank) No Monitoring<br>B BondSTAT Monitor<br>D Door Position Switch<br>BD BondSTAT Monitor & Door Position Switch | (blank) Standard Strike<br>OS Offset Strike<br>SS Split Strike (Add \$96)*<br>SASM Shock Absorbing Strike Mount (Add \$75) |

*\*D and BD monitoring options not available with (SS) Split Strike option.*

### Securitron M82 1,800 lbs Durable Magnalocks®



| ITEM    | DESCRIPTION   | PRICE |
|---------|---|-------|
| M82B    | BondSTAT Monitor  | \$694 |
| M82BD   | BondSTAT Monitor & Door Position Switch                             | \$756 |
| M82FB   | Face Drilled, BondSTAT Monitor                                      | \$694 |
| M82FBD  | Face Drilled, BondSTAT Monitor & Door Position Switch               | \$756 |
| M82GB   | Gate Conduit, BondSTAT Monitor                                      | \$723 |
| M82GBD  | Gate Conduit, BondSTAT Monitor & Door Position Switch               | \$783 |
| M82FGB  | Face Drilled, Gate Conduit, BondSTAT Monitor                        | \$723 |
| M82FGBD | Face Drilled, Gate Conduit, BondSTAT Monitor & Door Position Switch | \$783 |

#### How to Order *Specify quantity and the following information. Order related products separately.*

| MODEL SERIES  | MOUNTING METHOD  | MONITORING OPTIONS   | STRIKE PLATE OPTIONS  |
|---------------|--|--|---|
| <b>M82</b>    | <b>FG</b>  | <b>BD</b>  | <b>-SS</b>  |
| M82 (600 lbs) | (blank) Direct Mount<br>F Face Drilled<br>G Gate Conduit | B BondSTAT Monitor<br>BD BondSTAT Monitor & Door Position Switch | (blank) Standard Strike<br>OS Offset Strike<br>SS Split Strike (Add \$121)*<br>SASM Shock Absorbing Strike Mount (Add \$75) |

*\*D and BD monitoring options not available with (SS) Split Strike option.*

## Securiton ASB Aluminum Frame Spacer Bracket

| MODEL  | DESCRIPTION | BK   | CL   |
|--------|-------------|------|------|
| ASB-32 | For M32     | \$66 | \$49 |
| ASB-62 | For M62     | \$66 | \$49 |
| ASB-82 | For M82     | \$92 | \$79 |

## Securiton CWB Concrete/Wood Bracket

| MODEL  | DESCRIPTION | BK   | CL   |
|--------|-------------|------|------|
| CWB-32 | For M32     | \$73 | \$62 |
| CWB-62 | For M62     | \$66 | \$70 |
| CWB-82 | For M82     | \$99 | \$87 |

## Securiton ZA Adjustable Z-Bracket

| MODEL        | DESCRIPTION     | BK    | CL    | SS    |
|--------------|-----------------|-------|-------|-------|
| ZA-32, ZA-62 | For M32 and M62 | \$185 | \$174 | \$196 |
| ZA-82        | For M82         | \$224 | \$209 | \$235 |

### How to Order *Specify quantity and the following information. Order related products separately.*

| BRACKET TYPE                      | MODEL SERIES | STRIKE PLATE OPTIONS |
|-----------------------------------|--------------|----------------------|
| <b>ASB</b>                        | <b>-32</b>   | <b>BK</b>            |
| ASB Aluminum Frame Spacer Bracket | 32           | BK Black Anodized    |
| CWB Concrete/Wood Bracket         | 62           | CL Clear Anodized    |
| ZA Adjustable Z-Bracket           | 82           | SS Satin Stainless   |

## Securiton M32, M62, M82 Lock Housing

| MODEL | DESCRIPTION                               | 630   |
|-------|---|-------|
| HHD   | Double Horizontal                         | \$941 |
| HHSL  | Single Horizontal with Left Hand Reverse  | \$782 |
| HHSR  | Single Horizontal with Right Hand Reverse | \$782 |
| HVD   | Double Vertical                           | \$951 |

### How to Order

*Specify quantity and the following information. Order related products separately.*

| HOUSING TYPE | MODEL SERIES | SPECIFY LENGTH (NOT USED IN PART NUMBER) |
|--------------|--------------|--|
| <b>HHD</b>   | <b>- 32</b>  | <b>(83")</b>                             |
| HHD          | 32           | HHD Max Length 96"                       |
| HHSL         | 62           | HHSL Max Length 48"                      |
| HHSR         | 82           | HHSR Max Length 48"                      |
| HVD          |              | HVD Max Length 96"                       |

## Securiton M32, M62, M82 Dress Covers

| MODEL  | DESCRIPTION      | BK   | BP    | CL   | SP    |
|--------|------------------|------|-------|------|-------|
| DC-32  | For M32          | \$48 | \$122 | \$48 | \$122 |
| DC-62  | For M62          | \$48 | \$122 | \$48 | \$122 |
| DC-82  | For M82          | \$53 | \$128 | \$53 | \$128 |
| DDC-32 | Double — For M32 | \$77 |       | \$77 |       |
| DDC-62 | Double — For M62 | \$77 |       | \$77 |       |

### How to Order

*Specify quantity and the following information. Order related products separately.*

| DRESS COVER   | MODEL       | FINISH                |
|---|-------------|-----------------------|
| <b>DC</b>   | <b>- 32</b> | <b>BK</b>             |
| DC Dress Cover  | 32          | BK Black Anodized     |
| DDC Double Dress Cover (available in models 32 & 62 in BK and CL finishes only) | 62          | BP Brass Polished     |
|   | 82          | CL Clear Anodized     |
|   |             | SP Stainless Polished |

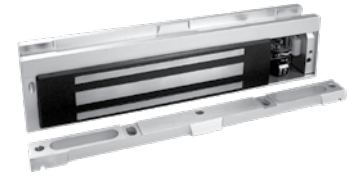
## Securiton M32, M62, M82 Accessories

| ITEM     | DESCRIPTION  | PRICE |
|----------|--|-------|
| AOS-62   | Offset Strike Plate for M62                                | \$130 |
| AOS-62D  | Offset Strike Plate for M62D                               | \$160 |
| AOS-82   | Offset Strike Plate for M82                                | \$170 |
| APS-32   | Strike Plate for M32                                       | \$122 |
| APS-62   | Strike Plate for M62                                       | \$136 |
| APS-82   | Strike Plate for M82                                       | \$159 |
| ASS-32   | Strike Plate for M32 — Split Set with Fasteners & Sex Bolt | \$168 |
| ASS-62   | Strike Plate for M62 — Split Set with Fasteners & Sex Bolt | \$194 |
| ASS-82   | Strike Plate for M82 — Split Set with Fasteners & Sex Bolt | \$216 |
| EASB-250 | Energy Absorbing Bolt — 1/4" Spacer Kit                    | \$48  |
| EASB-32  | Energy Absorbing Sex Bolt for M32                          | \$275 |

| ITEM     | DESCRIPTION                                    | PRICE |
|----------|--|-------|
| EASB-62  | Energy Absorbing Sex Bolt for M62              | \$368 |
| EASB-82  | Energy Absorbing Sex Bolt for M82              | \$368 |
| SASM     | Shock Absorbing Strike Mount for M32, M62, M82 | \$75  |
| SB-1     | Sex Bolt Replacement, Clear                    | \$13  |
| SB-1-03  | Sex Bolt Replacement, Polished Brass           | \$34  |
| SB-1-10B | Sex Bolt Replacement, Oil-Rubbed Bronze        | \$34  |
| TDK-1    | Thick Door Kit                                 | \$31  |

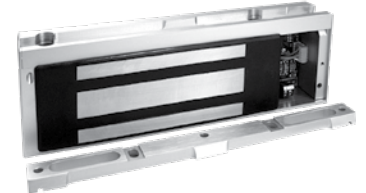
### Securitron M38 600 lbs Durable Magnalocks®

| ITEM    | DESCRIPTION                          | PRICE |
|---------|--------------------------------------|-------|
| M38     | 12/24 VDC                            | \$430 |
| M38D    | 12/24 VDC, DPS                       | \$501 |
| M38DL   | 12/24 VDC, DPS, LED                  | \$532 |
| M38DLS  | 12/24 VDC, DPS, LED, Senstat         | \$601 |
| M38DLST | 12/24 VDC, DPS, LED, Senstat, Tamper | \$654 |
| M38DS   | 12/24 VDC, DPS, Senstat              | \$572 |
| M38S    | 12/24 VDC, Senstat                   | \$487 |



### Securitron M68 1,200 lbs Durable Magnalocks®

| ITEM    | DESCRIPTION                          | PRICE |
|---------|--------------------------------------|-------|
| M68D    | 12/24 VDC, DPS                       | \$607 |
| M68DL   | 12/24 VDC, DPS, LED                  | \$637 |
| M68DLS  | 12/24 VDC, DPS, LED, Senstat         | \$707 |
| M68DLST | 12/24 VDC, DPS, LED, Senstat, Tamper | \$760 |
| M68DS   | 12/24 VDC, DPS, Senstat              | \$677 |
| M68S    | 12/24 VDC, Senstat                   | \$607 |
| M68     | 12/24 VDC                            | \$537 |



### Accessories

| ITEM    | DESCRIPTION                              | PRICE |
|---------|--|-------|
| DC-38SP | Stainless Polished Dress Cover for M38   | \$122 |
| DC-68SP | Stainless Polished Dress Cover for M68   | \$122 |
| TJ-38CL | Clear Anodized In-Swing Door Kit for M38 | \$206 |
| TJ-68CL | Clear Anodized In-Swing Door Kit for M68 | \$206 |

### How to Order

Specify quantity and the following information. Order related products separately.

| MODEL SERIES    | MONITORING OPTIONS            |
|-----------------|-------------------------------|
| <b>M38</b>      | <b>DLST</b>                   |
| M38 (600lbs)    | <b>(blank)</b> No Monitoring  |
| M68 (1,200 lbs) | <b>D</b> Door Position Switch |
|                 | <b>L</b> LED Indicator        |
|                 | <b>S</b> Senstat Monitor      |
|                 | <b>T</b> Tamper Monitor       |

### Header Extension Brackets

| MODEL      | DESCRIPTION                 | BK   | CL   |
|------------|-----------------------------|------|------|
| HEB-1xx-12 | 1" x 1" x 12"               | \$65 | \$50 |
| HEB-1xx-8  | 1" x 1" x 8"                | \$55 | \$46 |
| HEB-2xx-12 | 2" x 2" x 12"               | \$74 | \$66 |
| HEB-2xx-8  | 2" x 2" x 8"                | \$72 | \$60 |
| HEB-3G     | 3" x 3" x 8" for Glass Door | \$89 |      |
| HEB-3xx-12 | 3" x 3" x 12"               | \$93 | \$78 |
| HEB-3xx-8  | 3" x 3" x 8"                | \$83 | \$74 |

### How to Order

Specify quantity and the following information. Order related products separately.

| MODEL                | SIZE      | FINISH            | SIZE      |
|----------------------|-----------|-------------------|-----------|
| <b>HEB</b>           | <b>-1</b> | <b>BK</b>         | <b>-8</b> |
| HEB Header Extension | 1 1" x 1" | BK Black Anodized | 8         |
|                      | 2 2" x 2" | CL Clear Anodized | 12        |
|                      | 3 3" x 3" |                   |           |

### Universal Header Brackets

| MODEL     | DESCRIPTION        | BK    | CL    |
|-----------|--------------------|-------|-------|
| UHB-xx-12 | 12" Header Bracket | \$133 | \$117 |
| UHB-xx-8  | 8" Header Bracket  | \$96  | \$82  |

### How to Order

Specify quantity and the following information. Order related products separately.

| MODEL                          | FINISH            | SIZE      |
|--------------------------------|-------------------|-----------|
| <b>UHB</b>                     | <b>BK</b>         | <b>-8</b> |
| UHB Universal Header Extension | BK Black Anodized | 8"        |
|                                | CL Clear Anodized | 12"       |

### Stop Filler Plates

| MODEL         | DESCRIPTION         | BK   | CL   |
|---------------|---------------------|------|------|
| SFP-1/2-xx-12 | 1/2" x 1-1/4" x 12" | \$45 | \$34 |
| SFP-1/2-xx-8  | 1/2" x 1-1/4" x 8"  | \$41 | \$30 |
| SFP-1/4-xx-12 | 1/4" x 1-1/4" x 12" | \$45 | \$34 |
| SFP-3/8-xx-12 | 3/8" x 1-1/4" x 12" | \$45 | \$35 |
| SFP-3/8-xx-8  | 3/8" x 1-1/4" x 8"  | \$41 | \$31 |
| SFP-5/8-xx-12 | 5/8" x 1-1/4" x 12" | \$47 | \$36 |
| SFP-5/8-xx-8  | 5/8" x 1-1/4" x 8"  | \$41 | \$33 |
| SPF-1/4-xx-8  | 1/4" x 1-1/4" x 8"  | \$41 | \$31 |

### How to Order

Specify quantity and the following information. Order related products separately.

| MODEL                 | SIZE                         | FINISH                                 | SIZE      |
|-----------------------|------------------------------|--|-----------|
| <b>SFP</b>            | <b>-1/2</b>                  | <b>BK</b>                              | <b>-8</b> |
| SFP Stop Filler Plate | 1/2"<br>1/4"<br>3/8"<br>5/8" | BK Black Anodized<br>CL Clear Anodized | 8"<br>12" |

### Additional Accessories

| ITEM     | DESCRIPTION   | PRICE |
|----------|---|-------|
| AKG      | Adhesive Kit for GDB  | \$182 |
| DCP-12x3 | Dress Cover Plate, 12" x 3" for larger strikes (M380, M680) | \$36  |
| GDB      | Glass Door Bracket  | \$75  |
| IK       | Installation Kit  | \$548 |

### Securitron DM62 Double 1,200 lbs Durable Magnalocks

| ITEM   | DESCRIPTION         | PRICE  |
|--------|---------------------|--------|
| DM62   | 12/24 VDC           | \$1039 |
| DM62B  | 12/24 VDC, MBS      | \$1266 |
| DM62D  | 12/24 VDC, DPS      | \$1195 |
| DM62BD | 12/24 VDC, MBS, DPS | \$1397 |



### Accessories

| ITEM         | DESCRIPTION   | PRICE |
|--------------|---|-------|
| ASCWB-DM62CL | Alum 1-1/2" Spacer — Concrete/Wood Bracket, DM62, Clear | \$182 |

### How to Order

Specify quantity and the following information. Order related products separately.

| MODEL SERIES | MONITORING OPTIONS  | STRIKE PLATE OPTIONS                        |
|--------------|---|---|
| <b>DM62</b>  | <b>BD</b>   | <b>- OS</b>                                 |
| DM62         | (blank) No Monitoring<br>B BondSTAT Monitor<br>D Door Position Switch | (blank) Standard Strike<br>OS Offset Strike |

### Securitron M34R 500 lbs. Recessed Magnalock

| ITEM   | DESCRIPTION                   | PRICE |
|--------|-------------------------------|-------|
| M34R   | 12/24 VDC, Recessed           | \$425 |
| M34RB  | 12/24 VDC, Recessed, MBS      | \$537 |
| M34RD  | 12/24 VDC, Recessed, DPS      | \$502 |
| M34RBD | 12/24 VDC, Recessed, MBS, DPS | \$600 |



### How to Order

Specify quantity and the following information. Order related products separately.

| MODEL SERIES   | MONITORING OPTIONS  |
|----------------|---|
| <b>M34R</b>    | <b>BD</b>   |
| M34R (500 lbs) | (blank) No Monitoring<br>B BondSTAT Monitor<br>D Door Position Switch |

### Securitron SAM 1,200 lbs. Shear Aligning Magnalocks

| ITEM  | DESCRIPTION                        | PRICE  |
|-------|------------------------------------|--------|
| SAM   | 12/24 VDC, Self Aligning           | \$966  |
| SAMB  | 12/24 VDC, Self Aligning, MBS      | \$1052 |
| SAMD  | 12/24 VDC, Self Aligning, DPS      | \$1029 |
| SAMBD | 12/24 VDC, Self Aligning, MBS, DPS | \$1112 |
| SAMN  |                                    | \$975  |



### Securitron SAM-24 600 lbs. Mini Shear Magnalock

| ITEM     | DESCRIPTION         | PRICE |
|----------|---------------------|-------|
| SAM2-24  | 24 VDC              | \$762 |
| SAM2C-24 | 24 VDC, Bond Sensor | \$723 |



### Accessories

| ITEM    | DESCRIPTION                          | PRICE |
|---------|--------------------------------------|-------|
| SWB-03  | SAM Wood Bracket — Brass Polished    | \$172 |
| SWB-10B | SAM Wood Bracket — Oil Rubbed Bronze | \$134 |
| SWB-26D | SAM Wood Bracket — Satin Stainless   | \$101 |
| SMLS    | Surface Mount Housing Lock — Shear   | \$187 |
| SMSS    | Surface Mount Housing Strike — Shear | \$181 |

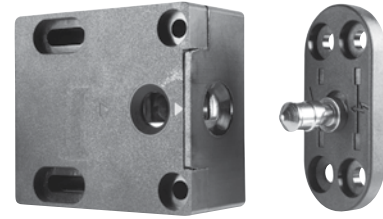
### How to Order *Specify quantity and the following information. Order related products separately.*

| MODEL SERIES    | MONITORING OPTIONS            | VOLTAGE   |
|-----------------|-------------------------------|---|
| <b>SAM2</b>     | <b>C</b>                      | <b>- 24</b>                                       |
| SAM2 (600 lbs)  | <b>(blank)</b> No Monitoring  | <b>24</b> 24 VDC Only                             |
| SAM (1,200 lbs) | <b>B</b> BondSTAT Monitor     | <b>(blank)</b> Autosensing dual voltage 12/24 VDC |
|                 | <b>C</b> Bond Sensor          |   |
|                 | <b>D</b> Door Position Switch |   |

# Cabinet Locks

## HES 610 Multi-Purpose Electromechanical Lock

| ITEM  | DESCRIPTION              | PRICE |
|-------|--------------------------|-------|
| 610   | Standard — No Monitoring | \$124 |
| 610LM | Locked State Monitoring  | \$172 |



### How to Order *Specify quantity and the following information. Order related products separately.*

| SERIES           | OPTION(S)   |
|------------------|---|
| 610              | – LM  |
| 610 Cabinet Lock | (blank) No Monitoring<br>LM Locked State Monitoring |

## HES 660 Multi-Purpose Electromechanical Lock

| MODEL            | BLK    |
|------------------|--------|
| 660              | \$152  |
| 660-LBSM         | \$188  |
| 660-LBSM-20PK    | \$3760 |
| 660-LBSM-Preload | \$258  |
| 660-Preload      | \$226  |



### Accessories

| ITEM   | DESCRIPTION      | PRICE |
|--------|------------------|-------|
| 660-KO | 660 Key override | \$84  |

### How to Order *Specify quantity and the following information. Order related products separately.*

| SERIES           | VOLTAGE                    | OPTION(S)   |
|------------------|----------------------------|---|
| 660              | – 12V                      | – LBSM – Preload  |
| 660 Cabinet Lock | 12V 12 Volt<br>24V 24 Volt | (blank) No preload, no monitoring<br>Preload Up to 15 lbs<br>LBSM Locked state monitoring<br>LBSM-20PK Locked state monitoring 20 pack<br>LBSM-Preload Locked state monitoring with Preload |

## HES K20 Series Cabinet Lock

| MODEL | DESCRIPTION                             | BLK   |
|-------|---|-------|
| K20   | Stand-alone 13.56 MHz RFID Cabinet Lock | \$175 |



## HES KP20 Series Cabinet Lock

| MODEL | DESCRIPTION                     | BLK   |
|-------|---------------------------------|-------|
| KP20  | Stand-alone Keypad Cabinet Lock | \$155 |





## HES K100 Aperio® Factory Paired Cabinet Lock with AH20 Wiegand Hub

| ITEM             | DESCRIPTION       | PRICE |
|------------------|-------------------|-------|
| K100-622H-IPS-BP | Black, Pinch Knob | \$897 |

## HES K100 Demo Mounts

| MODEL            | DESCRIPTION          | BK     |
|------------------|----------------------|--------|
| K100 Demo Mounts | Mounted Demo, iClass | \$1025 |

## Accessories

| ITEM    | DESCRIPTION                     | PRICE |
|---------|---------------------------------|-------|
| OBS-622 | K Series Open Back Strike Plate | \$26  |



## How to Order *Specify quantity and the following information. Order related products separately.*

| SERIES | MODEL   | CREDENTIAL TECHNOLOGY  | COLOR   | KNOB TYPE          | SHAFT LENGTH (DOOR THICKNESS)   |
|--------|---|--|---------|--------------------|---|
| K100   | - 622   | - IPS  | - B     | P                  | 2   |
|        | 622H* Factory Paired* for Doors with AH20 1:1 Wiegand Hub | IPS HID Prox®, Kantech ioProx, HID iCLASS®, HID iCLASS SE® (SIOenabled), HID iCLASS® Seos™, HID MIFARE® SE, HID DESFire® EV1 SE, MIFARE Classic, MIFARE DESFire EV1, NFC-enabled mobile phones | B Black | P Pinch<br>L Lever | _(Blank) 1/16" to 1/2" (standard)<br>2 ≥ 1/2" to 1-1/2"<br>3 ≥ 1-1/2" to 2-1/4" |

\*Kit includes integrated lock paired with Wiegand 1:1 wireless hub.

**HES K100:** The HES K100 Cabinet Lock is available as either a pre-paired lock and hub kit (no certification required) or as a field configurable component (requires Aperio® Certified Integrator certification). Pre-paired kits support limited features. Field configured devices are required in order to support all options. Visit [www.IntelligentOpenings.com](http://www.IntelligentOpenings.com) to learn more.

## HES K200 Series Wiegand Cabinet Lock

| ITEM        | DESCRIPTION                              | PRICE |
|-------------|--|-------|
| K200-622-B2 | Wiegand, MultiCLASS Reader, Black, Pinch | \$625 |



## HES KS200 Series Server Cabinet Lock

| ITEM      | DESCRIPTION                   | PRICE |
|-----------|-------------------------------|-------|
| KS200-640 | Wiegand, MultiCLASS SE, Black | \$575 |



## Accessories

| ITEM       | DESCRIPTION  | PRICE |
|------------|--|-------|
| OBS-622    | K Series Open Back Strike Plate  | \$26  |
| CBL6-QC12  | Lock Side Interface Cable: 6 Foot, 12 Conductor and Molex both ends                  | \$50  |
| CBL12-QC12 | System Side Interface Cable: 12 Foot, 12 Conductor and Molex one end, pinned one end | \$69  |
| SFIC       | MEDECO X4 (2 Keys—1 Control, 1 User)   | \$87  |
| SFIC-BC    | KS SFIC Blank, Black Plastic Core  | \$4   |
| KS-DPS     | Surface Mount DPS (external)   | \$20  |
| KS-CAM45   | CAM: 45MM—5  | \$4   |
| KS-CAM38   | CAM: 38MM—1  | \$4   |
| WT-1       | Wiegand Test Box with LED Indicators   | \$400 |
| WT-2       | Wiegand Test Box with LCD Backlit Display with LED Indicators                        | \$500 |

## Securitron MCL 180 lbs Cabinet Magnalock

| ITEM   | DESCRIPTION | PRICE |
|--------|-------------|-------|
| MCL-24 | 24 VDC      | \$248 |



## Securitron M32-SS 600 lbs Cabinet Magnalock

| ITEM    | DESCRIPTION         | PRICE |
|---------|---------------------|-------|
| M32-SS  | No monitoring       | \$504 |
| M32B-SS | BondSTAT monitoring | \$612 |



# Specialty Locks

## Securiton GL1 Specialty Gate Locks

| ITEM    | DESCRIPTION                                 | PRICE |
|---------|---|-------|
| GL1-FL  | Gate Lock, 12/24 VDC, Standard Fail Locked  | \$387 |
| GL1-FLM | Gate Lock, 12/24 VDC, Fail Locked Monitored | \$398 |
| GL1-FS  | Gate Lock, 12/24 VDC, Standard Fail Safe    | \$387 |
| GL1-FSM | Gate Lock, 12/24 VDC, Fail Safe Monitored   | \$398 |



## Accessories

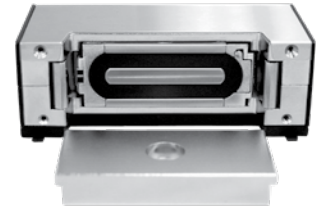
| ITEM   | DESCRIPTION  | PRICE |
|--------|--|-------|
| FMB9-4 | Post Shim Kit for Flex Mount Brackets — (Set of 4)       | \$26  |
| FMK-SL | Flex Mount Kit for Sliding Gate                          | \$121 |
| FMK-SW | Flex Mount Kit for Swinging Gate                         | \$150 |
| GMC    | Gate Lock Mortise Cylinder (for use with FL Models only) | \$42  |

## How to Order Specify quantity and the following information. Order related products separately.

| MODEL SERIES | LOCK FAIL STATE  | MONITORING OPTIONS                                 |
|--------------|--|--|
| <b>GL1</b>   | <b>- FS</b>  |  |
| <b>GL1</b>   | <b>FL</b> Fail Locked (Fail Secure)<br><b>FS</b> Fail Safe | <b>(blank)</b> No Monitoring<br><b>M</b> Monitored |

## Securiton MM15 Specialty Electromechanical Magnalock

| ITEM    | DESCRIPTION                                      | PRICE |
|---------|--|-------|
| MM15    | 12/24V, AC/DC                                    | \$495 |
| MM15DT  | 12/24 V, AC/DC, DPS, Tamper Switch               | \$606 |
| MM15G   | 12/24V, AC/DC, Gate Conduit                      | \$550 |
| MM15GDT | 12/24 V, AC/DC, Gate Conduit, DPS, Tamper Switch | \$637 |



## How to Order Specify quantity and the following information. Order related products separately.

| MODEL SERIES | MOUNTING METHOD                                      | MONITORING OPTIONS   |
|--------------|--|--|
| <b>MM15</b>  | <b>G</b>   | <b>DT</b>  |
| <b>MM15</b>  | <b>(blank)</b> Direct Mount<br><b>G</b> Gate Conduit | <b>(blank)</b> No Monitoring<br><b>DT</b> Door Position Switch and Tamper Switch |

## Brackets

| MODEL         | DESCRIPTION                 | BK    | CL   |
|---------------|-----------------------------|-------|------|
| HEB-1xx-MM15  | 1" Header Extension Bracket | \$54  | \$42 |
| HEB-2xx-MM15  | 2" Header Extension Bracket | \$54  | \$42 |
| HEB-3xx-MM15  | 3" Header Extension Bracket | \$54  | \$42 |
| SFP-1/2xxMM15 | 1/2" Stop Filler Plate      | \$46  | \$34 |
| SFP-3/8xxMM15 | 3/8" Stop Filler Plate      | \$46  | \$34 |
| SFP-5/8xxMM15 | 5/8" Stop Filler Plate      | \$48  | \$36 |
| Z-MM15        | Z-Bracket                   | \$130 |      |

## Dress Cover

| MODEL   | BK   | BP    | BS    |
|---------|------|-------|-------|
| DC-MM15 | \$44 | \$113 | \$122 |

## Tamper Shield

| ITEM    | PRICE |
|---------|-------|
| MM15-TS | \$45  |

## How to Orders

Specify quantity and the following information. Order related products separately.

| MODEL                               | SIZE   | FINISH   |
|-------------------------------------|--|--|
| <b>HEB</b>                          | <b>-1</b>  | <b>BK-MM15</b>                                       |
| <b>HEB</b> Header Extension         | <b>1</b> 1" x 1"<br><b>2</b> 2" x 2"<br><b>3</b> 3" x 3"             | <b>BK</b> Black Anodized<br><b>CL</b> Clear Anodized |
| MODEL                               | FINISH   |  |
| <b>DC-MM15</b>                      | <b>BK</b>  |  |
| <b>DC-MM15</b> Dress Cover for MM15 | <b>BK</b> Black<br><b>BP</b> Brass Polished<br><b>BS</b> Brass Satin |  |
| MODEL                               | SIZE   | FINISH   |
| <b>SFP</b>                          | <b>-1/2</b>  | <b>BK</b>  |
| <b>SFP</b> Stop Filler Plate        | <b>1/2"</b><br><b>3/8"</b><br><b>5/8"</b>                            | <b>BK</b> Black Anodized<br><b>CL</b> Clear Anodized |

# Keypads & Card Readers

## Securiton DK-12 Stand Alone Keypad

| ITEM  | DESCRIPTION   | PRICE |
|-------|---|-------|
| DK-12 | Digital Keypad System with Illuminated keys — Single Gang | \$201 |



## Securiton DK-16 Keypad System

| ITEM   | DESCRIPTION                                 | PRICE |
|--------|---|-------|
| DK-16  | Keypad and Controller — Indoor, Single Gang | \$426 |
| DK-16P | Keypad only — Indoor, Single Gang           | \$211 |



## Securiton DK-26 Keypad Systems

| MODEL  | DESCRIPTION                          | BK    | SS    |
|--------|--------------------------------------|-------|-------|
| DK-26  | Keypad and Controller — Narrow Stile | \$448 | \$437 |
| DK-26P | Keypad only — Narrow Stile           | \$233 | \$222 |



## Securiton DK-37 Wiegand Keypads

| MODEL  | DESCRIPTION                      | BK    | SS    |
|--------|----------------------------------|-------|-------|
| DK-37W | Narrow Stile with Wiegand Output | \$240 | \$229 |



### How to Order

Specify quantity and the following information. Order related products separately.

| MODEL SERIES | SPECIAL FEATURE | FINISH                                  |
|--------------|-----------------|---|
| DK-26        | P               | BK                                      |
| DK-26 Keypad | P Keypad only   | BK Black Anodized<br>SS Stainless Steel |

### How to Order

Specify quantity and the following information. Order related products separately.

| MODEL SERIES | OUTPUT           | FINISH                                  |
|--------------|------------------|---|
| DK-37        | W                | BK                                      |
| DK-37 Keypad | W Wiegand Output | BK Black Anodized<br>SS Stainless Steel |

## Securiton DK-38 Wiegand Keypads

| MODEL  | DESCRIPTION                     | SS    |
|--------|---------------------------------|-------|
| DK-38W | Single Gang with Wiegand Output | \$229 |



### Accessories

| ITEM | DESCRIPTION                                  | PRICE |
|------|--|-------|
| WBB  | Wall Mounted, Weatherized, Single Gang Box   | \$40  |
| WCC  | Wall Mounted, Weather Cover, Single Gang Box | \$55  |

## Securiton R100 Aperio® Card Reader Factory Paired with Wiegand Hub

| MODEL     | DESCRIPTION                   | BLK   |
|-----------|-------------------------------|-------|
| R100-IPS  | Aperio Reader                 | \$499 |
| R100H-IPS | Aperio Reader with Paired Hub | \$790 |



### Accessories

| ITEM     | DESCRIPTION     | PRICE |
|----------|-----------------|-------|
| R100-DPK | Dress plate kit | \$30  |

### How to Order

Specify quantity and the following information. Order related products separately.

| SERIES | MODEL  | CARD TECHNOLOGY   | COLOR   |
|--------|--|---|---------|
| R100   | H  | – IPS   | – B     |
|        | (Blank) Non-Paired<br>H Factory Paired with AH20 1:1 Wiegand Hub | IPS HID Prox®, Kantech ioProx, HID iCLASS®, HID iCLASS SE® (SIO-enabled), HID iCLASS® Seos™, HID MIFARE® SE, HID DESFire® EV1 SE, MIFARE Classic, MIFARE DESFire EV1, NFC-enabled mobile phones | B Black |

\*Kit includes integrated lock paired with Wiegand 1:1 wireless hub

# Push Buttons & Egress Devices

## Securitron XMS Request to Exit Motion Sensor

| ITEM | DESCRIPTION                             | PRICE |
|------|---|-------|
| XMS  | Passive Infrared Request to Exit Device | \$241 |



## Securitron EEB Emergency Exit Push Buttons

| ITEM  | DESCRIPTION  | PRICE |
|-------|--|-------|
| EEB2  | Momentary, SPST, Single Gang, Green/Red/Blue/Handicap, 30 Sec. Timer | \$152 |
| EEB3N | Momentary, SPST, Narrow, SPST, Green/Red, 30 Sec. Timer              | \$152 |



## Accessories

| ITEM   | DESCRIPTION   | PRICE |
|--------|---|-------|
| PB2-LK | 2" Button, Illumination Kit for PB2E, PB5E, EEB2 Series Push Button | \$31  |
| PB3-LK | Illumination Kit, Green/Red for PB3E/EEB3N Series                   | \$31  |
| WBB    | Wall Mounted, Weatherized, Single Gang Box                          | \$40  |
| WCC    | Wall Mounted, Weather Cover, Single Gang Box                        | \$55  |

## How to Order *Specify quantity and the following information. Order related products separately.*

| MODEL SERIES     | LED LENS COLOR                        | MOUNTING METHOD                       |
|------------------|---------------------------------------|---------------------------------------|
| <b>EEB</b>       | <b>3</b>                              | <b>N</b>                              |
| EEB Push Buttons | 2 Green/ Red/ Handicap<br>3 Green/Red | (blank) Single Gang<br>N Narrow Stile |

**NOTE:** Not every combination above is possible. Please contact the factory if you need a combination of features not listed on this page.

## Securitron PB Exit Push Buttons

| ITEM | DESCRIPTION  | PRICE |
|------|--|-------|
| PB   | 1 1/2" button, Illuminated, Momentary, DPST, Single Gang, Green/Red Lens | \$168 |
| PBA  | 1 1/2" button, Illuminated, Alternate, DPST, Single Gang, Green/Red Lens | \$168 |



## Accessories

| ITEM | DESCRIPTION                                  | PRICE |
|------|--|-------|
| WBB  | Wall Mounted, Weatherized, Single Gang Box   | \$40  |
| WCC  | Wall Mounted, Weather Cover, Single Gang Box | \$55  |

## How to Order *Specify quantity and the following information. Order related products separately.*

| MODEL SERIES   | SWITCH TYPE                                    |
|----------------|--|
| <b>PB</b>      | <b>A</b>                                       |
| PB Push Button | (blank) Momentary Switch<br>A Alternate Switch |

## Securitron PB2 Exit Push Buttons

| ITEM | DESCRIPTION  | PRICE |
|------|--|-------|
| PB2  | 2" Button, Illuminated, Momentary, Single Gang, Green/Red/Handicap           | \$108 |
| PB22 | 2" Button, Illuminated, Momentary, DPDT, Single Gang, Green/Red/Handicap     | \$168 |
| PB2E | 2" Button, Non-Illuminated, Momentary, Single Gang, SPDT, Green/Red/Handicap | \$77  |

### Accessories

| ITEM   | DESCRIPTION   | PRICE |
|--------|---|-------|
| PB2-LK | 2" Button, Illumination Kit for PB2E, PB5E, EEB2 Series Push Button | \$31  |
| WBB    | Wall Mounted, Weatherized, Single Gang Box                          | \$40  |
| WCC    | Wall Mounted, Weather Cover, Single Gang Box                        | \$55  |

### How to Order Specify quantity and the following information. Order related products separately.

| MODEL SERIES    | ILLUMINATION                             | SWITCH PULL/THROW  |
|-----------------|--|--|
| <b>PB2</b>      |  | <b>2</b>   |
| PB2 Push Button | (blank) Illuminated<br>E Non-Illuminated | (blank) Single Pole, Double Throw<br>2 Double Pole, Double Throw |

NOTE: Not every combination above is possible. Please contact the factory if you need a combination of features not listed on this page.



## Securitron PB3 Push Buttons

| ITEM   | DESCRIPTION  | PRICE |
|--------|--|-------|
| PB3    | 3/4" Rectangle Button, Illuminated, Momentary, DPST/DPDT, Single Gang, Green/Red Lens              | \$116 |
| PB3A   | 3/4" Rectangle Button, Illuminated, Alternate, DPST/DPDT, Single Gang, Green/Red Lens              | \$116 |
| PB3E   | 3/4" Rectangle Button, Non-Illuminated, Momentary, DPST/DPDT, Single Gang, Green/Red Lens          | \$86  |
| PB3EA  | 3/4" Rectangle Button, Non-Illuminated, Alternate, DPST/DPDT, Single Gang, Green/Red Lens          | \$86  |
| PB3AN  | 3/4" Rectangle Button, Illuminated, Alternate, DPST/DPDT, Narrow, Green/Red Lens                   | \$116 |
| PB3N   | 3/4" Rectangle Button, Illuminated, Momentary, DPST/DPDT, Narrow, Green/Red Lens                   | \$116 |
| PB3EAN | 3/4" Rectangle Button, Non-Illuminated, Alternate, DPST/DPDT, Narrow, Green/Red Lens               | \$86  |
| PB3EN  | 3/4" Rectangle Button, Non-Illuminated, Momentary, DPST/DPDT, Narrow, Green/Red Lens               | \$86  |
| PB3EAR | 3/4" Rectangle Button, Non-Illuminated, Remote, Alternate, DPST/DPDT, Surface Mount Green/Red Lens | \$86  |
| PB3ER  | 3/4" Rectangle Button, Non-Illuminated, Remote, Momentary, DPST/DPDT, Surface Mount Green/Red Lens | \$86  |

### Accessories

| ITEM   | DESCRIPTION                                       | PRICE |
|--------|---|-------|
| PB3-LK | Illumination Kit, Green/Red for PB3E/EEB3N Series | \$31  |
| WBB    | Wall Mounted, Weatherized, Single Gang Box        | \$40  |
| WCC    | Wall Mounted, Weather Cover, Single Gang Box      | \$55  |

### How to Order Specify quantity and the following information. Order related products separately.

| MODEL SERIES    | ILLUMINATION                             | SWITCH TYPE                                    | MOUNTING METHOD   |
|-----------------|--|--|---|
| <b>PB3</b>      | <b>E</b>                                 | <b>A</b>                                       | <b>N</b>  |
| PB3 Push Button | (blank) Illuminated<br>E Non-Illuminated | (blank) Momentary Switch<br>A Alternate Switch | (blank) Single Gang<br>2 Double Gang<br>N Narrow Stile<br>R Remote, Surface Mount |



## Securitron PB4L Push Buttons

| ITEM     | DESCRIPTION   | PRICE |
|----------|---|-------|
| PB4L-2   | 1/2" Round Button, Green Illuminated Halo, Momentary, DPDT, Single Gang, Green/Red LED  | \$144 |
| PB4LA-2  | 1/2" Round Button, Green Illuminated Halo, Alternate, DPDT, Single Gang, Green/Red LED  | \$144 |
| PB4LAN-2 | 1/2" Round Button, Green Illuminated Halo, Alternate, DPDT, Narrow Stile, Green/Red LED | \$144 |
| PB4LN-2  | 1/2" Round Button, Green Illuminated Halo, Momentary, DPDT, Narrow Stile, Green/Red LED | \$144 |



**How to Order** Specify quantity and the following information. Order related products separately.

| MODEL SERIES     | SWITCH TYPE                                    | MOUNTING METHOD                       | SWITCH PULL/THROW                  |
|------------------|--|---------------------------------------|------------------------------------|
| <b>PB4L</b>      | <b>A</b>                                       | <b>N</b>                              | <b>- 2</b>                         |
| PB4L Push Button | (blank) Momentary Switch<br>A Alternate Switch | (blank) Single Gang<br>N Narrow Stile | 2 Double Pole, Double Throw Switch |

## Securitron PB5 Push Buttons

| ITEM | DESCRIPTION  | PRICE |
|------|--|-------|
| PB5  | 2" Round Button, Illuminated, Momentary, SPDT, Single Gang, Green/Red/Handicap     | \$132 |
| PB5E | 2" Round Button, Non-Illuminated, Momentary, SPDT, Single Gang, Green/Red/Handicap | \$101 |



## Accessories

| ITEM   | DESCRIPTION  | PRICE |
|--------|--|-------|
| PB2-LK | 2" Button, Illumination Kit for PB2E, PB5E, EEB2, Series Push Button | \$31  |
| WBB    | Wall Mounted, Weatherized, Single Gang Box                           | \$40  |
| WCC    | Wall Mounted, Weather Cover, Single Gang Box                         | \$55  |

**How to Order** Specify quantity and the following information. Order related products separately.

| MODEL SERIES    | ILLUMINATION                             |
|-----------------|--|
| <b>PB5</b>      | <b>E</b>                                 |
| PB5 Push Button | (blank) Illuminated<br>E Non-Illuminated |

## Securitron MK Key Switches

| ITEM  | DESCRIPTION  | PRICE |
|-------|--|-------|
| MK    | Momentary, SPDT, Single Gang, Green/Red LED          | \$145 |
| MK2   | Momentary, DPDT, Single Gang, Green/Red LED          | \$170 |
| MKA   | Alternate, SPDT, Single Gang, Green/Red LED          | \$145 |
| MKA2  | Alternate, DPDT, Single Gang, Green/Red LED          | \$170 |
| MKAN  | Alternate, SPDT, Narrow, Green/Red LED               | \$145 |
| MKAN2 | Alternate, DPDT, Narrow, Green/Red LED               | \$170 |
| MKN   | Momentary, SPDT, Narrow, Green/Red LED               | \$145 |
| MKN2  | Momentary, DPDT, Narrow, Green/Red LED               | \$170 |
| MKPZ  | Momentary, SPDT, Double Gang, Green/Red LED, Audible | \$219 |
| MKAPZ | Alternate, SPDT, Double Gang, Green/Red LED, Audible | \$219 |



## Accessories

| ITEM   | DESCRIPTION  | PRICE |
|--------|--|-------|
| MKC-KD | Mortise Cylinder for MK Series – Keyed Differently | \$65  |
| MKC-KA | Mortise Cylinder for MK Series – Keyed Alike       | \$65  |
| MKS    | Momentary, Switch Only                             | \$37  |
| MKS2   | DPDT Momentary, Switch Only                        | \$62  |
| MKSA   | Alternate, Switch Only                             | \$37  |
| MKSA2  | DPDT Alternate, Switch Only                        | \$62  |

## How to Order

Specify quantity and the following information. Order related products separately.

| MODEL SERIES          | SWITCH TYPE                                    | MOUNTING METHOD                                       | SPECIAL FEATURE                               |
|-----------------------|--|---|---|
| <b>MK</b>             | <b>A</b>                                       | <b>N</b>  | <b>2</b>                                      |
| MK Mortise Key Switch | (blank) Momentary Switch<br>A Alternate Switch | (blank) Switch Gang<br>P Double Gang<br>N Narrow Gang | Z Audible<br>2 DPDT—Double Pole, Double Throw |

**Note:** Not every combination above is possible. Please contact the factory if you need a combination of features not listed on this page.

### Securitron KP-1 Tubular Key Switches

| ITEM | DESCRIPTION      | PRICE |
|------|------------------|-------|
| KP1  | Momentary Switch | \$183 |
| KP1A | Alternate Switch | \$183 |



**How to Order** *Specify quantity and the following information. Order related products separately.*

| MODEL SERIES           | SWITCH TYPE                                    |
|------------------------|--|
| KP1                    | A  |
| KP1 Tubular Key Switch | (blank) Momentary Switch<br>A Alternate Switch |

### Securitron WSS Wave Sense Switch

| ITEM   | DESCRIPTION                 | PRICE |
|--------|-----------------------------|-------|
| WSS-W1 | White Single Gang Faceplate | \$407 |
| WSS-W2 | White Double Gang Faceplate | \$407 |



### Accessories

| ITEM | DESCRIPTION                                  | PRICE |
|------|--|-------|
| WBB  | Wall Mounted, Weatherized, Single Gang Box   | \$40  |
| WCC  | Wall Mounted, Weather Cover, Single Gang Box | \$55  |

**How to Order** *Specify quantity and the following information. Order related products separately.*

| MODEL SERIES          | FINISH  | MOUNTING METHOD                |
|-----------------------|---------|--------------------------------|
| WSS                   | -W      | 1                              |
| WSS Wave Sense Switch | W White | 1 Single Gang<br>2 Double Gang |

### Securitron SP-1 Capacitive Button

| ITEM   | DESCRIPTION                               | PRICE |
|--------|---|-------|
| SP-1   | Touch Sense Plate                         | \$200 |
| SP-1L  | Label Touch Plate [SP-1]                  | \$8   |
| SP-1LH | Label Touch Plate [SP-1] — Handicap Decal | \$8   |



**How to Order** *Specify quantity and the following information. Order related products separately.*

| MODEL SERIES                           | LABEL                          |
|--|--------------------------------|
| SP-1                                   |                                |
| SP-1 Touch Sense Plate, Clear Anodized | L Touch To Exit<br>LH Handicap |

## Securitron DSB Dual Sense® Egress Bar

| MODEL          | DESCRIPTION                                  | BK    | CL    |
|----------------|--|-------|-------|
| <b>DSB</b>     | Non-Illuminated, 36" (Standard), 42", or 48" | \$535 | \$525 |
| <b>DSB-xxI</b> | Illuminated, 36" (Standard), 42", or 48"     | \$709 | \$699 |
| <b>EL-DSB</b>  | ElectroLynx, Illuminated, 36" Only           | \$570 | \$564 |



### Accessories

| ITEM           | DESCRIPTION                                       | PRICE |
|----------------|---|-------|
| <b>DSB-TDM</b> | Through Door Mounting Kit for DSB                 | \$16  |
| <b>TCP-CL</b>  | Touch Bar Cover Plates — Set of 2, Clear Anodized | \$95  |
| <b>TCP-BK</b>  | Touch Bar Cover Plates — Set of 2, Black Anodized | \$95  |

### How to Order *Specify quantity and the following information. Order related products separately.*

| CONNECTOR STYLE           | MODEL SERIES              | FINISH                   | ILLUMINATION            | BAR LENGTH                |
|---------------------------|---------------------------|--------------------------|-------------------------|---------------------------|
| <b>EL</b>                 | <b>– DSB</b>              | <b>– CL</b>              | <b>I</b>                | <b>42</b>                 |
| (blank) No Connectors     | <b>DSB</b> Dual Sense Bar | <b>BK</b> Black Anodized | (blank) Non Illuminated | (blank) 36" Standard Unit |
| EL ElectroLynx Connectors |                           | <b>CL</b> Clear Anodized | <b>I</b> Illuminated    | <b>42</b> 42" Length      |
|                           |                           |                          |                         | <b>48</b> 48" Length      |

**Note:** Not every combination above is possible. Please contact the factory if you need a combination of features not listed on this page.

## Securitron TSB Touch Sense® Egress Bar

| MODEL          | DESCRIPTION   | BK    | CL    |
|----------------|---|-------|-------|
| <b>DTSB</b>    | Dummy with End Caps & Fasteners — 36" (Standard), 42", or 48" | \$262 | \$238 |
| <b>EL-TSB</b>  | ElectroLynx — 36" (Standard), 42", or 48"                     | \$506 | \$484 |
| <b>TSB</b>     | 36" (Standard), 42", or 48"                                   | \$487 | \$464 |
| <b>TSB-xxT</b> | Trailing Edge Timer [3 Sec.] — BK 36" only, CL 36" or 42"     | \$487 | \$464 |



### Accessories

| ITEM           | DESCRIPTION                                       | PRICE |
|----------------|---|-------|
| <b>TSB-TDM</b> | Through Door Mounting Kit for TSB                 | \$16  |
| <b>TCP-BK</b>  | Touch Bar Cover Plates — Set of 2, Black Anodized | \$95  |
| <b>TCP-CL</b>  | Touch Bar Cover Plates — Set of 2, Clear Anodized | \$95  |

### How to Order *Specify quantity and the following information. Order related products separately.*

| CONNECTOR STYLE           | MODEL SERIES               | FINISH                   | ILLUMINATION                 | BAR LENGTH                |
|---------------------------|----------------------------|--------------------------|------------------------------|---------------------------|
| <b>EL</b>                 | <b>– TSB</b>               | <b>– CL</b>              | <b>T</b>                     | <b>– 42</b>               |
| (blank) No Connectors     | <b>TSB</b> Touch Sense Bar | <b>BK</b> Black Anodized | <b>T</b> Trailing Edge Timer | (blank) 36" Standard Unit |
| EL ElectroLynx Connectors |                            | <b>CL</b> Clear Anodized |                              | <b>42"</b>                |
|                           |                            |                          |                              | <b>48"</b>                |

**Note:** Not every combination above is possible. Please contact the factory if you need a combination of features not listed on this page.



## Securitron EMB Electromechanical Egress Bar

| MODEL       | DESCRIPTION                                    | BK    | CL    |
|-------------|--|-------|-------|
| <b>EMB</b>  | 36" (Standard), 42", or 48"                    | \$295 | \$282 |
| <b>WEMB</b> | Weather Resistant, 36" (Standard), 42", or 48" | \$324 | \$312 |



### Accessories

| MODEL      | DESCRIPTION                       | BK   | CL   |
|------------|-----------------------------------|------|------|
| <b>TCP</b> | Touch Bar Cover Plates — Set of 2 | \$95 | \$95 |

### How to Order *Specify quantity and the following information. Order related products separately.*

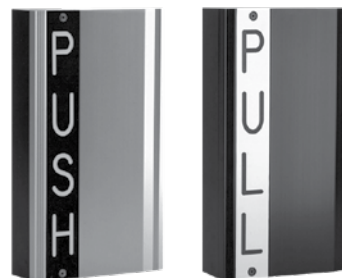
| MODEL SERIES  | FINISH                   | BAR LENGTH                       |
|---|--------------------------|----------------------------------|
| <b>EMB</b>  | <b>- CL</b>              | <b>- 48</b>                      |
| <b>EMB</b> Electromechanical Bar                    | <b>BK</b> Black Anodized | <b>(blank)</b> 36" Standard Unit |
| <b>WEMB</b> Weather Resistant Electromechanical Bar | <b>CL</b> Clear Anodized | <b>42"</b>                       |
|   |                          | <b>48"</b>                       |

## Securitron TSH Touch Sense® Handle

| MODEL         | DESCRIPTION             | BK    | CL    |
|---------------|-------------------------|-------|-------|
| <b>EL-TSH</b> | ElectroLynx — Push/Pull | \$506 | \$506 |
| <b>TSH</b>    | Push/Pull               | \$477 | \$477 |

### How to Order *Specify quantity and the following information. Order related products separately.*

| CONNECTOR STYLE                  | MODEL SERIES                  | FINISH                   |
|----------------------------------|-------------------------------|--------------------------|
| <b>EL</b>                        | <b>- TSH</b>                  | <b>- CL</b>              |
| <b>(blank)</b> No Connectors     | <b>TSH</b> Touch Sense Handle | <b>BK</b> Black Anodized |
| <b>EL</b> ElectroLynx Connectors |                               | <b>CL</b> Clear Anodized |



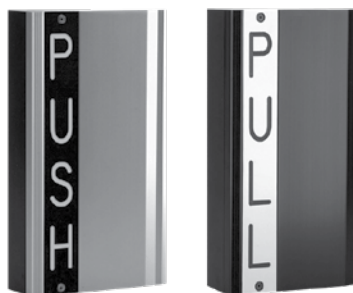
## Securitron EMH Electromechanical Handle

| MODEL         | DESCRIPTION             | BK    | CL    |
|---------------|-------------------------|-------|-------|
| <b>EL-EMH</b> | ElectroLynx — Push/Pull |       | \$494 |
| <b>EMH</b>    | Push/Pull               | \$471 | \$471 |

### How to Order

*Specify quantity and the following information. Order related products separately.*

| CONNECTOR STYLE                  | MODEL SERIES                        | FINISH                   |
|----------------------------------|-------------------------------------|--------------------------|
| <b>EL</b>                        | <b>- EMH</b>                        | <b>- CL</b>              |
| <b>(blank)</b> No Connectors     | <b>EMH</b> Electromechanical Handle | <b>BK</b> Black Anodized |
| <b>EL</b> ElectroLynx Connectors |                                     | <b>CL</b> Clear Anodized |



# Power

## Securitron BPS Linear Power Supplies

| ITEM        | DESCRIPTION                    | PRICE  |
|-------------|--------------------------------|--------|
| BPS-12/24-1 | Dual Voltage 12/24 VDC, 1 Amp  | \$312  |
| BPS-12-1    | 12 VDC, 1 Amp                  | \$252  |
| BPS-12-3    | 12 VDC, 3 Amp                  | \$490  |
| BPS-12-45   | 12 VDC, 4.5 Amp                | \$791  |
| BPS-12-6    | 12 VDC, 6 Amp                  | \$877  |
| BPS-12-9    | 12 VDC, 9 Amp                  | \$1060 |
| BPS-12-15   | 12 VDC, 15 Amp                 | \$1305 |
| BPS-24-1    | 24 VDC, 1 Amp                  | \$252  |
| BPS-24-2    | 24 VDC, 2 Amp                  | \$490  |
| BPS-24-3    | 24 VDC, 3 Amp                  | \$740  |
| BPS-24-4    | 24 VDC, 4 Amp                  | \$877  |
| BPS-24-6    | 24 VDC, 6 Amp                  | \$1060 |
| BPS-24-10   | 24 VDC, 10 Amp                 | \$1305 |
| BPSM-12-6   | 12 VDC, Status Monitor, 6 Amp  | \$928  |
| BPSM-12-9   | 12 VDC, Status Monitor, 9 Amp  | \$1111 |
| BPSM-12-15  | 12 VDC, Status Monitor, 15 Amp | \$1354 |
| BPSM-24-4   | 24 VDC, Status Monitor, 4 Amp  | \$928  |
| BPSM-24-6   | 24 VDC, Status Monitor, 6 Amp  | \$1111 |
| BPSM-24-10  | 24 VDC, Status Monitor, 10 Amp | \$1354 |

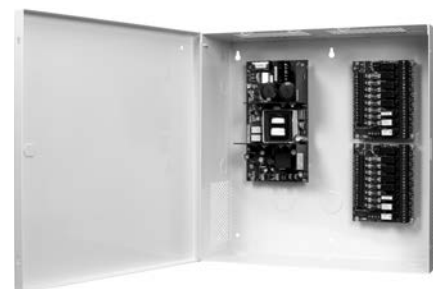


### How to Order *Specify quantity and the following information. Order related products separately.*

| MODEL SERIES | SWITCH TYPE                               | VOLTAGE                | OUTPUT POWER     |
|--------------|---|------------------------|------------------|
| <b>BPS</b>   | <b>M</b>                                  | <b>- 24</b>            | <b>-X</b>        |
| BPS          | (blank) No Monitoring<br>M PSM Monitoring | 12 12 VDC<br>24 24 VDC | X Output in Amps |

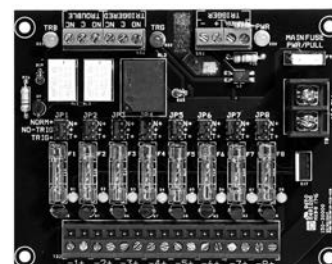
## Securitron AQ Series Power Supplies with Enclosures

| ITEM    | DESCRIPTION                                     | PRICE |
|---------|---|-------|
| AQD1    | 1 Amp, Dual Voltage Power Supply with enclosure | \$210 |
| AQD2    | 2 Amp, Dual Voltage Power Supply with enclosure | \$240 |
| AQD4    | 4 Amp, Dual Voltage Power Supply with enclosure | \$285 |
| AQD6    | 6 Amp, Dual Voltage Power Supply with enclosure | \$340 |
| AQS1210 | 10 Amp, 12 VDC Power Supply with enclosure      | \$415 |
| AQS1216 | 16 Amp, 12 VDC Power Supply with enclosure      | \$440 |
| AQS2410 | 10 Amp, 24 VDC Power Supply with enclosure      | \$440 |



## Securitron AQ Series Distribution Boards

| ITEM      | DESCRIPTION   | PRICE |
|-----------|---|-------|
| PDB-1R    | Fire Trigger / Relay Interface Board                        | \$40  |
| PDB-4F1   | 4 Glass Fused Outputs, 1 Amp each                           | \$40  |
| PDB-4F2   | 4 Glass Fused Outputs, 2 Amp each                           | \$40  |
| PDB-4C1   | 4 PTC Outputs, 1 Amp each                                   | \$40  |
| PDB-4C2   | 4 PTC Outputs, 1 Amp each                                   | \$40  |
| PDB-8F1   | 8 Glass Fused Outputs, 1 Amp each                           | \$46  |
| PDB-8F2   | 8 Glass Fused Outputs, 2 Amp each                           | \$46  |
| PDB-8C1   | 8 PTC Outputs, 1 Amp each                                   | \$46  |
| PDB-8C2   | 8 PTC Outputs, 1 Amp each                                   | \$46  |
| PDB-8F8R1 | 8 Glass Fused Output with Relays, Fire Trigger, 1 Amp each  | \$120 |
| PDB-8F8R2 | 8 Glass Fused Outputs with Relays, Fire Trigger, 2 Amp each | \$120 |
| PDB-8C8R1 | 8 PTC Outputs with Relays, Fire Trigger, 1 Amp each         | \$120 |
| PDB-8C8R2 | 8 PTC Outputs with Relays, Fire Trigger, 2 Amp each         | \$120 |
| PDB-8C1R1 | 8 PTC Outputs, Fire Trigger/Relay, 1 Amp each               | \$94  |
| PDB-8C1R2 | 8 PTC Outputs, Fire Trigger/Relay, 2 Amp each               | \$94  |
| PDB-8F1R1 | 8 Glass Fuse Outputs, Fire Trigger/Relay, 1 Amp each        | \$94  |
| PDB-8F1R2 | 8 Glass Fuse Outputs, Fire Trigger/Relay, 2 Amp each        | \$94  |



## Securitron AQ Series Power Supply Boards Only

| ITEM     | DESCRIPTION                                 | PRICE |
|----------|---|-------|
| AQD1B    | 1 Amp, Dual Voltage Power Supply Board Only | \$135 |
| AQD2B    | 2 Amp, Dual Voltage Power Supply Board Only | \$156 |
| AQD4B    | 4 Amp, Dual Voltage Power Supply Board Only | \$235 |
| AQD6B    | 6 Amp, Dual Voltage Power Supply Board Only | \$272 |
| AQS1210B | 10 Amp, 12 VDC Power Supply Board Only      | \$367 |
| AQS2410B | 10 Amp, 24 VDC Power Supply Board Only      | \$393 |
| AQS1216B | 16 Amp, 12 VDC Power Supply Board Only      | \$393 |



## How to Order Specify quantity and the following information. Order related products separately.

| MODEL SERIES | OUTPUT TYPE         | VOLTAGE                | OUTPUT POWER | ENCLOSURE STYLE      | NUMBER OF OUTPUTS                         | FUSE TYPE          | NUMBER OF RELAYS | RELAYS   | FUSE SIZE |
|--------------|---------------------|------------------------|--------------|----------------------|---|--------------------|------------------|----------|-----------|
| <b>AQ</b>    | <b>D</b>            | <b>(blank)</b>         | <b>6</b>     | <b>-</b>             | <b>8</b>                                  | <b>F</b>           | <b>8</b>         | <b>R</b> | <b>2</b>  |
| AQ           | D Dual Voltage *    | (blank) Dual Voltage * | 1 *          | - In Enclosure       | (blank) One Output, No Distribution Board |                    |                  |          |           |
|              | S Single Voltage ** | 12 12 VDC **           | 2 *          | B Circuit Board Only | 4   | F Glass + Fuses    | 1                | R Relays | 1 1 Amp   |
|              |                     |                        | 4 *          |                      | 8   | C PTC + Polyswitch | 2                |          | 2 2 Amp   |
|              |                     |                        | 6 *          |                      | 12  |                    | 8                |          |           |
|              |                     |                        | 10 **        |                      | 16  |                    | 9                |          |           |
|              |                     |                        | 16 **        |                      |   |                    | 16               |          |           |

\*Dual Voltage Option Only.

\*\*Single Voltage Option Only.

† Fuse type and size must be the same for both distribution boards for standard ordering.

For custom configurations, please contact the factory at 800.626.7590.

## Securiton EcoPower® Sustainable Power Supply

| ITEM    | DESCRIPTION                            | PRICE |
|---------|--|-------|
| EPS-05  | 0.5 Amp, 2 Outputs for Low Power Locks | \$303 |
| EPS-05B | Power Supply Board Only                | \$147 |

### Accessories

| ITEM    | DESCRIPTION               | PRICE |
|---------|---------------------------|-------|
| B-12-08 | Battery — 12 VDC, 0.8 Amp | \$67  |

### How to Order *Specify quantity and the following information. Order related products separately.*

| MODEL SERIES | OUTPUT POWER | OPTION(S)  |
|--------------|--------------|--|
| EPS          | – 05         | B  |
| EPS          | 05 0.5 Amps  | (blank) PS, enclosure, battery<br>B Circuit Board Only |

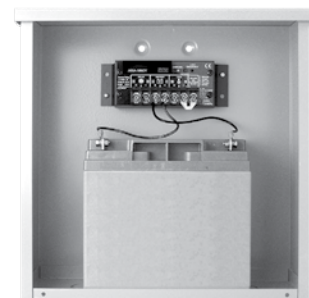


## Securiton BPSS Solar Power Supplies

| ITEM    | DESCRIPTION                                    | PRICE |
|---------|--|-------|
| BPSS-10 | 12 VDC with 10 W Solar Panel and 9 Ah Battery  | \$836 |
| BPSS-20 | 12 VDC with 20 W Solar Panel and 18 Ah Battery | \$947 |

### BPSS Accessories

| ITEM    | DESCRIPTION                                   | PRICE |
|---------|---|-------|
| PMK-3   | Mounting Kit 3 in Pole for CCM Nema Enclosure | \$124 |
| SPK     | Solar Panel Kit — 20 W                        | \$806 |
| SWK     | High Wind Kit for 20 W Solar Panel            | \$158 |
| B-12-9  | Battery — 12 VDC, 9 Ah                        | \$159 |
| B-12-18 | Battery — 12 VDC, 18 Ah                       | \$206 |



### How to Order *Specify quantity and the following information. Order related products separately.*

| MODEL SERIES            | SOLAR POWER OUTPUT |
|-------------------------|--------------------|
| BPSS Solar Power Supply | – 10               |
|                         | 10 10 Watts        |
|                         | 20 20 Watts        |

## Securiton AQE Single Port Injector Single-Port PoE

| ITEM   | DESCRIPTION                             | PRICE |
|--------|---|-------|
| AQE15  | MidSpan Injector, 1.4 Amp, Dual Voltage | \$110 |
| AQE30  | MidSpan Injector, 2.6 Amp, Dual Voltage | \$170 |
| AQE30E | MidSpan Extractor, 0.6 Amp              | \$170 |

### How to Order *Specify quantity and the following information. Order related products separately.*

| MODEL SERIES | POWER | FUNCTION             | MOUNTING STYLE          |
|--------------|-------|----------------------|-------------------------|
| AQE PoE      | 15    | (blank) PoE Injector | (blank) Single Port     |
|              | 30    | E PoE Extractor      | R Rack Mount Multi-Port |

Items can only be ordered as listed above.



## Securitron AQE Multi-Port Rack Mount PoE

| ITEM    | DESCRIPTION                        | PRICE  |
|---------|------------------------------------|--------|
| AQE250R | 256 W, 16 Port Rack Mount Injector | \$2280 |
| AQE500R | 540 W, 16 Port Rack Mount Injector | \$2715 |

### How to Order Specify quantity and the following information. Order related products separately.

| MODEL SERIES | POWER      | FUNCTION             | MOUNTING STYLE          |
|--------------|------------|----------------------|-------------------------|
| <b>AQE</b>   | <b>500</b> |                      | <b>R</b>                |
| AQE PoE      | 250        | (blank) PoE Injector | (blank) Single Port     |
|              | 500        | E PoE Extractor      | R Rack Mount Multi-Port |

*Items can only be ordered as listed above.*



## Securitron PSP Plug-In Power Supplies

| ITEM       | DESCRIPTION     | PRICE |
|------------|-----------------|-------|
| PSP-12     | 12 VDC, 700 mA  | \$50  |
| PSP-24     | 24 VDC, 350 mA  | \$50  |
| PSP-12-3   | 12 VDC, 3 Amp   | \$99  |
| PSP-24-1.5 | 24 VDC, 1.5 Amp | \$99  |



## Additional Power Products

| ITEM     | DESCRIPTION  | PRICE |
|----------|--|-------|
| BR-4     | Bridge Rectifier — 4 Amp                               | \$35  |
| B-12-08  | Battery — 12 VDC, 0.8 Amp                              | \$67  |
| B-12-5   | Battery — 12 VDC, 5 Amp                                | \$56  |
| B-24-5   | Battery — 24 VDC, 5 Amp                                | \$115 |
| CKL      | Cabinet Key Lock                                       | \$27  |
| CCB-8-12 | Central Control Board — 12 VDC, 8 Fused Outputs        | \$119 |
| CCB-8-24 | Central Control Board — 24 VDC, 8 Fused Outputs        | \$119 |
| CFAR-12  | Fire Alert Reset Control — Canada — 12 VDC, Board Only | \$86  |
| CFAR-24  | Fire Alert Reset Control — Canada — 24 VDC, Board Only | \$87  |
| FAR-12   | Fire Alert Reset Control — 12 VDC                      | \$312 |
| FAR-24   | Fire Alert Reset Control — 24 VDC                      | \$312 |
| PSM-12   | Power Supply Monitor — 12 VDC                          | \$729 |
| PSM-24   | Power Supply Monitor — 24 VDC                          | \$729 |

# Power Transfers

## Securitron ICPT Inductive Coupling Power Transfer

| ITEM | DESCRIPTION | PRICE |
|------|-------------|-------|
| ICPT | Power Jump  | \$302 |



## Securitron CEPT Concealed Electrical Power Transfers

| MODEL    | DESCRIPTION             | 04    | 10    | 10B   | 630   |
|----------|-------------------------|-------|-------|-------|-------|
| CEPT-10  | 10 Wire                 | \$502 | \$502 | \$502 | \$411 |
| CEPT-C5E | ElectroLynx® Connectors | \$552 | \$552 | \$552 | \$459 |
| CEPT-NW  | No Wires                |       |       |       | \$411 |
| EL-CEPT  | CAT-5E                  | \$521 | \$521 | \$557 | \$492 |



### How to Order *Specify quantity and the following information. Order related products separately.*

| WIRE CONNECTORS            | MODEL          | NUMBER OF WIRES                        | FINISH                            |
|----------------------------|----------------|--|-----------------------------------|
| <b>EL</b>                  | <b>– CEPT</b>  | <b>– C5E</b>                           | <b>– 10B</b>                      |
| (blank) No Connectors      | CEPT Concealed | (blank) 12 Wires<br>(for EL CEPT only) | (blank) 630 Satin Stainless Steel |
| EL ElectroLynx® Connectors |                | <b>10</b> 10 Wires                     | <b>04</b> 606 Satin Brass         |
|                            |                | <b>C5E</b> 9 Wires                     | <b>10</b> 612 Satin Bronze        |
|                            |                | <b>NW</b>                              | <b>10B</b> 613 Bronze Toned       |

## Securitron SEPT Square-Cut Electrical Power Transfers

| ITEM     | DESCRIPTION             | PRICE |
|----------|-------------------------|-------|
| SEPT     | Cut Standard Version    | \$81  |
| SEPT-10  | 10 Wire                 | \$115 |
| SEPT-C5E | CAT-5E Compatible       | \$110 |
| EL-SEPT  | ElectroLynx® Connectors | \$106 |



### How to Order *Specify quantity and the following information. Order related products separately.*

| WIRE CONNECTORS            | MODEL           | NUMBER OF WIRES    |
|----------------------------|-----------------|--------------------|
| <b>EL</b>                  | <b>– SEPT</b>   | <b>– C5E</b>       |
| (blank) No Connectors      | SEPT Square-Cut | (blank) 12 Wires   |
| EL ElectroLynx® Connectors |                 | <b>10</b> 10 Wires |
|                            |                 | <b>C5E</b> 9 Wires |

## Securitron EPT Electrical Power Transfers

| ITEM      | DESCRIPTION                           | PRICE |
|-----------|---------------------------------------|-------|
| EPT       | 10" Cord, Standard Swing              | \$72  |
| EPTL      | 18" Cord, Standard Swing              | \$96  |
| EPT-SC    | 10" Cord, Swing Clear                 | \$108 |
| EL-EPT    | ElectroLynx® 10" Cord, Standard Swing | \$111 |
| EL-EPTL   | ElectroLynx® 18" Cord, Standard Swing | \$134 |
| EL-EPT-SC | ElectroLynx® 10" Cord, Swing Clear    | \$146 |

### How to Order *Specify quantity and the following information. Order related products separately.*

| WIRE CONNECTIONS           | SHAPE         | DOOR SWING              |
|----------------------------|---------------|-------------------------|
| <b>EL</b>                  | <b>- EPT</b>  | <b>- SC</b>             |
| (blank) No Connectors      | EPT 10" Cord  | (blank) Standard Swing  |
| EL ElectroLynx® Connectors | EPTL 18" Cord | SC Swing Clear / Pivots |
|                            |               | CSE 9 Wires             |

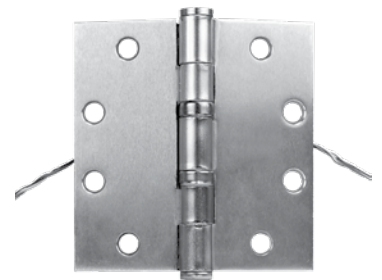


## Securitron EH Electric Hinges

| ITEM  | DESCRIPTION          | PRICE |
|-------|----------------------|-------|
| EH-40 | 6 Wire [4.5" x 4.0"] | \$295 |
| EH-45 | 6 Wire [4.5" x 4.5"] | \$295 |

### How to Order *Specify quantity and the following information. Order related products separately.*

| MODEL SERIES      | LENGTH         |
|-------------------|----------------|
| <b>EH</b>         | <b>- 45</b>    |
| EH Electric Hinge | 40 4" Length   |
|                   | 45 4.5" Length |



## Securitron TSB-C Door Cords

| ITEM    | DESCRIPTION                | PRICE |
|---------|----------------------------|-------|
| TSB-C   | With Caps, Gray/Black, 18" | \$37  |
| TSB-CXL | With Caps, Gray/Black, 36" | \$46  |

### How to Order *Specify quantity and the following information. Order related products separately.*

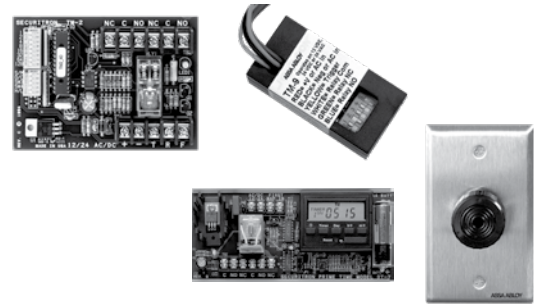
| MODEL SERIES    | SIZE        |
|-----------------|-------------|
| <b>TSB-C</b>    | <b>XL</b>   |
| TSB-C Door Cord | (blank) 18" |
|                 | XL 36"      |



# Accessories

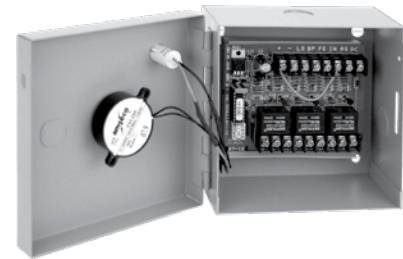
## Securitron TM-2, TM-9, DT-7 and PZ1 Timers & Alarms

| ITEM | DESCRIPTION                         | PRICE |
|------|-------------------------------------|-------|
| TM-2 | Multi-Function Timer, 1-255 seconds | \$155 |
| TM-9 | Time Mate Timer, 2-36 Seconds       | \$79  |
| DT-7 | Digital Timer, 7 day                | \$250 |
| PZ1  | Piezo on Keyplate — Single Gang     | \$75  |



## Securitron BA-DPA Drop Prop Alarm Monitoring

| ITEM      | DESCRIPTION             | PRICE |
|-----------|-------------------------|-------|
| BA-DPA-24 | 24 VDC With Boxed Alarm | \$273 |
| BA-DPA-12 | 12 VDC with Boxed Alarm | \$273 |



**How to Order** *Specify quantity and the following information. Order related products separately.*

| MODEL SERIES                 | VOLTAGE     |
|------------------------------|-------------|
| <b>BA-DPA</b>                | <b>- 24</b> |
| BA-DPA Door Prop Alarm Timer | 12 12 VDC   |
|                              | 24 24 VDC   |

## Securitron DPS Door Position Switches

| MODEL | DESCRIPTION     | BK   | GY   | W    |
|-------|-----------------|------|------|------|
| DPS-M | For Metal Doors | \$32 | \$32 | \$32 |
| DPS-W | For Wood Doors  | \$24 | \$24 | \$24 |





## Securitron MSS Magnetic Switch/High Security

| ITEM      | DESCRIPTION                   | PRICE |
|-----------|-------------------------------|-------|
| MSS-1     | Magnetic High Security Switch | \$236 |
| MSS-1-RT  | Remote Test                   | \$277 |
| MSS-1C    | Concealed                     | \$236 |
| MSS-1C-RT | Concealed, Remote Test        | \$277 |
| MSS-1G    | Surface Mount                 | \$236 |
| MSS-1G-RT | Surface Mount, Remote Test    | \$277 |



**How to Order** *Specify quantity and the following information. Order related products separately.*

| MODEL SERIES                 | MOUNTING METHOD                | SPECIAL FEATURE |
|------------------------------|--------------------------------|-----------------|
| MSS-1                        | C                              | - RT            |
| MSS Magnetic Security Switch | C Concealed<br>G Surface Mount | RT Remote Test  |

**NOTE:** No other combinations of model numbers can be ordered other than what is listed.

## Securitron LM Latch Monitors

| ITEM  | DESCRIPTION                                     | PRICE |
|-------|---|-------|
| LML-1 | ANSI, 4-7/8, Strike, SPDT, 3 Amp                | \$126 |
| LML-2 | ANSI, 4-7/8, Strike, SPDT, 3 Amp, Dual Switches | \$173 |
| LMS-1 | ANSI, 2-3/4", Strike, SPDT, 3 Amp               | \$126 |

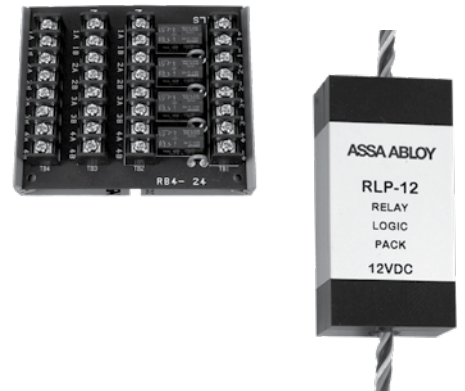


**How to Order** *Specify quantity and the following information. Order related products separately.*

| MODEL SERIES     | STRIKE SIZE                                  | NUMBER OF SWITCHES                 |
|------------------|--|------------------------------------|
| LM               | S  | -2                                 |
| LM Latch Monitor | L ANSI 4-7/8" Strike<br>S ANSI 2-3/4" Strike | 1 Single Switch<br>2 Dual Switches |

## Securitron RLP, RB-4 Relay Logic Packs & Boards

| ITEM    | DESCRIPTION               | PRICE |
|---------|---------------------------|-------|
| RLP-12  | Relay Logic Pack — 12 VDC | \$63  |
| RLP-24  | Relay Logic Pack — 24 VDC | \$63  |
| RB-4-12 | Relay Board — 12 VDC      | \$124 |
| RB-4-24 | Relay Board — 24 VDC      | \$124 |



**How to Order** *Specify quantity and the following information. Order related products separately.*

| MODEL SERIES         | VOLTAGE   |
|----------------------|-----------|
| RLP                  | - 12      |
| RLP Relay Logic Pack | 12 12 VDC |
| RB-4 Relay Board     | 24 24 VDC |

## ASSA ABLOY

### Electronic Security Hardware Warranties

In 1999 Securitron introduced the first no-fault, no questions asked warranty to the industry, MagnaCare®. We believe that the best products in the industry should be supported by our commitment to deliver the highest quality products and services. ASSA ABLOY Electronic Security Hardware proudly extends the most comprehensive no-fault, no questions asked warranty coverage to all of our products and solutions. This is our expectation and commitment to you — our valued customer.



MagnaCare  
Warranty

#### MagnaCare Warranty

**Duration:** Lifetime

**Condition:** Any reason, including, but not limited to, installation error, vandalism or force majeure.

**Replacement:** Replacement product or equivalent shipped at ASSA ABLOY Electronic Security Hardware expense via next day air freight in most cases.

**Products Covered:**

- Electromagnetic and Specialty Locks
- Power Supplies (excluding BPSS) and Power Transfers
- Push Buttons, Keypads, Keyswitches and Egress Devices



SecuriCare  
Warranty

#### SecuriCare 10-year Warranty

**Duration:** Ten years from date of shipment

**Condition:** Any reason including, but not limited to, installation error, vandalism or force majeure

**Replacement:** Replacement product or equivalent shipped at ASSA ABLOY Electronic Security Hardware expense via next day air freight in most cases.

**Products Covered:**

- HES 1500, 1600 Electric Strikes
- When installed with a HES Smart PAC III, the following electric strikes are upgraded to the 10-year warranty:
  - » HES 1006, 4500, 5000, 5200, 7500, 8000, 8300, 8500, 9400, 9500, 9600, 9700, 9800, HES Folger Adam 310, 712, 732, 742 Electric Strikes
  - » Integrated Wiegand Electric Strikes



SecuriCare  
Warranty

#### SecuriCare 5-year Warranty

**Duration:** Five years from date of shipment

**Condition:** Any reason including, but not limited to, installation error, vandalism or force majeure.

**Replacement:** Replacement product or equivalent shipped at ASSA ABLOY Electronic Security Hardware's expense via next day air freight in most cases.

**Products Covered:**

- HES 1006, 4500, 5000, 5200, 7500, 8000, 8300, 8500, 9400, 9500, 9600, 9700, 9800, HES Folger Adam 310, 712, 732, 742 Electric Strikes
- Integrated Wiegand Electric Strikes
- Securitron MUNL, UNL Electric Strikes



SecuriCare  
Warranty

#### SecuriCare 3-year Warranty

**Duration:** Three years from date of shipment

**Condition:** Any reason, including but not limited to, installation error, vandalism or force majeure

**Replacement:** Replacement product or equivalent shipped at ASSA ABLOY Electronic Security Hardware's expense via next day air freight in most cases.

**Products Covered:**

- Aperio® Wireless Products K100, KS100, R100
- HES 610, 660, K20, KP20 Cabinet Locks
- Integrated Wiegand Cabinet Locks HES K200, KS200
- BPSS Solar Power Supplies
- Accessories

ASSA ABLOY Electronic Security Hardware Warranties apply to products shipped on or before January 1, 2018. Check your individual product to determine warranty coverage. Batteries and consumables are not covered by ASSA ABLOY Electronic Security Hardware Warranty programs. Replacement products, at ASSA ABLOY Electronic Security Hardware's sole option, may be the identical item or a unit which serves as a functional replacement. If the customer has an account with ASSA ABLOY Electronic Security Hardware or a valid credit card, the customer may order an advance replacement product, whereby ASSA ABLOY Electronic Security Hardware will charge the customer's account for the price of the product plus next day air freight, and will credit back to the customer the full amount of the charge, including outbound freight, upon ASSA ABLOY Electronic Security Hardware's receipt of the original product from the customer. ASSA ABLOY Electronic Security Hardware's sole and exclusive liability, and customer's sole remedy, is limited to the replacement of the ASSA ABLOY Electronic Security Hardware product when delivered to ASSA ABLOY Electronic Security Hardware's facility (freight and insurance charges prepaid by customer).

## ASSA ABLOY

### Electronic Security Hardware Terms & Conditions

**PRICES:** All prices are subject to change without notice. Prices listed on [assaabloyesh.com](http://assaabloyesh.com) will serve as the most current list price. All shipments will be made at prices in effect at the time of shipment. The customer shall be responsible for payment of all applicable sales and/or use taxes and freight costs.

**MINIMUM ORDER:** Minimum product charge per invoice is \$150.00 USD.

**PAYMENT TERMS:** Net thirty (30) days from date of invoice. Interest at the rate of up to 1-1/2% per month may be charged on all past due accounts. An order received on an account which has not been paid within 45 days of the date of invoice may not be processed until the account is current. Custom orders may require a deposit.

**DELIVERY TERMS:** All prices are Ex-works factory. Purchaser assumes the risk of loss or damage to the goods while in transit from the point of shipment. ASSA ABLOY Electronic Security Hardware reserves the right to make delivery in installments. Installments shall be separately invoiced and paid for when due. Delay in delivery of an installment shall not relieve the purchaser of its obligation to accept remaining deliveries.

**SHORTAGE:** Any claim for shortages must be made to ASSA ABLOY Electronic Security Hardware in writing within one (1) week of receipt of merchandise.

**WARRANTY RETURNS:** A Customer Care Form (CCF) for defective product must be obtained from ASSA ABLOY Electronic Security Hardware before any merchandise can be returned. CCF's are valid for sixty (60) days from date of issuance. Goods returned under the terms of MagnaCare® and SecuriCare Warranties may require a copy of the original invoice.

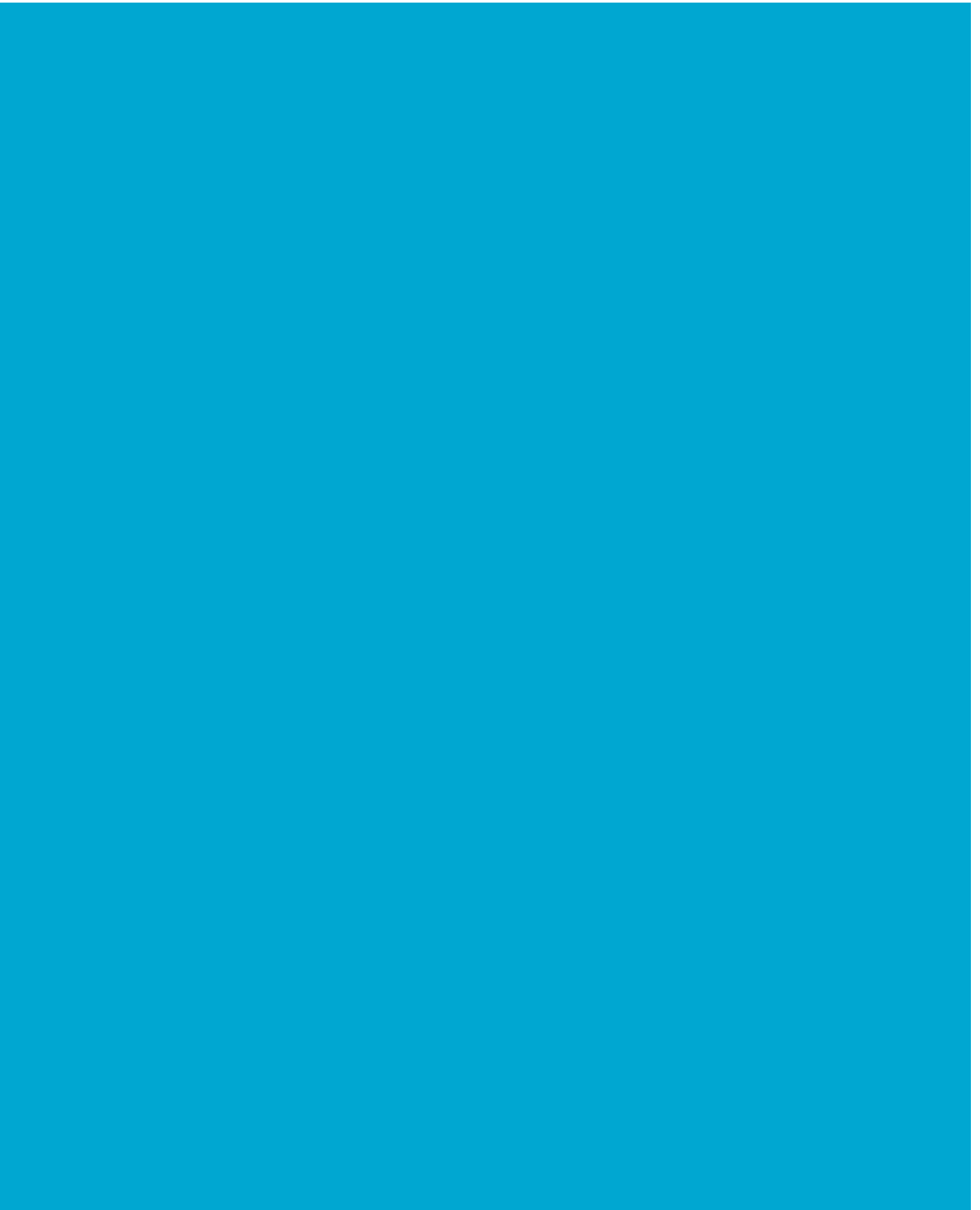
**RETURNS:** A Customer Care Form (CCF) must be obtained from ASSA ABLOY Electronic Security Hardware before any merchandise can be returned. CCF's are valid for sixty (60) days from date of issuance. Items that are not factory sealed, or that are returned later than ninety (90) days from the date of receipt are subject to a restocking charge plus an additional charge for any damage.

**CANCELLATIONS:** Any order may be subject to a 5% cancellation charge for catalog items. Cancellation of non-catalog or custom items will be subject to a 20% cancellation charge plus all costs (both direct and indirect) incurred by manufacturing at the point of cancellation that are properly allocated to the cancelled item(s).

**LIMITATION OF LIABILITY:** Neither party will be liable to the other for any delay or failure in performance arising directly out of war, sabotage, insurrection, riot, and any other act of civil disobedience, act of public enemy, fire, explosion, flood, storm, or other act of God or nature, or similar cause beyond its reasonable control, including shortage or unavailability of labor or materials. If, notwithstanding the foregoing limitations, ASSA ABLOY Electronic Security Hardware has any liability to the purchaser, the purchaser agrees that the total liability to the purchaser for all losses, damages, and causes of action, whether in contract, equity, tort (including without limitation, negligence and gross negligence), or otherwise, will not exceed the amount the purchaser paid to ASSA ABLOY Electronic Security Hardware for the products (including, without limitation, incidental or consequential damages, damages for lost profits or business interruption, and punitive damages).

**NO THIRD PARTY LIABILITY:** If the purchaser uses the ASSA ABLOY Electronic Security Hardware Products on behalf of others or provides to others any products referenced herein, the ASSA ABLOY Electronic Security Hardware Parties shall have no liability to such persons whatsoever, and the purchaser agree to defend and indemnify the ASSA ABLOY Electronic Security Hardware Parties from any and all claims and demands asserted against them, and from any legal fees, costs and other expenses that the ASSA ABLOY Electronic Security Hardware Parties incur therewith.

Customers purchasing from Door Security Solutions Canada can find Canadian terms and conditions at [www.assaabloy.ca/terms](http://www.assaabloy.ca/terms)



The ASSA ABLOY Group is the global leader in access solutions. Every day, we help billions of people experience a more open world.

ASSA ABLOY Opening Solutions leads the development within door openings and products for access solutions in homes, businesses and institutions. Our offering includes doors, frames, door and window hardware, locks, perimeter fencing, access control and service.

**ASSA ABLOY**  
Opening Solutions

## ELECTRONIC SECURITY HARDWARE

HES | Securitron

### USA

800 626 7590 | f. 866 582 4641 | [assaabloyesh.com](http://assaabloyesh.com)  
[customerservice.esh@assaabloy.com](mailto:customerservice.esh@assaabloy.com)  
[techsupport.esh@assaabloy.com](mailto:techsupport.esh@assaabloy.com)  
[orders.esh@assaabloy.com](mailto:orders.esh@assaabloy.com)

### CANADA

800 461 3007 | f. 800 461 8989 | [assaabloydss.ca](http://assaabloydss.ca)  
[sales.dss.ca@assaabloy.com](mailto:sales.dss.ca@assaabloy.com)  
[orders.dss.ca@assaabloy.com](mailto:orders.dss.ca@assaabloy.com)

Patent pending and/or patent [www.assaabloydss.com/patents](http://www.assaabloydss.com/patents)

Copyright © 2019, Hanchett Entry Systems, Inc., an ASSA ABLOY Group company. All rights reserved. Reproduction in whole or in part without the express written permission of Hanchett Entry Systems, Inc. is prohibited. ESH-60-1019