



# Installation Instructions Slide Track Door Closers

Non Hold Open Models  
7700ST - 7500ST  
PS7700ST - PS7500ST

Hold Open Models\*  
7700ST-H - 7500ST-H  
PS7700ST-H - PS7500ST-H

## CAUTION

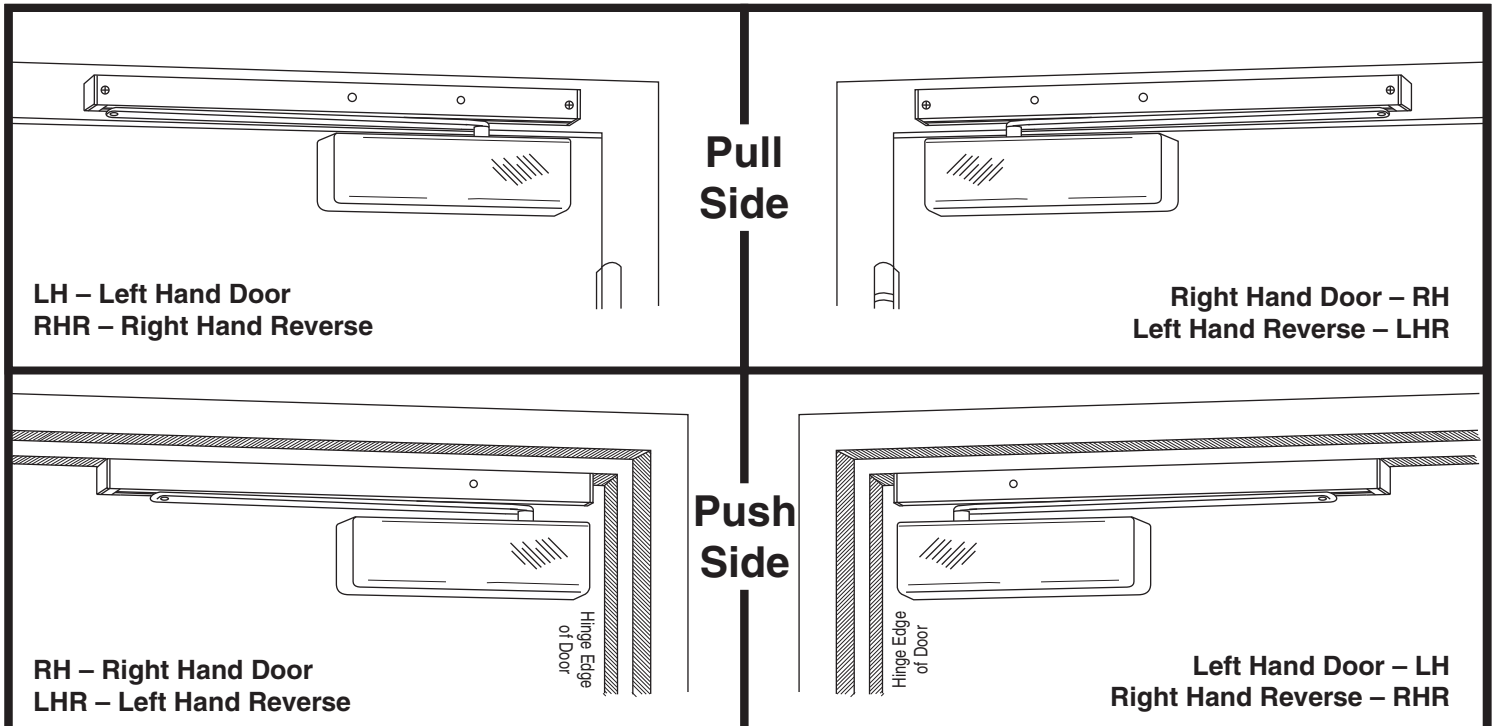
An incorrectly installed or improperly adjusted door closer can cause property damage or personal injury. These instructions should be followed to avoid the possibility of misapplication or misadjustment.

# ASSA ABLOY

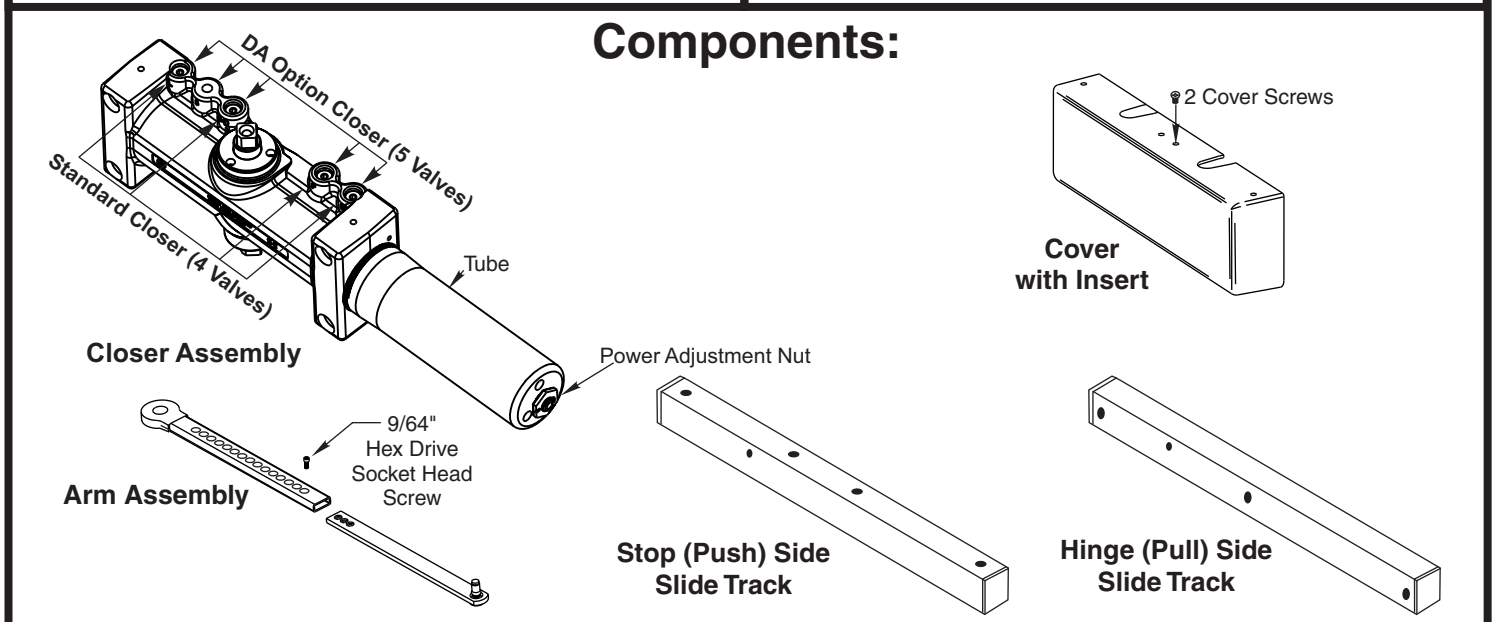
\* These units are not permitted to be installed in fire door assemblies.

NOTE: For special applications a separate door and frame preparation template is packed with these instructions. Use this instruction sheet for installation sequence and closer adjustments only.

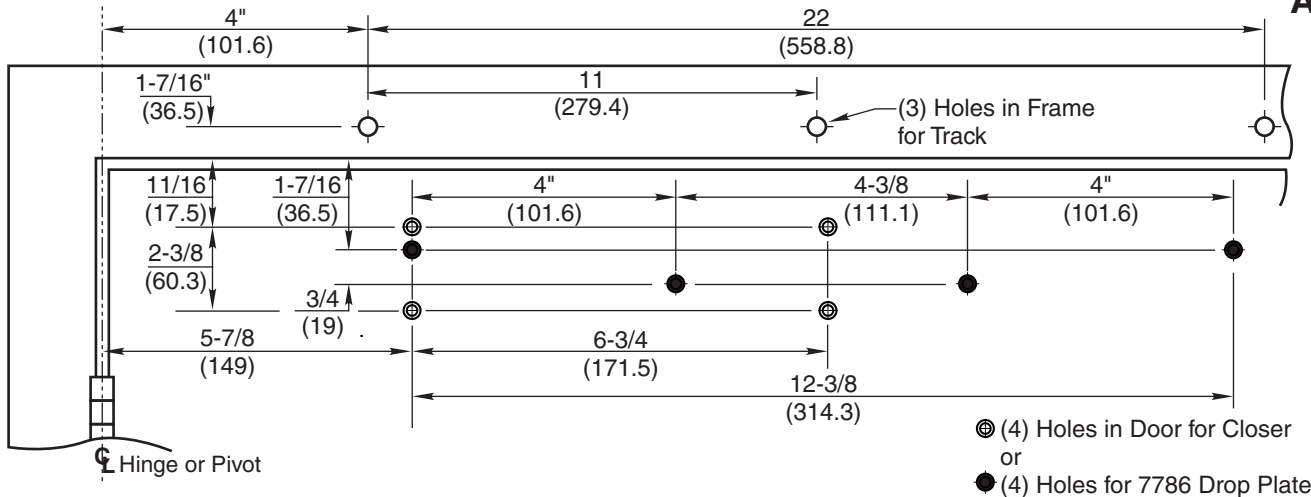
- For closers with or without **Delayed Action** closing feature suffix "DA"
- Use of an auxiliary door stop is always recommended.



## Components:



# Pull Side Application



- **IMPORTANT:** From centerline of pivot point to end of track is 26-1/2" (673mm)
- Right hand door shown
- Do not scale drawing
- Dimensions are given in inches (mm)
- Min. ceiling clearance for unit is 2" (50mm) from frame rabbet
- 110° Max. – Non Hold Open with Spring Buffer
- 180° Max. – Non Hold Open without Spring Buffer
- 110° Max. – Hold Open

## Installation Sequence:

1. Use template to locate holes on door and frame:  
4 on door for closer or drop plate.  
3 on frame face for track assembly.
2. Prepare door and frame for fasteners using chart on this page.

FOR 7500 SERIES MODELS ONLY set closer power for door size using chart below:

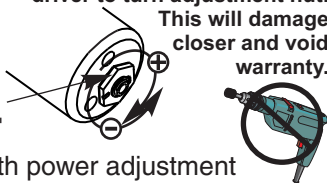
| Power Adjustment Chart                          |          |   |           |
|---|----------|---|-----------|
| Maximum Interior Door Size<br>inches / (meters) |          | Maximum Exterior Door Size<br>inches / (meters) |           |
| 30 / (.76)                                      | <b>0</b> | 30 / (.76)                                      | <b>2</b>  |
| 36 / (.91)                                      | <b>2</b> | 36 / (.91)                                      | <b>5</b>  |
| 42 / (1.07)                                     | <b>5</b> | 42 / (1.07)                                     | <b>8</b>  |
| 48 / (1.22)                                     | <b>8</b> | 48 / (1.22)                                     | <b>11</b> |

NOTE: Maximum of 16-1/2 turns (360°) of Power Adjustment Nut.

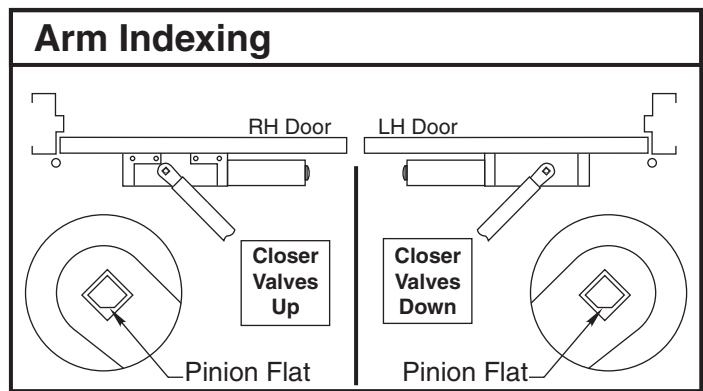
Install closer per instructions with the proper pre-load applied to the arm then adjust spring power. The power adjustment will not work properly if the closer spring is not pre-loaded. To increase power, use 11/16" wrench to turn power adjustment nut clockwise. To decrease power, turn nut counter clockwise.

**DO NOT** use a power drill or driver to turn adjustment nut. This will damage closer and void warranty.

"Spring Power Adjustment Nut"



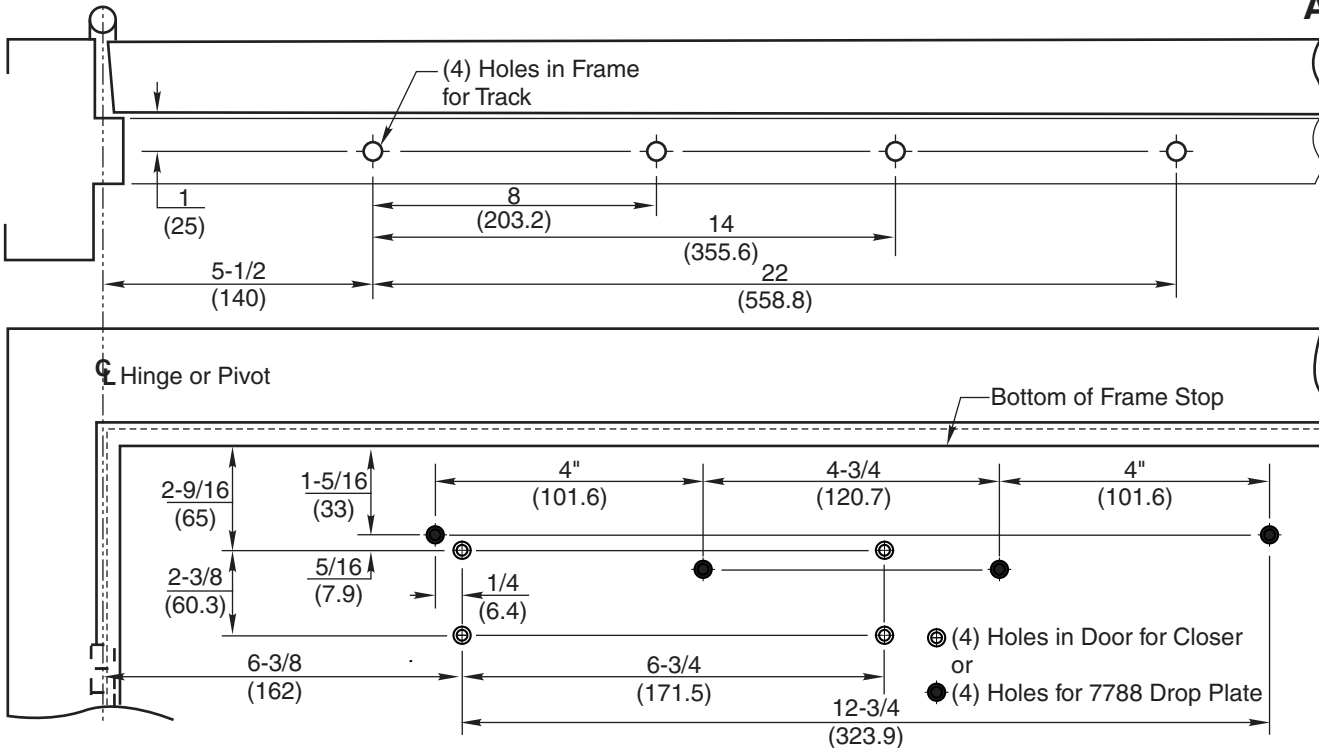
3. Fasten closer body to door with power adjustment nut toward lock edge of door and with valves UP for Right Hand door valves DOWN for Left Hand door
4. Fasten slide track to frame face with open side facing down and spring buffer end toward hinge edge of door.



| Preparation for Fasteners |                                |                  |  |
|---------------------------|--------------------------------|------------------|--|
|                           | Fasteners                      | Door or Frame    | Drill-Sizes  |
| Standard                  | #14 Type "A" SM Screw          | Wood             | 3/16" (4.30 mm) pilot hole required  |
|                           | 1/4" - 20 machine screw        | Metal            | Drill: #7 (0.201" dia.)<br>Tap: 1/4" - 20  |
| Optional                  | Sex nuts and bolts             | Hollow Metal     | 9/32" (7 mm) through;<br>3/8" (9.5 mm) door face opposite to closer                    |
|                           |                                | Aluminum or Wood | 3/8" (9.5 mm) through  |
|                           | Through-bolts and grommet-nuts | All              | 9/32" (7 mm);<br>3/8" (9.5 mm) dia. x<br>3/8" (9.5 mm) deep on door opposite to closer |

5. Adjust arm to shortest length and install 9/64" hex drive socket head screw from screw pack.
6. Place slide arm on pinion shaft using Arm Indexing instructions above.
7. Secure arm with arm washer and arm screw.
8. Insert arm stud into slide block in track assembly. Secure by pushing in on the retainer clip that extends from the slide block in the track, until it is flush with the slide block.
9. Adjust closer. (See Page 4)

# Push Side Application



- **IMPORTANT:** From centerline of pivot point to end of track is 28" (711mm).
- Left hand door shown
- Do not scale drawing
- Dimensions are given in inches (mm)
- Maximum door opening:
  - 100° Max. – Non Hold Open with Buffer in Track
  - 125° Max. – Non Hold Open without Buffer in Track, Auxiliary Door Stop Required
  - 100° Max. – Hold Open Track

## Installation Sequence:

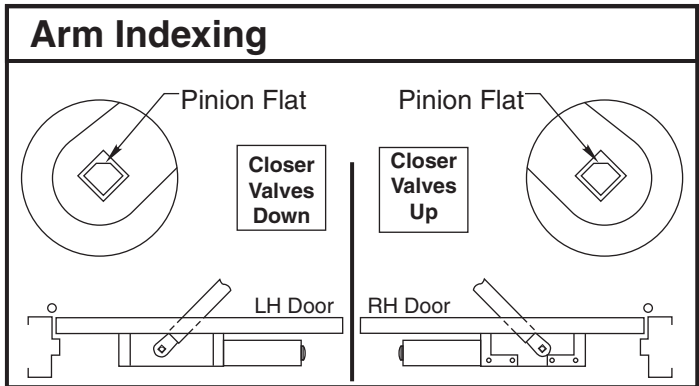
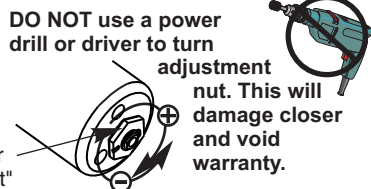
1. Use template to locate holes on door and frame:
  - 4 on door for closer or drop plate.
  - 4 on frame soffit for track assembly.
2. Prepare door and frame for fasteners using chart on Page 2.

FOR PS7500 SERIES MODELS ONLY set closer power for door size using chart below:

| Power Adjustment Chart                          |   |   |    |
|---|---|---|----|
| Maximum Interior Door Size<br>inches / (meters) |   | Maximum Exterior Door Size<br>inches / (meters) |    |
| 30 / (.76)                                      | 0 | 30 / (.76)                                      | 2  |
| 36 / (.91)                                      | 2 | 36 / (.91)                                      | 5  |
| 42 / (1.07)                                     | 5 | 42 / (1.07)                                     | 8  |
| 48 / (1.22)                                     | 8 | 48 / (1.22)                                     | 11 |

NOTE: Maximum of 16-1/2 turns (360°) of Power Adjustment Nut.

Install closer per instructions with the proper pre-load applied to the arm then adjust spring power. The power adjustment will not work properly if the closer spring is not pre-loaded. To increase power, use 11/16" wrench to turn power adjustment nut clockwise. To decrease power, turn nut counter clockwise.



3. Fasten closer body to door with power adjustment nut toward lock edge of door and with valves UP for Right Hand door valves DOWN for Left Hand door
4. Fasten slide track to frame soffit with open side facing down and spring buffer end toward hinge edge of door.
5. Adjust arm to shortest length and install 9/64" hex drive socket head screw from screw pack.
6. Place slide arm on pinion shaft using Arm Indexing instructions above.
7. Secure arm with arm washer and arm screw.
8. Insert arm stud into slide block in track assembly. Secure by pushing in on the retainer clip that extends from the slide block in the track, until it is flush with the slide block.
9. Adjust closer. (See Page 4)

# Adjustment Instructions

## Arm Attachment to Track

Insert arm stud into slide block in track. Secure by pushing in on the retainer clip that extends from the slide block, until it is flush with the slide block.

## Door Opening Angle and/or Hold Open Angle:

Remove 9/64" hex drive socket head screw from arm. Open door to desired angle and install hex-drive socket head screw into hole in adjusting rod that is aligned with the hole in the adjusting tube.

## Closing Power

7700ST Models come in three different sizes (4 thru 6), each power size can be increase by 50%.  
7500ST Models are fully adjustable for proper sizing. See chart on page 2 or 3.  
To adjust closer power - See Figure 1.

## Closing Cycle (hydraulic control)

### Standard Closer Only

See Figure 2a.  
Valve "L" controls door speed in Latch range.  
Valve "S/D" controls door speed in Sweep range.  
Adjust as shown in Figure 3.

### Delayed Action Closer Only

See Figure 2b.  
Valve "L" controls door speed in Latch range.  
Valve "S" controls door speed in Sweep range.  
Valve "S/D" controls door speed in Delay range.  
Adjust as shown in Figure 3.

## Opening Cycle (hydraulic control)

See Figure 4.  
Valve "B" cushions (slows) door opening in the backcheck range.  
Valve "P" allows "backcheck" to begin later in the opening cycle.  
Adjust as shown in Figure 4.

## On/Off Hold Open Feature:

Slotted screw, accessible thru hole in face of track, engages or disengages the hold open feature with 1/4 turn of the screw. Hold open units are not permitted in fire door assemblies.

## Hold Open Power Adjustment:

If more hold open power is required, the power may be increased by turning the adjustment screw in the end of the track nearest the hinges. Use 9/64" hex wrench provided and rotate adjustment screw clockwise to increase holding power.

## Installation of Cover:

Fasten cover to closer with two screws provided:  
• Cover fastens at the top of closer

## Closing Power Control

Figure 1

### Power Adjustment Chart

| Maximum Interior Door Size<br>inches / (meters) |   | Maximum Exterior Door Size<br>inches / (meters) |    |
|---|---|---|----|
| 30 / (.76)                                      | 0 | 30 / (.76)                                      | 2  |
| 36 / (.91)                                      | 2 | 36 / (.91)                                      | 5  |
| 42 / (1.07)                                     | 5 | 42 / (1.07)                                     | 8  |
| 48 / (1.22)                                     | 8 | 48 / (1.22)                                     | 11 |

NOTE: Maximum of 16-1/2 turns (360°) of Power Adjustment Nut.

Install closer per instructions with the proper pre-load applied to the arm then adjust spring power. The power adjustment will not work properly if the closer spring is not pre-loaded. To increase power, use 11/16" wrench to turn power adjustment nut clockwise. To decrease power, turn nut counter clockwise.

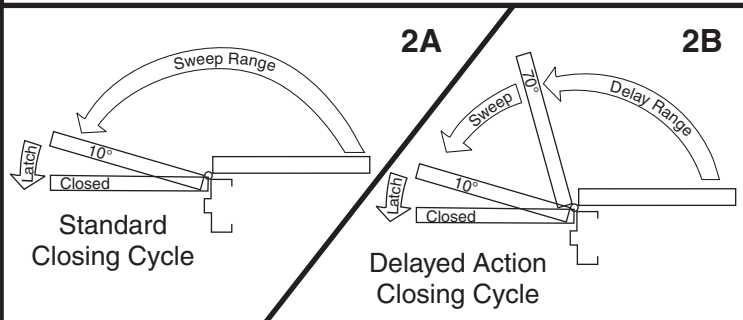
DO NOT use a power drill or driver to turn adjustment nut. This will damage closer and void warranty.

"Spring Power Adjustment Nut"



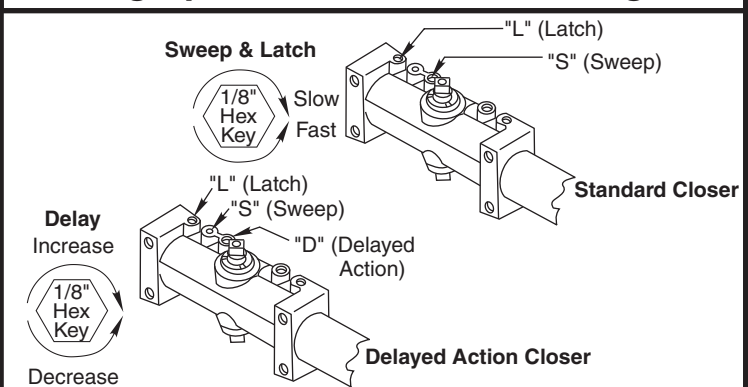
## Closing Cycle

Figure 2



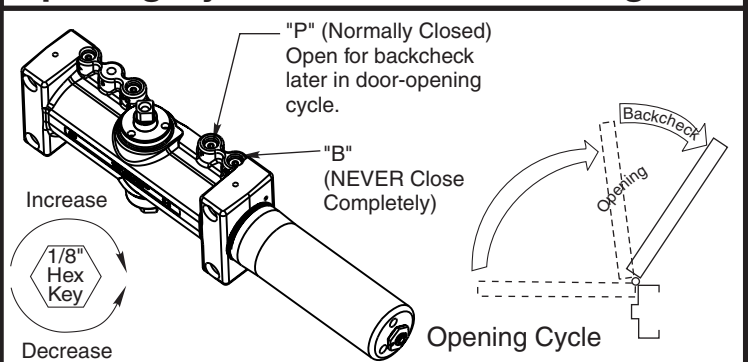
## Closing Speed Controls

Figure 3



## Opening Cycle

Figure 4



3000 Highway 74 East • Monroe, NC 28112  
Tel: (877)-974-2255 • Fax: (800)-338-0965  
www.nortondoortcontrols.com

ASSA ABLOY, the global leader in door opening solutions

80-9377-0510-020 (05-14)