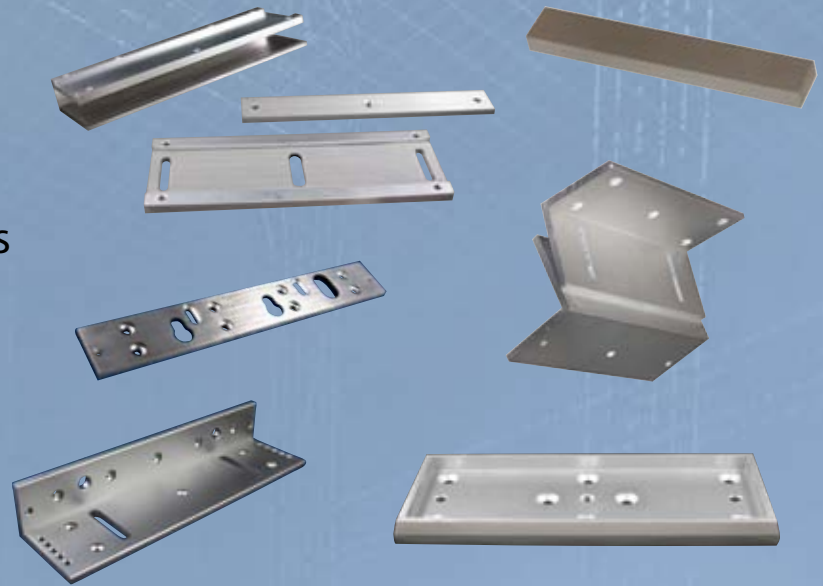


MAGLOCKS

BRACKETING ACCESSORIES



EN

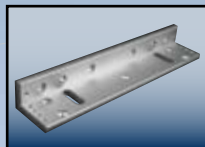


Maglocks for Most Applications

DESCRIPTION

BEA's **MAGLOCK ACCESSORIES** are designed for unique applications that include various door dimensions and sizes, glass doors, aesthetic and functional filler plate mounting options.

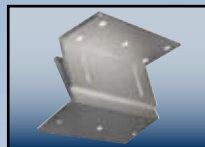
Maglock Accessory Product Family



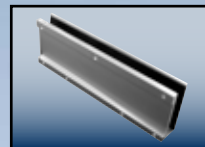
600LB L-BRACKET



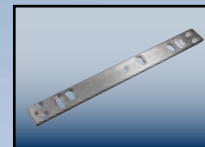
1200LB L-BRACKET



Z-BRACKETS



U-BRACKET



600LB MAGLOCK VERTICAL SPACER



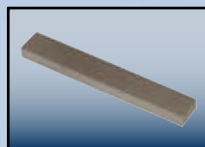
1200LB MAGLOCK VERTICAL SPACER



600LB MAGLOCK ARMATURE HOUSING

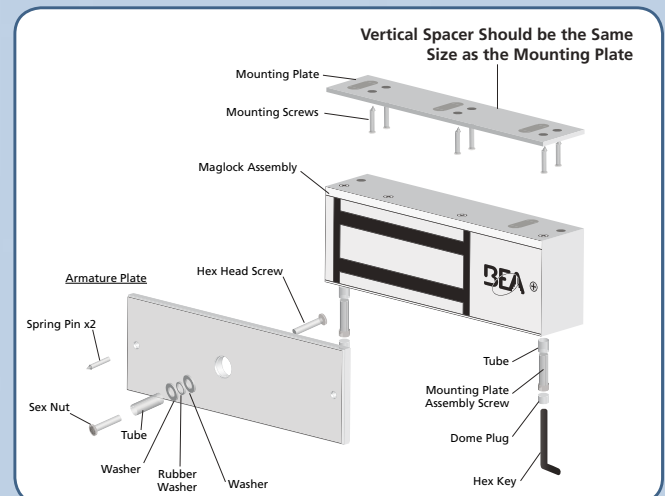


1200LB MAGLOCK ARMATURE HOUSING



FILLER BAR

Installation Example



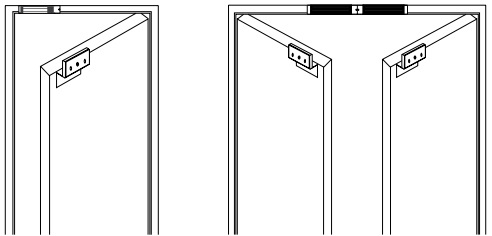
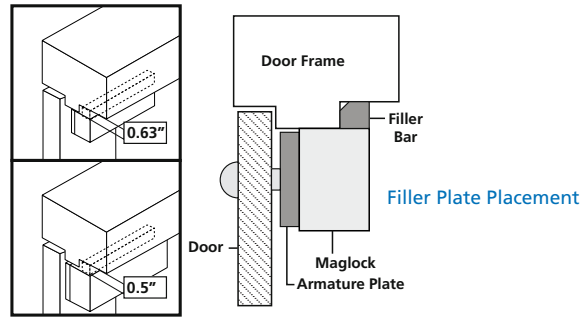
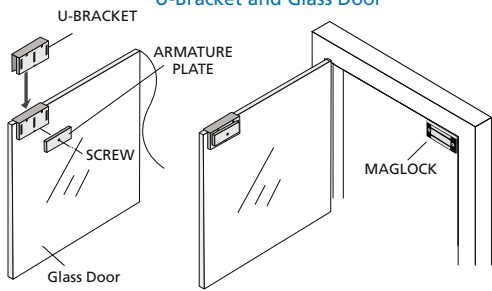
FEATURES

- L & Z brackets for use on in-swinging doors allowing for precision adjustments
- U Brackets provide necessary hardware for mounting Maglock armature to a solid glass door up to a 1/2" thick
- Vertical spacer allows the Maglock to be moved vertically on the door frame
- Armature Housings increase overall reliability of the installation while providing an aesthetically pleasing mounting option
- Filler bars are used to extend the door stop and creates a flat mounting surface for the Maglock

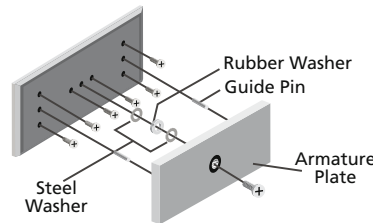


APPLICATIONS

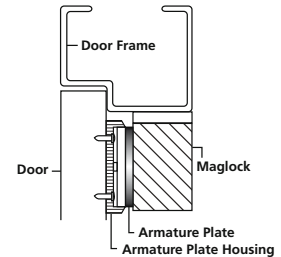
U-Bracket and Glass Door



L & Z Brackets Mounted on Swinging Doors



Armature Plate Assembly



Armature Plate Assembly



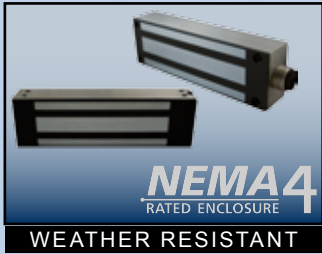
UL LISTED



NON-UL LISTED



DELAYED EGRESS KIT



NEMA 4
RATED ENCLOSURE

WEATHER RESISTANT

RELATED PRODUCTS

TECHNICAL SPECIFICATIONS

Filler Bars

UL Listed Sizes	1/2", 3/4"
Non-UL Listed Sizes	1/4", 3/8", 1/2", 5/8"

L-Brackets (UL & Non-UL Listed)

600lb Dimensions	9-7/8" x 1-7/8" x 1-7/8"
1200lb Dimensions	10-1/2" x 1-1/2" x 3"

Z-Brackets (UL & Non-UL Listed)

600lb Dimensions	7-1/4" x 2" x 4"
1200lb Dimensions	7-7/8" x 2-1/2" x 5"

U-Bracket (UL Listed)

Dimensions	7-7/8" x 2-1/2" x 1-7/8"
Glass Thickness	Up to 1/2" Maximum
Material & Finish	Anodized Aluminum

Note: Compatible with Non-UL Maglocks

Vertical Spacer (UL Listed)

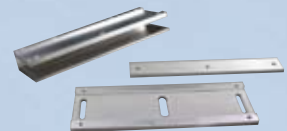
Compatibility	600lb; 1200lb – Note: Two (2) vertical spacers are required for all Double Maglocks
Note	Not Compatible with Non-UL Maglocks

Armature Plate Housing (UL Listed)

600lb Dimensions	7-7/8" x 2-1/8" x 5/8"
1200lb Dimensions	7-7/8" x 3" x 5/8"
Note	Not Compatible with Non-UL Maglocks

Specifications are subject to change without prior notice.

DISCLAIMER This document as well as all other enclosed documents (quotation / specification / other) are provided "as is" without warranties of any kind, either expressed or implied, including but not limited to the implied warranties of merchantability, fitness for a particular purpose, or non-infringement. / Information is supplied upon the condition that the persons receiving it will make their own determination as to its suitability for their purposes prior to use. In no event will BEA be responsible for damages of any nature whatsoever resulting from the use of or reliance upon information from this document or the products to which the information refers. / BEA has the right without liability to change descriptions and specifications at any time. / Prices, shipping and availability are subject to change without prior notice.



WWW.BEASECURITY.COM

MAGLOCKS BRACKETING ACCESSORIES

79.0003.02 20130503

A HALMA COMPANY

BEA Inc.
RIDC Park West
100 Enterprise Drive
Pittsburgh, PA 15275-1213

PHONE: 1 800.523.2462
FAX: 1 888.523.2462

Members of:



Member Association of Automatic Door Manufacturers (AADM)

