



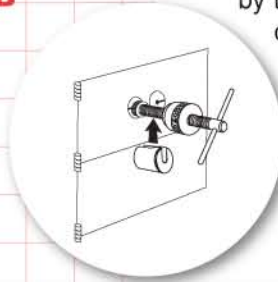
Lock Defeaters

Safe Deposit Box Nose Puller Set



Safe Deposit Box Nose Puller
No. NP-4B

This heavy wrought iron and bar steel **Safe Deposit Box Nose Puller Set** is expertly machined and finished to effectively pull out a lock core from a safe deposit door. Simply turn the screw into the center of the core's keyway to act as an anchor. Then slip the spacer block into place and tighten by turning the knurled knob. Continue turning clockwise, slowly and gradually until the entire core is drawn out. Then use the guard key and disengage the bolt. If the door does not open, then it becomes necessary to use the Door Puller device (No. DP-7B). The Nose Puller can also be used for removing the plug from a padlock. It comes packed in a sturdy case.

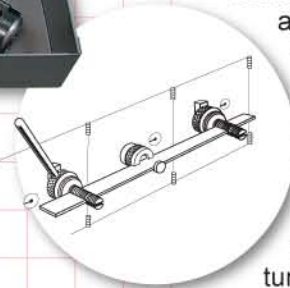


Safe Deposit Box Door and Nose Puller Set

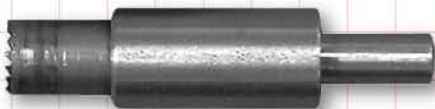


Safe Deposit Box Door and Nose Puller
No. DP-7B
Includes Nose Puller Set
(No. NP-4B)

If the lock core has been pulled and use of the guard key has not opened the door, then it is time to apply the **Safe Deposit Box Door and Nose Puller Set**. Place the stepped spacer lock onto the hook unit. The 3 different diametered steps of .345" (2.15cm), .562" (1.43cm) and .680" (1.73cm) make it adaptable to 3 different sizes of plug holes. Place the correct diameter step into the hole. Have the hook end set against the inside back wall of the door, then tighten the knurled nut to hold the hook in place. The flat surface on the outside of the hook unit should be in a level position. The long flat blade is then fitted onto the holding slot, along with the remainder of the puller unit, as shown. Position the feet away from the centers of adjacent doors to minimize the possibility of distortion. The knurled knob is then turned until the door is pulled out.



Tubular Lock Saws



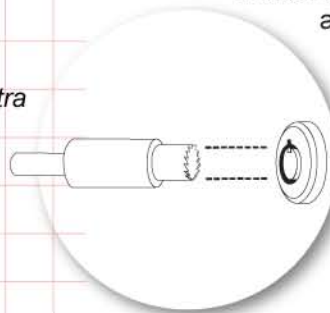
No. AG-1
Standard Sized Tool and Extra
Saw for .375" (9.53mm) dia.



No. AG-2
Oversized Tool and Extra
Saw for .394" (10mm) dia.



If picking is not possible, lock-outs of tubular locks can still be serviced. HPC's **Tubular Lock Saws** destroy the pins at the shear line. Hole saws are available for standard and oversized keyways. Saws will fit any 1/4" (6.35mm) electric drill. Saw life is approximately 3 openings. They are not for use on locks with hardened pins or ball bearings in the keyway.



No. G-1
Saw Only for No. AG-1

No. G-2
Saw Only for No. AG-2