

Options

- ATS** ANTI-TAMPER SWITCH - Signals removal of the housing cover. SPDT contacts.
- ATS2** ANTI-TAMPER SWITCH - For 3121C models.
- BPM** BYPASS MONITOR - Signals bypass keyswitch activation.
- DSM** DOOR STATUS SWITCH - Signals door closed or ajar.
- DSM2** DOOR STATUS SWITCH - For 3121C models.
- DYN** DYNASTAT FORCE SENSOR - Indicates efficient magnetic bond. SPDT contacts.
- DYN2** DYNASTAT FORCE SENSOR - For 3121C models.
- ETR** EGRESS SENSOR OMITTED - For externally triggered egress.
- KSO** KEYSWITCH OMITTED - In favor of separate remote keyswitch.
- LP** LOW POWER COIL - 12V only @ 0.40 Amps (Single coil)
- LP2** LOW POWER COIL - 12V only @ 0.72 Amps (Double coil)
- SF** SPECIAL FINISH - Standard finish US28 Satin Aluminum. See price book.

Building Code Software Options

*** Consult factory for special software/sequencing requirements.

Specifications

MECHANICAL

Holding Force: 1500 Lbs. Each Coil

Lock Size:

3101C	3"D x 2 ³ / ₄ "H x 11"L
3121C	3"D x 2 ³ / ₄ "H x 22"L
3121C2	3"D x 2 ³ / ₄ "H x 11"L Each

Armature Size: 1/2"D x 2⁵/₁₆"H x 7³/₈"L

Lock Weight: 3101C 11.5Lbs. / 3121C 23Lbs.

Finish: US28 Satin Aluminum with clear anodize.
Other Finishes Available.

ELECTRICAL

Input Voltage: 12 or 24 VDC/VAC (Auto-Sensing)

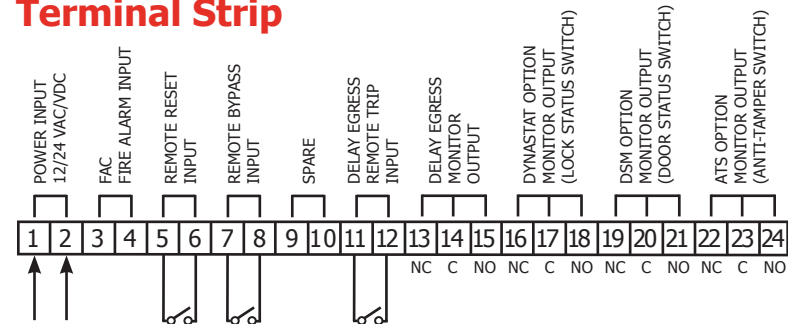
Current Draw:

453mA / 839mA @ 12VDC (Single/Double)
1.08A / 1.79A @ 12VAC (Single/Double)
254mA / 470mA @ 24VDC (Single/Double)
750mA / 1.27A @ 24VAC (Single/Double)

Contact Ratings:

DSM - 0.5A @ 24VDC/VAC
DYN - 1A @ 24VDC/120VAC
ATS - 0.25A @ 175VDC
Delay Monitor - 1A @ 24VDC/120VAC
Bypass Monitor - 4A @ 125VDC/VAC

Terminal Strip



Accessories

- 4000 Series:** Filler Plates / Angle Brackets
- 5000 Series:** Power Supplies
- 6000 Series:** Push-buttons / Exit Controls
- 7000 Series:** Keyswitches / Keypads
- 8000 Series:** Consoles / Custom or Standard

3101C Series Delay Egress System* Magnetic Lock



- **Prevent Unauthorized Exits**
- **Completely Self Contained**
- **Auto-Sensing 12/24 VDC/VAC Input**
- **Unique Sensor Unaffected by Minor Door Misalignment**
- **Lifetime Warranty**

*Conforms to NFPA101 Life Safety Code



Description

The 3101C Series is designed to satisfy egress codes and high security needs at the same time. The next-generation 3101C system integrates totally-redesigned and updated electronics with DynaLock's proven and forgiving egress-sensing technology.

In a typical installation, the door is normally closed and latched by the existing mechanical door hardware and magnetically secured by the 3101C Lock. Attempting to exit by unlatching and pushing on the door will activate the 3101C delay egress timer. The audible and red LED will pulsate for 15 seconds (30 seconds field selectable). After the time delay has elapsed, the lock will release and the audible will sound continuously with a green LED, until the door is shut and the lock is reset. Reset and/or bypass are accomplished with a built-in keyswitch or remote signal. The system unlocks automatically when the 3101C is integrated with the building emergency fire alarm system or power is removed. Fire alarm contacts on the 3101C Lock are field selectable for NO and NC signals.

Standard Features

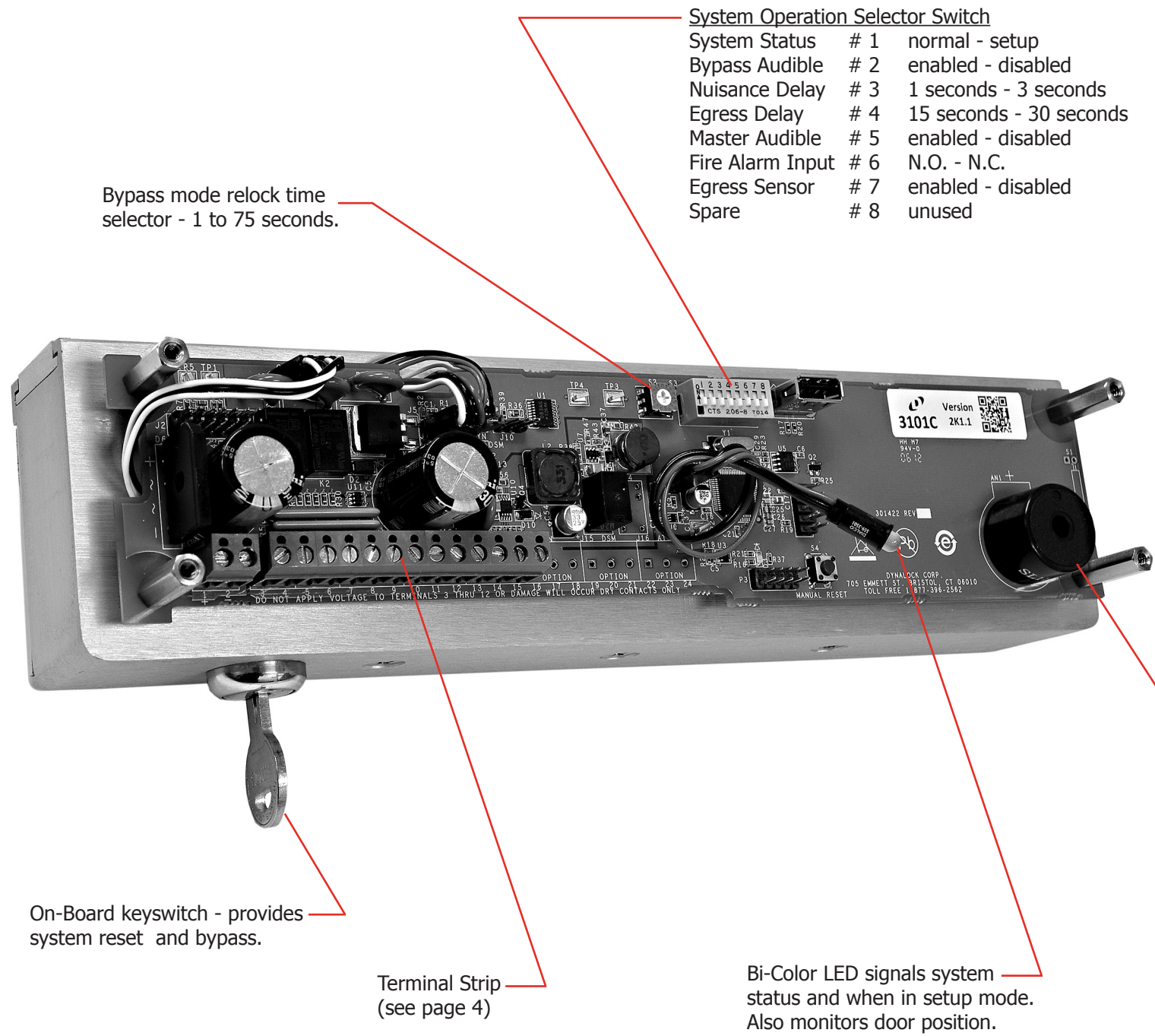
- **Microprocessor Controlled:** An advanced digital processor manages all lock functions, without the need for an external system controller. Custom factory programs are available to meet varying job requirements and local building codes.
- **Low Installation Cost:** The user-friendly, micrometer style adjustment wheel simplifies calibration of delay egress sensor and works with existing door hardware. Does not require touch or electrified exit devices, electric hinges, door cords or special power supplies.
- **Auto-Sensing Power Input:** 12 or 24 VDC/VAC
- **Selectable Nuisance Delay:** 1 or 3 second to deter false alarms.
- **Opto-Electronic System Sensor:** Featuring a concealed optical sensor unaffected by wind, warpage or door sag.
- **Holding Force:** 1500 Lbs. high security holding force (holding force not evaluated by UL) effectively deters forced access or egress.
- **Lifetime Warranty** - American Made in the USA by DynaLock, with over 20 years experience in the manufacture of electromagnetic locks.

DYNALOCK CORPORATION
705 EMMETT STREET / PO BOX 2728
BRISTOL, CT 06011-2728
PHONE: 877-DYNALOCK / FAX: 860-585-0338
E-MAIL: INFO@DYNALOCK.COM
WEBSITE: WWW.DYNALOCK.COM



LIFE SAFETY PRODUCTS
FULLY INTEGRATED SECURITY SYSTEMS
Electromagnetic Locks | Controls | Power Supplies

3101C Series Delay Egress System



System Operation Selector Switch

System Status	# 1	normal - setup
Bypass Audible	# 2	enabled - disabled
Nuisance Delay	# 3	1 seconds - 3 seconds
Egress Delay	# 4	15 seconds - 30 seconds
Master Audible	# 5	enabled - disabled
Fire Alarm Input	# 6	N.O. - N.C.
Egress Sensor	# 7	enabled - disabled
Spare	# 8	unused

Bypass mode relock time selector - 1 to 75 seconds.

On-Board keyswitch - provides system reset and bypass.

Terminal Strip (see page 4)

Bi-Color LED signals system status and when in setup mode. Also monitors door position.



Audible 87db at 30cm pulses once per second with LED during exit attempt. Sounds continuously after delay sequence, shunts when system resets.

Model Selection

3101C Single Outswinging Door
Single coil. Mounts to the underside of the frame header.



3121C Double Outswinging Door
No Center Mullion. Double coil. Mounts to the underside of the frame header. Master/slave configuration.



3121C2 Double Outswinging Door
With Center Mullion. Double coil. Mounts to the underside of the frame header. Master/slave configuration.

