



ALARM LOCK

345 Bayview Avenue
Amityville, New York 11701
For Sales and Repairs 1-800-ALA-LOCK
For Technical Service 1-800-645-9440

© ALARM LOCK 2003

CYLINDER ADAPTER KIT

ADDENDUM

WI 1177 1/03

CAUTION

PROPER ALIGNMENT OF GEARS IS CRITICAL!

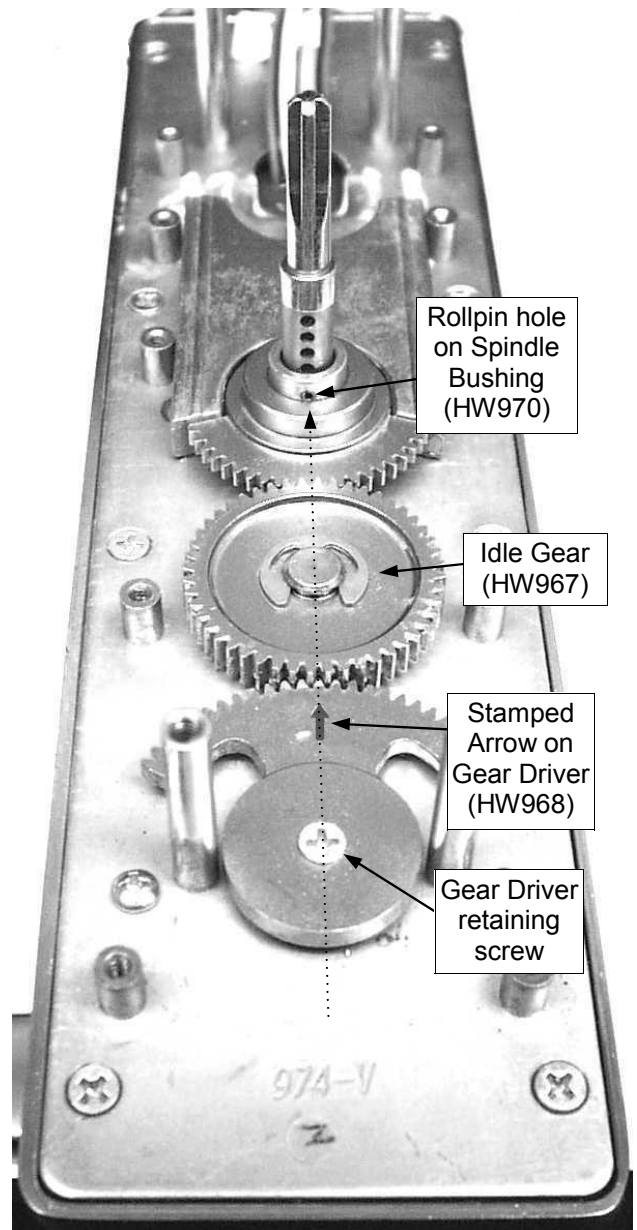
FAILURE TO ALIGN GEARS PROPERLY WILL CAUSE LOCK TO MALFUNCTION.

Note: See the illustrated instructions, WI 1163, "How to Replace Cylinder" for detailed replacement procedures. After inserting the new cylinder and Slide Plate, and before replacing the Cover Plate (step 16), align the gears as follows:

The rollpin hole located on the Spindle Bushing (HW970) must be aligned with the stamped arrow on the Gear Driver (HW968). Using a straight edge (or for convenience you can use the Cover Plate HW1016 instead of a straight edge) align the gears as shown in the illustration at right:

Place one end of the straight edge directly over the center retaining screw of the Gear Driver. Align the other end of the straight edge with the rollpin hole. The stamped arrow (↑) on the Gear Driver **must** be directly underneath the straight edge when aligned with the rollpin hole.

If the arrow is not aligned, **loosen** the Gear Driver retaining screw, lift the Gear Driver. The Slide Plate springs will cause the Spindle Bushing to self-align (if the Slide Plate is installed properly). Re-position the Gear Driver until the arrow is aligned with the rollpin hole. Tighten the Gear Driver Retaining screw, and Replace the Cover Plate and Frame Spacer as per the directions in WI 1163.





ALARM LOCK

345 Bayview Avenue, Amityville, New York 11701
 For Sales and Repairs 1-800-ALA-LOCK
 For Technical Service 1-800-645-9440
 or visit us at <http://tech.napcosecurity.com/>

(Note: Technical Service is for security professionals only)
 Publicly traded on NASDAQ Symbol: NSSC

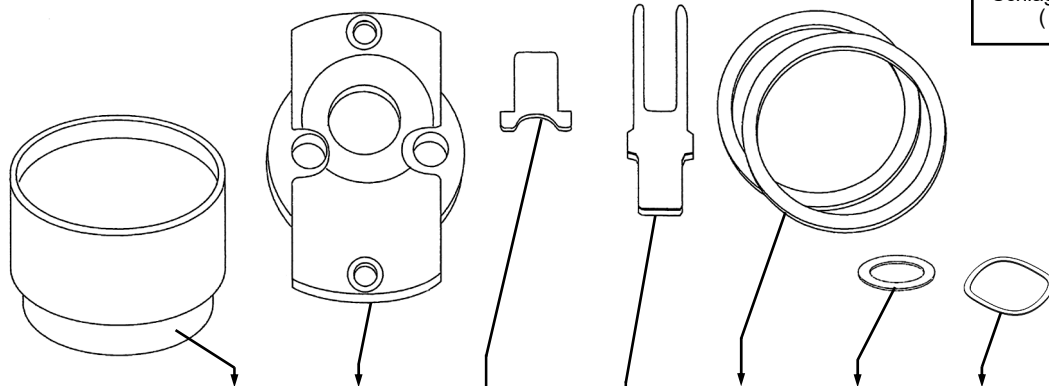
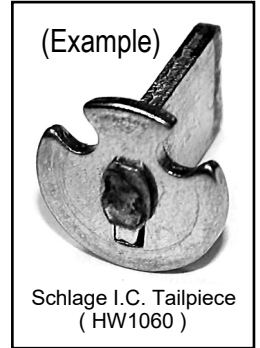
© ALARM LOCK 2019

Cylinder Adapter Kits Installation Guide

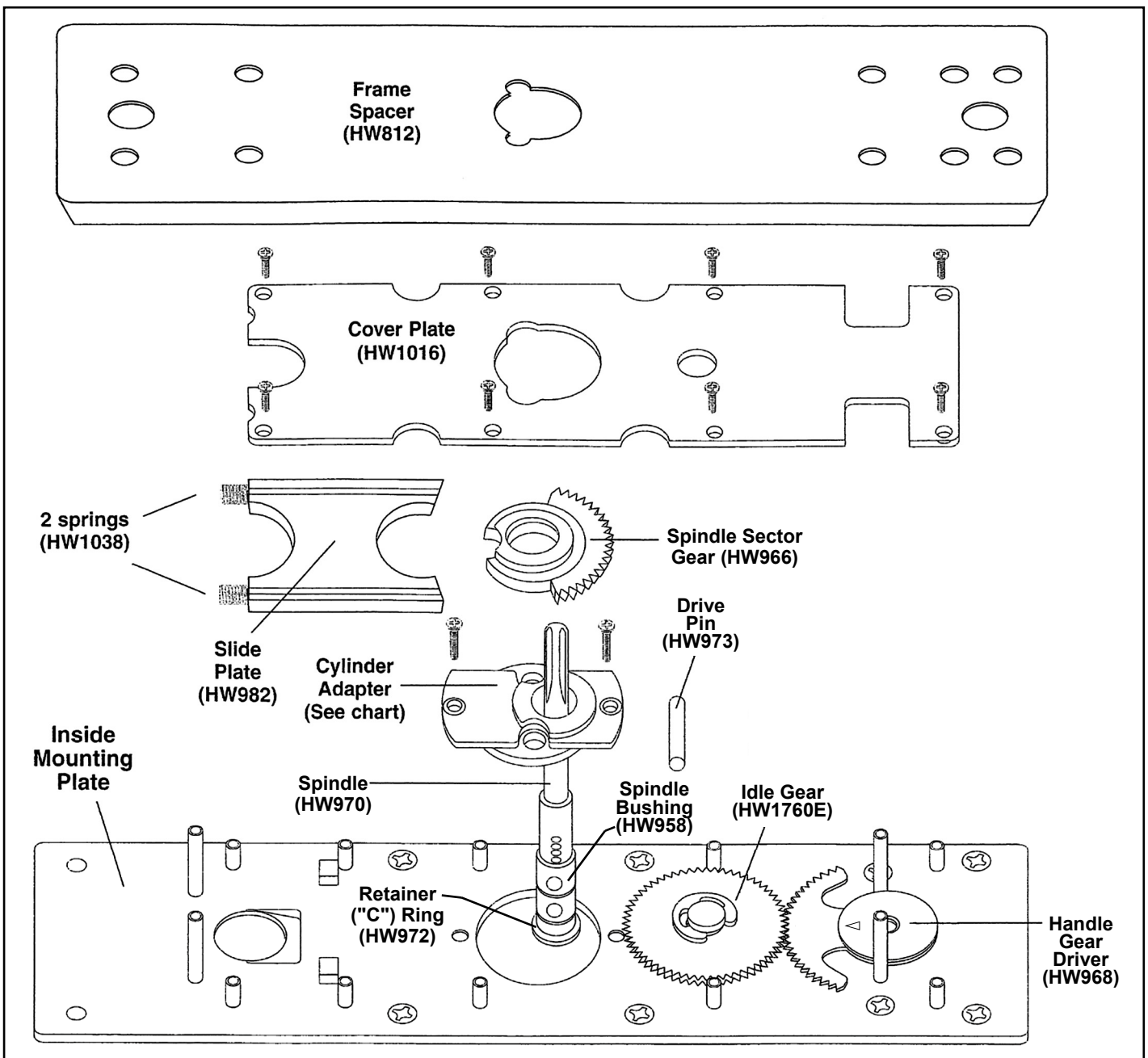
WI1163FLF 10/19

To replace a specific cylinder, a specific *Cylinder Adapter Kit* is required. The kit includes: Cylinder Collars, Cylinder Adapter, IC or Standard Tailpiece, Plastic Rings, mounting screws, Washer and Wave Washer. **Kit does NOT include the cylinder.** **Note:** When ordering kit, specify the finish at the end of the Part #. For example, **ET-ARIC/US3**.

ATTENTION: WHEN INSTALLING THE ADAPTER KIT, BE SURE TO REPLACE THE ORIGINAL TAILPIECE WITH THE TAILPIECE INCLUDED IN THE KIT. IN ADDITION, BE SURE TO REPLACE ANY GREASE THAT WAS REMOVED DURING THE INSTALLATION.



Kit Description	Part #	Cylinder Collar(s)	Cylinder Adapter	Tailpiece		Plastic Rings	Washer	Wave Washer
				Std	IC			
Arrow 6 & 7 pin I.C.	ET-ARIC	HW1098 HW1077	HW1066	--	HW1062	HW1099	--	WA200
Arrow Standard	ET-AR	HW980	HW1066	HW1053	--	HW1099	--	WA200
Assa Standard	ET-AS	HW980	HW1069	HW1054	--	HW1099	--	WA200
Alarm Lock Standard	ET-AL	HW980	HW1007	HW971	--	HW573	--	WA200
BEST 6 & 7 PIN I.C.	ET-BIC	HW1098 HW1077	HW1065	--	HW1062	HW1099	--	WA200
Corbin I.C.	ET-CIC	HW980	HW1067	--	HW1061	HW1099	--	WA200
Corbin Standard	ET-C	HW1077	HW1067	HW1055	--	--	--	WA200
Medico 6 & 7 Pin I.C.	ET-MIC	HW1051	HW1063	--	HW971	HW1099	WA171	WA200
Medico Standard	ET-M	HW1051	HW1069	HW1056	--	HW1099	--	WA200
Sargent I.C. Small / Large Format Core	ET-RIC	HW2145 HW1051	HW1066	--	HW1080	HW1099	--	WA200
Sargent Standard	ET-R	HW980	HW1066	HW971	--	HW1099	--	WA200
Schlage I.C.	ET-SIC	HW1098	HW1063	--	HW1060 (see image above)	HW1099	HW830	WA200
Schlage Standard	ET-S	HW980	HW1007	HW1057	--	--	--	WA200
Yale 6 & 7 Pin I.C.	ET-YIC	HW1098 HW1151	HW1063	--	HW1059	HW573	WA160	WA200
Yale Standard	ET-Y	HW1077	HW1063	HW1058	--	--	--	WA200

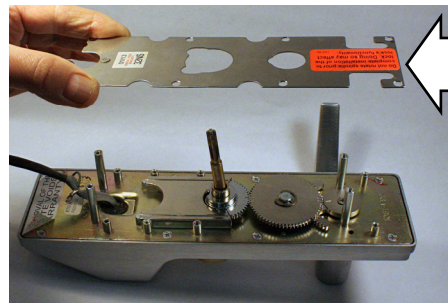
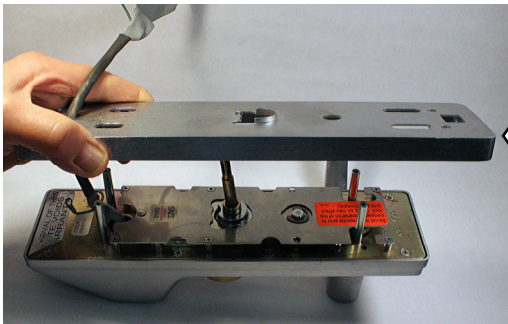


EXPLODED VIEW OF INTERNAL LOCK COMPONENTS*

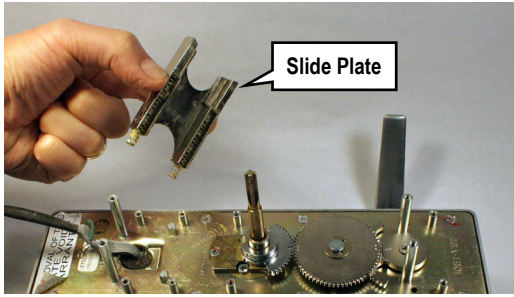
*Alarm Lock Limited Warranty is printed in the original installation instructions (available for download at <http://tech.napcosecurity.com/>)

TO REPLACE THE CYLINDER ADAPTER:

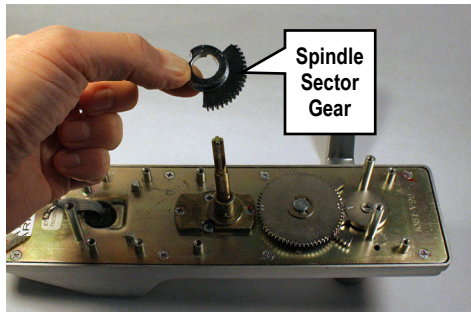
1. Remove the **Frame Spacer**.
2. Remove screws necessary to unfasten and remove the **Cover Plate**.



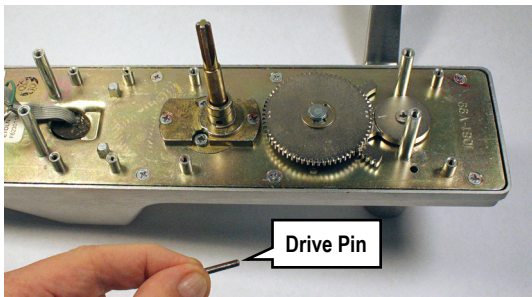
- Remove **Slide Plate** (Careful! 2 springs may pop out).



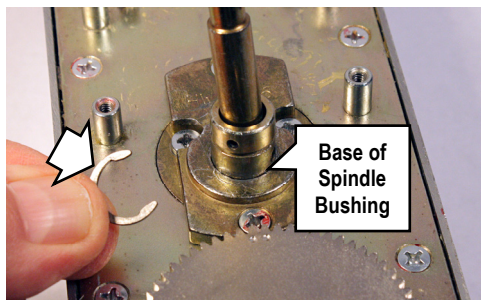
- Use screwdriver to carefully pry up and remove **Spindle Sector Gear**.



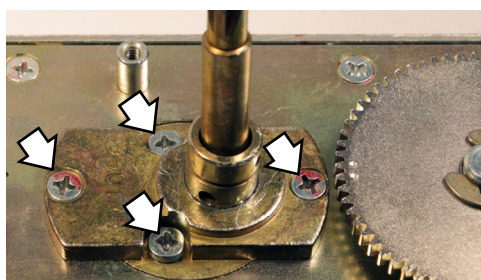
- Remove **Drive Pin** from **Spindle Bushing**.



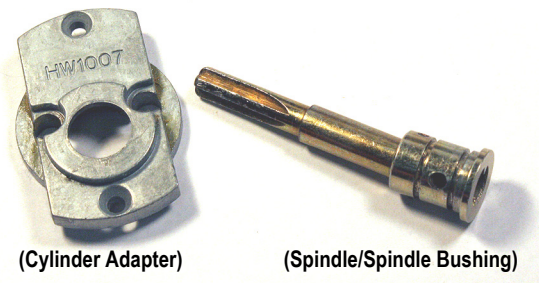
- Remove the "C" Retainer Ring from the base of the **Spindle Bushing**.



- Remove four screws: Two screws to disengage the **Cylinder Adapter**, and two screws to detach the factory cylinder.



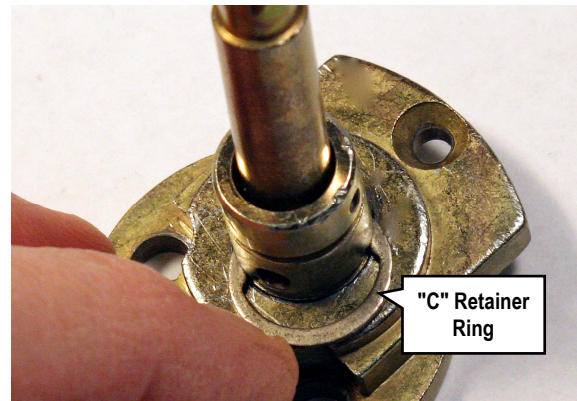
- Push the **Spindle/Spindle Bushing** assembly out of the factory **Cylinder Adapter** to separate.



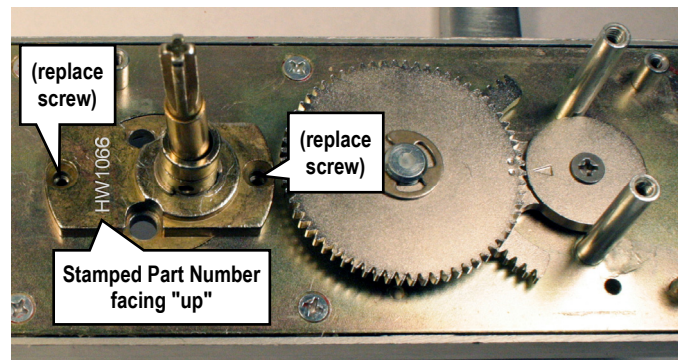
Set aside the factory **Cylinder Adapter**, factory **Cylinder Collar** and the factory cylinder. Install the new cylinder using all necessary parts included in the *Cylinder Adapter Kit* (see chart on page 1), as follows:

New Cylinder Installation

- Insert the **Spindle/Spindle Bushing** assembly into the bottom of the new **Cylinder Adapter**. Re-install the "C" Retainer Ring into the base of the **Spindle Bushing** to secure.



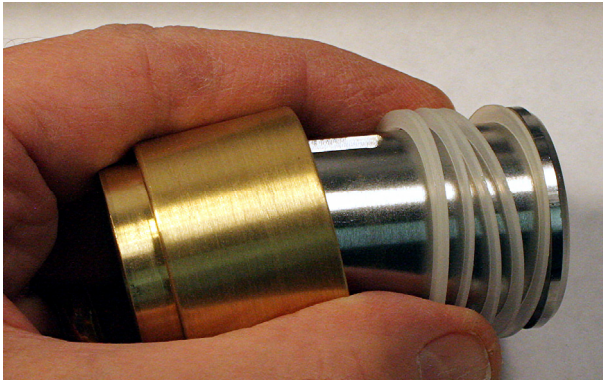
- Position the **Cylinder Adapter** with its stamped part number facing "up" towards the top of the lock. Secure with its two small screws removed previously.



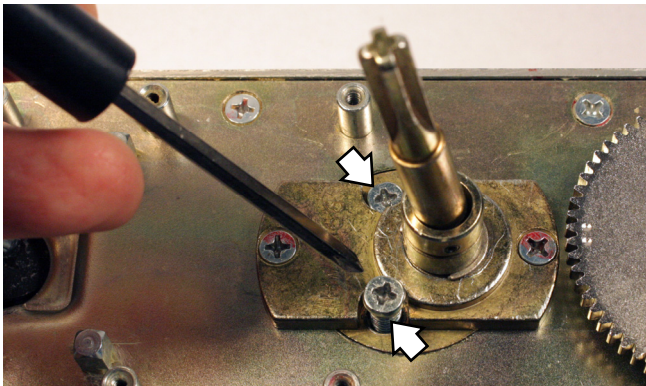
Hint: Before re-installing the **Drive Pin**, prepare and install the new cylinder.

- Prepare the new cylinder:** Insert the new cylinder into the new **Cylinder Collar**, using as many **Plastic Rings** as necessary to ensure that the face of the cylinder is flush with (or

slightly below) the **Cylinder Collar**.
 Install the new tailpiece, if needed (see chart).
 (IC core shown)

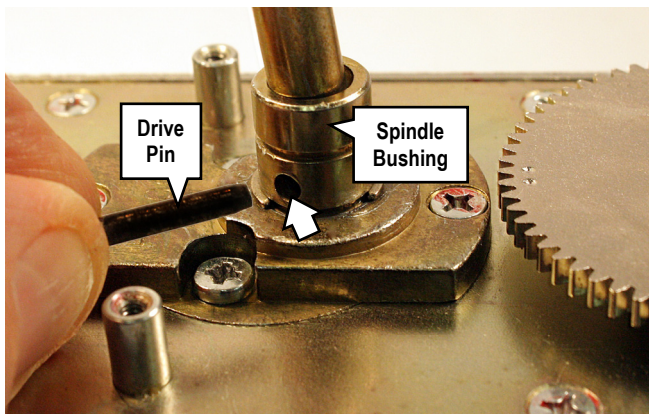


Install this cylinder assembly into the front of the lock and secure with its two screws (shown below).



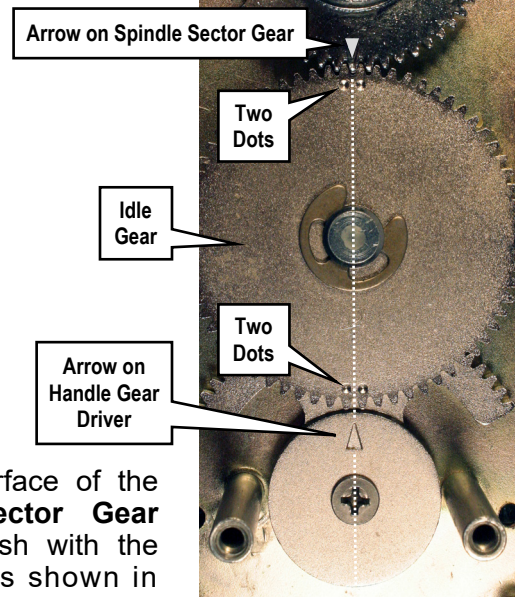
Note: Remember, the **Cylinder Collar** should be snug, *but remain free to turn* (its ability to turn is a security feature). If necessary, use a **Wave Washer** to ensure the **Cylinder Collar** is not wobbly or rattling.

11. Re-install the **Drive Pin** into the **Spindle Bushing**.

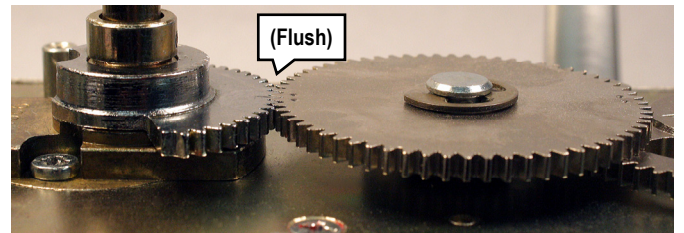


12. Before installing the **Spindle Sector Gear**, be sure the two dots on the **Idle Gear** and the arrow on the **Handle Gear Driver** are precisely aligned as shown in the photo shown below. If mis-aligned, simply remove the "C" retainer ring on the **Idle Gear** and re-align the gear teeth.

Re-install the **Spindle Sector Gear**. The gear tooth with the arrow must be placed between the two dots on the **Idle Gear**. The arrows and dots on all gears must align as shown at right.

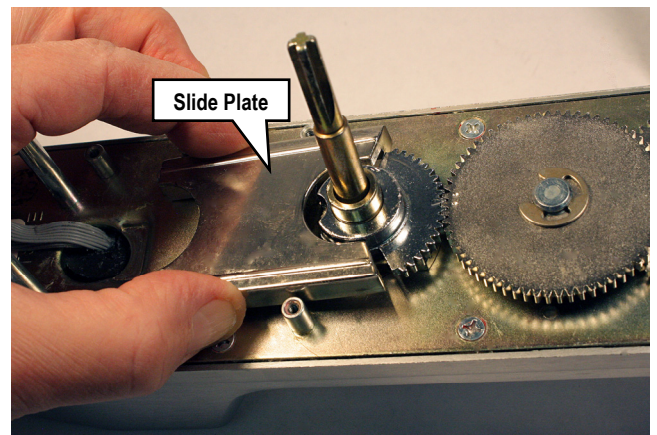


The top surface of the **Spindle Sector Gear** must sit flush with the **Idle Gear** as shown in the next image.



After the gear teeth are aligned and meshed, gently tap with a small hammer, if necessary, until flush.

13. Re-install the **Slide Plate** (with its 2 springs).



14. Re-install and secure the **Cover Plate** and the **Frame Spacer** (see exploded view illustration and steps 2 and 1) using the screws removed earlier.